




BROWNING
The Best There Is

2005



 **NEW**
CYNERGY

Cynergy Composite Black Ice



B R O W N I N G A P A S S I O N

Your first gun is like a first romance, unforgettable! Mine was a .22 one-shot rifle from the Herstal National War Weapons Factory which had yet to be known simply as "FN". With my gun loaded I will never forget those first feelings of excitement, of adrenaline, of passion as I lay in wait for the quarry to come in to range.

I discovered the BROWNING/FN association a few years later. Whilst Partridge shooting I had been so impressed by the shooting skills and wonderful clean kills of my Shooting companion who had chosen to use his "Auto 5" a gun he simply referred to as his BROWNING. Initially I attended the clay shooting grounds as a spectator; I soon noticed that the "crack shots" were most often using a BROWNING over and under shotgun. From then on, I was utterly convinced that it was the brand of choice for the top shooters.

I've always had a keenness for semi-automatics, they tend to suit me best because they require a little more care and attention which involves you more, giving extra time and handling pleasure.

I'm lucky enough to have a really keen and supportive gun dealer, thanks to whom I've got a small "harem" of BROWNING Semi-Automatics! Each of which has its favourite quarry, the one whose best shots remain engraved on my memory for all time.

- The "Double Automatic", is without a doubt my favourite, its appearance has an elegance I love. It is my constant companion for my rabbit shooting trips. Whether success is great or small it never lets me down.

- The super light "Auto 5". For me, it is one the best "autos", it is the most accomplished model in the range with regard to the weight, balance and ease of aim. I can still hear that "splash" as

my first shot Mallard falls into the water during a Wildfowling trip. Ever since it has been my "Duck" gun, even though I often take it with me when I go rough shooting.

- The "A500". This one is especially good whilst decoying pigeon under the broad leaved Oaks. Sometime I'm tempted to take another, but I always seem to return to her with complete trust as she has proved her worth as time and time again I have enjoyed success.

- The "B2000" is the gun I sometime use instead. Why? Because on December 10th 1994, it helped me put 5 consecutive left and rights on the "Woodies" into my game bag without missing a shot! Including one unforgettably acrobatic double! Ever since, whenever I use it I hope to relive the experience!

- The super light 20 gauge "Auto 5". Marvellously light and easy to handle,

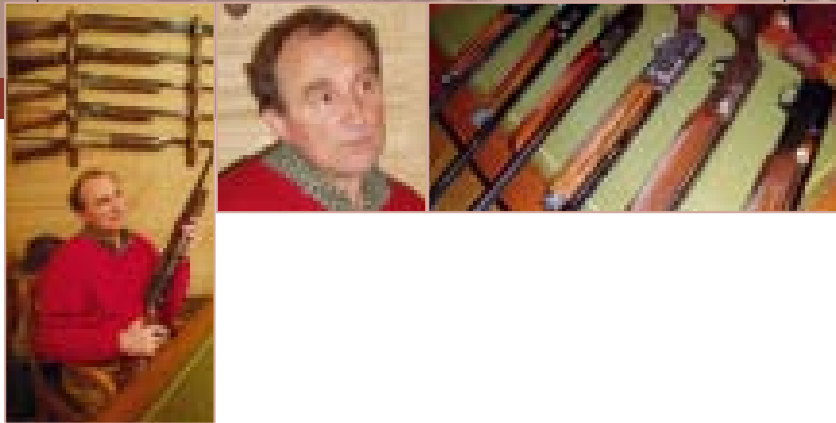
it comes with me to the woods at the end of the season, remembering its first outing and its first woodcock, shot as it "jinxed" it way over the top of a Beech tree.

- The "Auto 5 Final Tribute".....FN's "latest contribution" to the Auto 5. I slide the breech, I mount the gun to my shoulder, I wipe it over with a cloth but I haven't taken it out yet. Such a "beauty" as I'm slightly afraid of the odd scratch or knock, it hasn't fired a shot yet....., but it will!

- I finish with my one regret; I still haven't bought the BROWNING gun for my favourite game bird: the Red Grouse. I still have to choose with which from the wonderful Browning range will I forever remember my first trip to the Moors, which will go perfectly with the tremendous challenge that this King of Sporting Birds offers? I'm sure they all will!

JEAN-PIERRE DEKEISTER


BROWNING
The Best There Is



B Y B R O W N I N G

CONTENTS

BROWNING, A PASSION	2
CONTENTS	3
SPIRIT OF JOHN MOSES BROWNING	4
BROWNING «THE BEST THERE IS»	6
CUSTOM SHOP GUNS	8
HUNTING FIREARMS	
OVER-AND-UNDER SHOTGUNS	22
SEMI-AUTOMATIC SHOTGUNS	32
EXPRESS RIFLE	42
SEMI-AUTOMATIC RIFLES	44
REPEATING RIFLES	51
SCOPES - OPTALENS	56
GAME AND TARGET SHOOTING (GTS)	60
TARGET SHOOTING	
OVER-AND-UNDER SHOTGUNS	64
.22 RIFLES	76
HAND GUNS	77
SCOPE MOUNTING	80
OUTDOOR	
CLOTHING	82
ACCESSORIES	92
CARTRIDGES - COMPRESSED AIR	99

The trademarks displayed, except the Winchester® trademark are the exclusive property of Browning International.
No use will be allowed prior to formal approval by Browning International, and unauthorised use will be prosecuted.
The Winchester® trademark is licensed to Browning International by Olin Corporation. (USA)
The documents, information, technical data, and photographs displayed in the

present catalogue may not be reproduced, modified, translated or inserted in a databank, communicated to the public, in whole or in part, in any form whatsoever, without Browning International's prior and written approval. All rights reserved for all countries.»
Specifications in this catalogue are liable to change without prior notice.
The purchase and possession of the products shown in this catalogue are subject to local legislation in force.

- Editor in charge: Philippe Chamoret, Marketing Manager Browning International
- Design & computer graphics: Agence To Be, Thimister (Belgium) www.to-be.be
- Photographs: To Be, Armand Dedée, Browning et Winchester
- Printing: Casterman



Spirit of

JOHN MOSES BROWNING



4

5

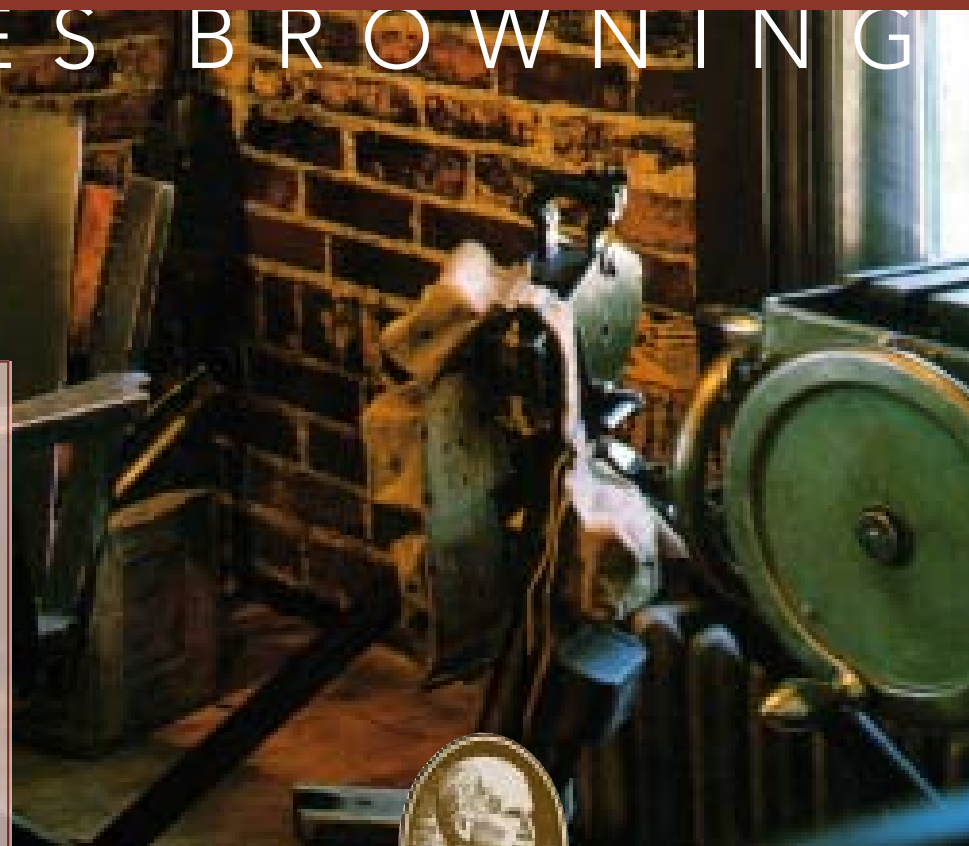
John Moses Browning: a life of invention

John Moses Browning was born on 23 January 1855 in Ogden, Utah. He was one of the 22 children of Jonathan Browning, who, being a good Mormon, had three wives. Gun making ran in the family of the young John Moses, as his father was a gunsmith who had already been responsible for a number of innovations in the field. As a young boy, he spent his time in his father's workshop, and knew the name of every part of a gun before he could read. From the age of 6, he made fishing accessories from scraps of metal which he hammered into shape on an improvised, child-sized work bench made from a wooden crate. Even his father, a man well known for his patience, found it difficult to conceal his impatience at the incessant stream of questions from the young John Moses which disturbed him in his work...

The 19th Century American boyhood of John Moses Browning abounds with anecdotes, all of which share a point in common : they all point, with a few years advance, towards him becoming an internationally renowned inventor of genius. Numerous authors compare Browning with Thomas Edison, another self-taught genius of that time.

At the age of 23, John Moses lodged his first patent, for the «J.M. Browning Single Shot Rifle». The drafting of the text of the patent in the required form caused him more difficulty than the invention itself. This invention consisted of a simplification of the percussion mechanism, making it more durable and reliable.

It was at about this time that Browning married Rachel Teresa Child, who would remain his life-long companion.



Shortly before his death, his father handed over his business to the young Browning who, in association with his brother Matt, despite having less than one thousand dollars in the bank and no experience of machine-tool operation, transformed the humble store into a small gun making workshop employing seven people. But from the start, the remoteness of their location, thus a lack of a ready supply of customers, and the lack of capital meant that the business struggled to survive until, that is, luck intervened to make the inventor

known.. A representative of the Winchester company having chanced upon a gun made by the Browning brothers in another state and, considering its design to be of interest, bought it from its owner and sent it to his superiors in the company's head office. So impressed were they that the managing director of Winchester himself set out straight away on a six day journey to what, at that time, was still the wild West, to meet the Browning brothers. Despite his astonishment at finding two young men in their twenties in a rustic workshop,

he was perceptive enough to not be fooled by appearances and conclude commercial deals with them which would last for several decades.

Over the years, Browning granted licenses to several manufacturers for dozens of inventions and firearms developed by him. It is no exaggeration to say that he invented everything in the field of firearms. What is more, it should be noted that the vast majority of his technological innovations have not been able to be bettered or replaced since the beginning of this century, a clear

demonstration of the level of perfection achieved. In 1897, it was another manager with flair, this time from the Fabrique Nationale (National Weapons Factory) at Herstal in Belgium, who noticed a 7.65 Browning pistol incorporating a novel locking mechanism. The FN obtained the manufacturing licence, and thus began an uninterrupted period of collaboration between the inventor from the Great Salt Lake and the factory on the banks of the river Meuse. Browning reached the peak of his art with the Auto-5 semi-

automatic shotgun, which was a considerable commercial success and prompted his first visit to the Herstal works. But his world-wide acclaim is without doubt due to the 9 mm Hi-Power semi-automatic pistol, of which over 10 million have been made and which, since 1907, has been adopted by the majority of the world's police forces and armies. Browning has indeed become the generic name for this type of gun. None of Browning's success is due to chance : like all of the American pioneers he turned

luck to his advantage only through an enormous amount of hard work. His strength of character and the steadfastness of his principles were out of the ordinary. Thus it was that, towards the end of his life, when offered an honorary title by a university, he refused it for the simple reason that «he had made it a rule never to accept anything that he had not gained as a result of his own work». He died of a heart attack as he worked in his office at Herstal, during the course of his 61st visit to Belgium in 1926. His

final words, as he lay dying in the arms of his son, Val, were : «Son, I wouldn't be surprised if I were dying...» Work stopped and the workers paid homage to the man who had entrusted their company with the task of turning so many of his inventions into reality. His body was repatriated to the United States, where he was buried with full military honours. His son Val continued his collaboration with the Belgian factory without interruption a collaboration that continues until this very day.

ARMS HISTORICAL

TIMELINE

Jan. 23, 1855

Birth of John Moses Browning.

Spring, 1878

John Browning begins work on his first single shot rifle.

Oct. 7, 1879

U.S. Patent No. 220,271 was granted to the single shot rifle.

1880

With the aid of his brothers, John Browning established his arms factory.

Sept. 13, 1882

Patent filed on lever action, exposed hammer, tubular magazine rifle.

Spring, 1883

Mr. T.G. Bennett, Vice-President and General Manager of Winchester Repeating Arms Company, comes to Ogden, Utah Territory and forms an alliance that is to last nineteen years and is to change the course of firearms development. As part of the transaction, the Single Shot is sold to Winchester, and Mr. Bennett is assured of first rights on a new repeater.

The Single Shot becomes the Winchester Model 1885.

Oct. 1884

Patent No. 306,577 was granted on the new repeater and John, together with his brother Matt, traveled to New Haven, Connecticut to deliver what was to become the famous Winchester Model 1886.

Jan. 6, 1890

John filed his first patent dealing with gas operation.

Jan. 19, 1894

Filed patent on what would become the Winchester Model 1894, the first repeating action sporting rifle to handle smokeless powder cartridges.

This rifle is ascribed by many to be the most popular high powered rifle ever built.

Sept. 14, 1895

Filed patent application on first semi-automatic pistol.

Jul. 17, 1897

A contract between Browning and Fabrique Nationale was signed which authorized the Belgium firm to manufacture a blowback operated, 32 caliber semi-automatic

pistol for all markets outside the United States.

Production commenced in 1899.

Feb. 8, 1900

The first of four patents were filed on the revolutionary autoloading shotgun. It would be manufactured by Fabrique Nationale in 1903 and by Remington Arms Company in 1905.

Mar. 24, 1902

A contract was signed granting Fabrique Nationale exclusive world rights to manufacture and sell the auto-loading shotgun (AUTO 5).

Feb. 17, 1910

Patents were filed on a 45 caliber semi-automatic pistol. It served as the official United States military sidearm for almost 75 years.

Jul., 1917

Began work on the 50 caliber Water Cooled Machine Gun. Completed too late for World War I, this weapon played a prominent role in World War II and Korea.

Aug. 1, 1917

Application for patent filed on the Browning Automatic

Rifle.

1918

The BAR first saw combat.

Oct. 15, 1923

The first of two patents were filed on the Superposed Over/Under shotgun (B 25).

Jun. 28, 1923

Patent application was filed on a 9mm short-recoil, locked-breech, exposed-hammer semi-automatic pistol. This was John M. Browning's last pistol development.

Nov. 26, 1926

John Moses Browning died of heart failure at Liege, Belgium.

The great gunmaker had laid down his tools.

1936

Auto-5 «Sweet Sixteen» was introduced.

1955

Double Automatic 12 gauge shotgun introduced.

1966

BAR semi-automatic sporting high powered rifle was introduced.

May, 1969

BL-22 Lever Action 22 rifle.

1968

BLR Lever Action high-power rifle added.

1969

B-SS 12 gauge side-by-side shotgun added.

1970

New guns introduced: 12 gauge Citori over/under shotgun, 12 gauge Liege over/under shotgun, B-SS in 20 gauge.

1972

Auto-5 production went to Japan latter part of 1976.

1977

90% of Browning Arms Company outstanding stock was purchased by FN and Miroku.

1978

Browning enters the company's Centennial year.

B26 over and under shotgun introduced

1980

B27 over and under shotgun introduced

1983

Injector chokes offered.

1984

Gold Classic A-5 introduced. Model 1895 in 30-06 caliber.

1985

B 125 over and under shotgun introduced A-Bolt centerfire introduced, Model 1885 reintroduced.

1987

A-500 shotgun introduced.

1988

Custom Gun Shop reinstated in Belgium featuring the B-125 and B-25 Superposed.

B 127 over and under shotgun introduced

1990

Back-bored barrels introduction.

1991

B 325 over and under shotgun introduced

BDM (Double Mode) pistol and 9mm Hi-Power Practical introduced.

1994

BOSS® (Ballistic Optimizing Shooting System) introduced. Gold auto loading shotgun introduced in 12 and 20 gauge models.

1995

B 425 over and under shotgun introduced

1997

BPR pump rifle introduced in long and short action.

1998

Gold 3 1/2" Hunter introduced - first gas-operated auto loading shotgun to cycle all 2 3/4", 3" and 3 1/2" field loads. Auto-5 shotgun discontinued from line.

1999

Acera straight pull action rifle introduced

2000

Auto-5 Final Tribute offered.

2002

In a partnership with Winchester Ammunition, Browning introduces a new class of rifle calibers with the introduction of the 300 Winchester Short Magnum.

2003

B 525 over and under shotgun and CCS 525 double express rifle introduced

ShortTrac and LongTrac Semi-automatic rifle introduced.

Short magnum caliber family expanded to include 270 and 7mm WSM.

2004

Cynergy revolutionary over and under shotgun introduced

Fusion Evolve semi automatic shotgun introduced

Browning and Winchester take the short magnum concept to the next level with the introduction of the 223 and 243 super short magnum. This not only includes these new calibers, but a new class of bolt-action rifle - the super-short action. Super-short-action A-Bolts are chambered for 223 and 243.



BROWNING «THE BEST THERE IS»

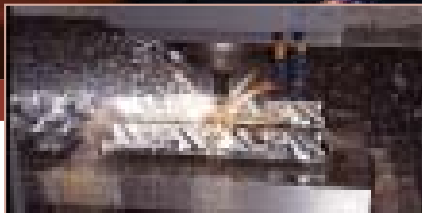
Browning has been developing hunting guns that are as hardwearing as they are elegant for 125 years. Our great experience has allowed us to create a perfect union of ancestral armoury traditions and up-to-the minute technologies. Made by hunters for hunters, Browning guns are more than ever a guarantee of quality and reliability. Because we are willing to listen to your requirements, your desires and the evolution of hunting we draw on tradition to constantly create new products that are worthy of the brand's prestigious heritage.



6

-

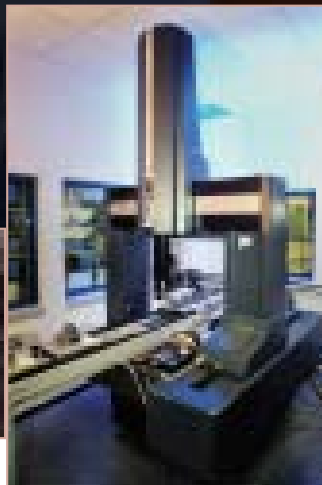
7



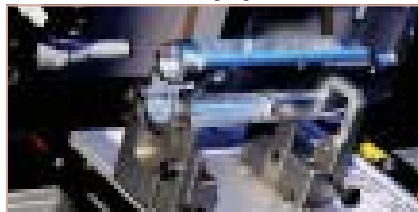
1. Quality / reliability

The legendary quality of Browning guns results from the care that is taken with every manufacturing stage for example:

- Today, a fleet of ultramodern, numerically controlled machines assures mechanisation.



- A 3-dimensional reading machine guarantees infallible production checking and unrivalled respect for tolerances to provide increased manufacturing rigour.



B Y B R O W N I N G

- Thanks to PVD technology, metal surfaces are given micro-coverings in a titanium nitrate, chrome nitrate or tungsten carbide air vacuum. The advantage of this technique is that it increases the hardness and long-life of the parts and their resistance to corrosion



More modern materials, from the aeronautic and automobile industries state-of-the-art sectors, accompany noble, traditional materials. On our guns, walnut and steel are henceforth associated with aluminium, composite materials and carbon fibre for improved performance and reliability that are in keeping with the brand's reputation.

2. Innovation / modernity

Because a gun should be both attractive and useful we turn to the most advanced creation techniques to constantly push back the frontiers of design but without forgetting that efficiency prevails in the field.

Some of the numerous recent inventions are shown below:

- The new compact magnum calibres (Winchester Short Magnum, Winchester Super Short Magnum), which are more powerful but generate less recoil than classic magnums, have been developed in association with Winchester, the other great Browning International group brand. The miniature magnums satisfy hunters who desire lighter, more manageable guns perfectly.

The success of this new ammunition has resulted in it being adopted by the entire armory industry, which has adapted its guns to our cartridges. Browning has chosen to develop new exclusive, specific, patented gun systems to further satisfy these new calibres' specific constraints and thus to optimise their performance with total operational safety.

- The B.O.S.S. system

This device integrates a mouth brake to reduce a rifle's recoil whilst improving its accuracy by harmonising the barrel's vibrations with specific ammunition. (p. 45)

- BACK BORE technology

This exclusive back-boring process, which many have attempted to imitate, improves the smooth barrels' ballistic performance. (p. 30)

- CYNERGY

This smooth, competition rifle has revolutionised the target-shooting world, it is the formula 1 of rifles. (p. 64)

SHORT & LONG TRACK

The semi-automatic B.A.R. rifle, which celebrates 40 years of experience, has been joined by a completely new rifle, developed and designed specially for the new WSM (SHORT TRAC) calibres. Fans of conventional calibres can use this new arrival with the LONG TRAC model. (p.46)

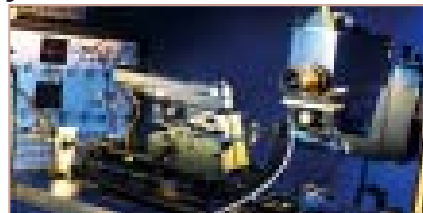
- FUSION EVOLVE

When you are the inventor of the semi-automatic rifle, you have a duty to employ state-of-the-art technology, the FUSION EVOLVE, with a gas-operated mechanism, is perfectly robust and reliable. It incorporates BACK BORE technology. (p. 34)

3. Performance / efficiency

Since the beginning of the last century, the Browning brand has become legendary as the source of the greatest innovations in the armory industry.

These innovations saw the light of day thanks to research and development teams based in Europe and the United States (Browning and FN) and using the most modern technologies such as Computer Aided Design (C.A.D.), high



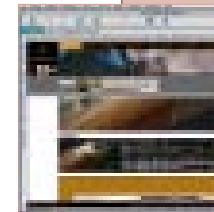
frequency cameras at 25.000 images/second... ; all of this associated with a stringent final quality check which guarantees maximum reliability as far as performance is concerned.

Furthermore each product development is the subject of a series of « studies per finished element » that aims to check that the gun has been correctly dimensioned as well as the gun's operation and mobile parts.

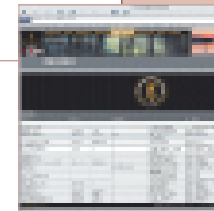


www.browning-int.com

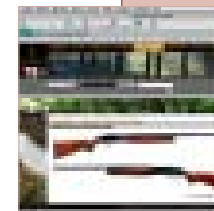
Be the first to discover all our latest additions as well as many other advantages



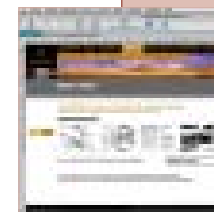
Order a catalogue for a friend, receive information or offers as a privileged customer



An advice centre

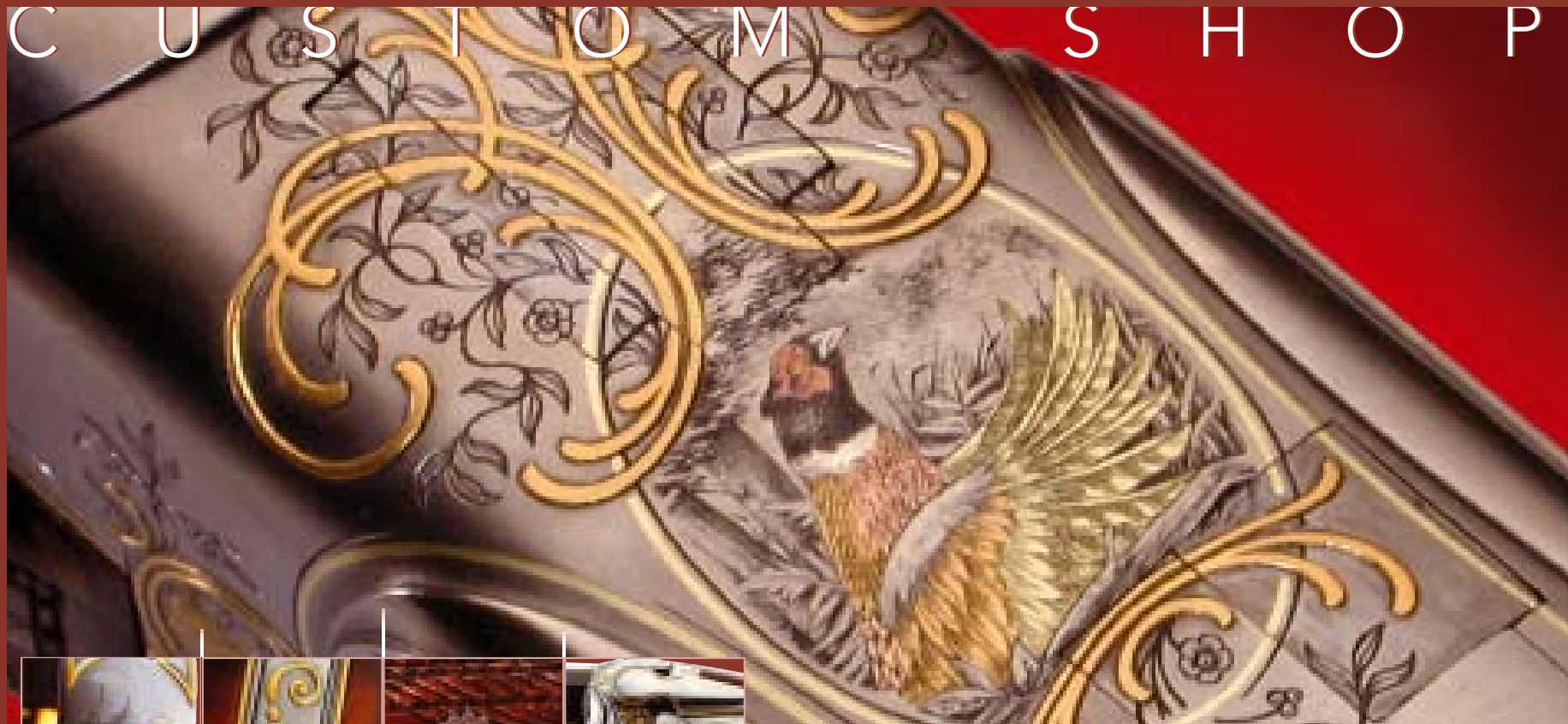


Know your gun inside out, know how to clean and maintain it ...



Information concerning new products

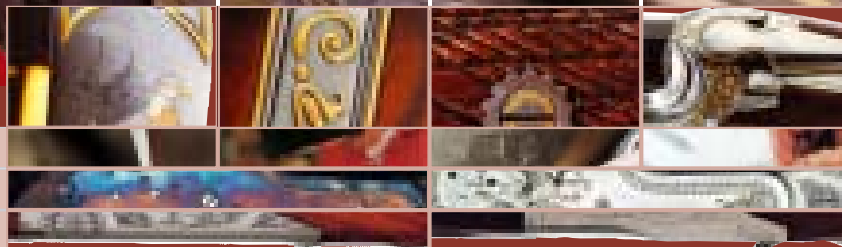
C U S T O M S H O P



8

-

9

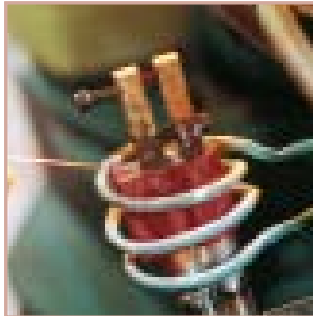


OVER-AND-UNDER SHOTGUNS	1	0	-	1	3
ENGRAVINGS	1	4	-	1	5
SIDE-BY-SIDE SHOTGUNS	1	6	-	1	7
RIFLES	1	8	-	1	9

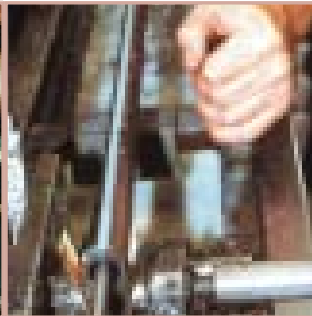
B Y B R O W N I N G

EXCELLENCE

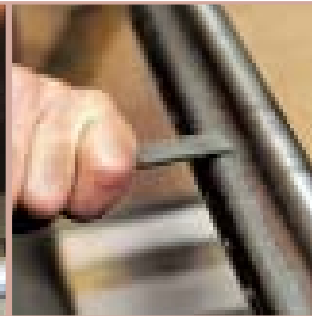
MADE IN BELGIUM



Barrel assembly



Chokes



Trimming



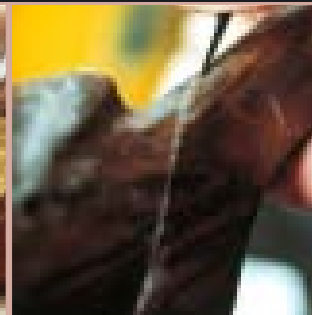
*Adjusting of the
action frame*



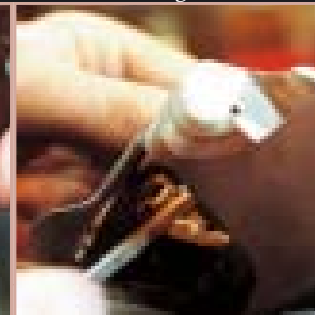
Wooden parts



Wood



Checkering



*Assembly before
finishing touches*



Re-filing



Polishing



Engraving



*Assembly after
finishing touches*

- The manufacture of fine hunting and sports weapons.
- The greatest respect for traditional production norms.
- The concept of a made-to-measure weapon choice and wood finishes.
- Customised engraving.
- Specific quality control for each weapon.
- Direct contact with our technicians.
- We share our passion for our profession with our clients.
- Hand-made using techniques which retain the best of the traditional methods, weapons which leave the «Custom Shop» workshop in Herstal are unique items.



B25 Golden Feather
The B25 Golden Feather and prestigious model was in fact designed and manufactured by our team of qualified craftsmen.

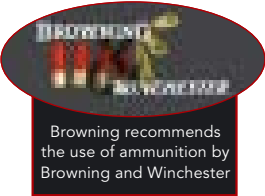


B25 Golden Covey

B Y B R O W N I N G

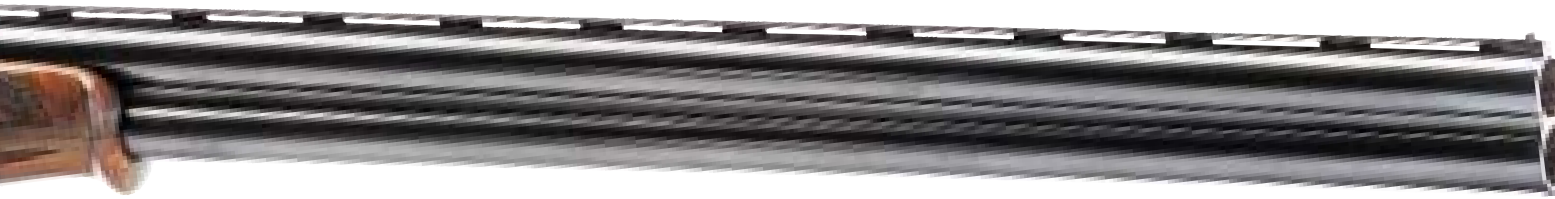
MODEL	B25 Special Game 13	B25 Special Game 24	B25 Special Duck	B25 Special Woodcock
BARRELS				
Calibre	12	20M	12	12
Chamber	70 mm	76 mm	76 mm	70 mm
Length	700 mm	670 mm	760 mm	670 mm
Chokes	fixed	fixed	fixed	fixed
Ribs	ventilated 6 to 4 mm	ventilated 6 mm	ventilated 8 mm	-
STOCK (*)	straight or 1/2 swan neck	straight or pistol	pistol	straight
Length	375 mm	370 mm	375 mm	365 mm
Drop at comb	36 mm	38 mm	36 mm	39,5 mm
Drop at heel	56 mm	58 mm	56 mm	63,5 mm
FORE-END	tulip	tulip	tulip	rounded game
TOTAL WEIGHT (**)	3 kg	2,8 kg	3,45 kg	2,75 kg
FINISHING				
Action frame	blued or greyed	blued or greyed	greyed	blued
Wood	walnut, oil finished	walnut, oil finished	walnut, oil finished	walnut, oil finished
SPECIAL FEATURES	Engravings B2G, C11, C12, C2G, D2L, D11, D12, D5G, Sp.Autum and Cheverny on "Box-lock models..		Specific engraving on these models	Specific engraving on these models
	Engravings I1, M1, M2, E1, Windsor Or, Renaissance, Cheverny Side Plate, Chenonceau and Special Woodcock on side-plate engraving models with three piece fore-end and flush pad.			Semi back-bored barrels. Longer forcing cone No ejection system
OPTIONS	May be customised with your own stock measurements, engraving, second set of barrels or made as a pair. (P.O.A.)			

(*) Average values



HUNTING

B25 OVER-AND-UNDER SHOTGUNS



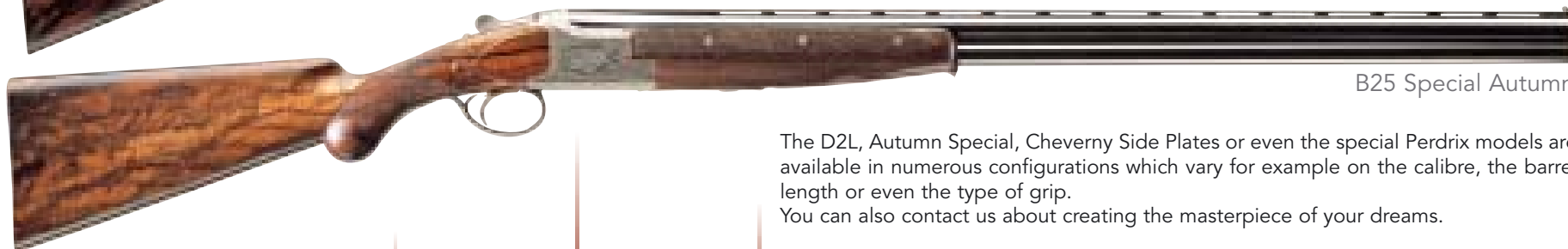
B25 D2L



B25 Cheverny Side Plates



B25 Special Perdrix



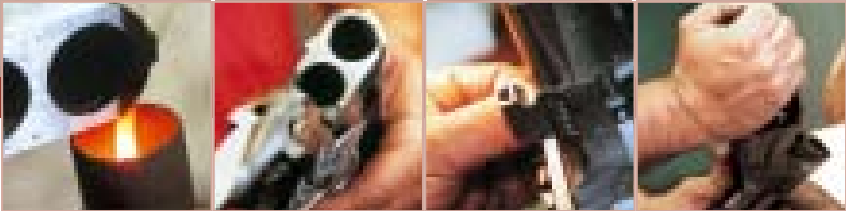
B25 Special Autumn

The D2L, Autumn Special, Cheverny Side Plates or even the special Perdrix models are available in numerous configurations which vary for example on the calibre, the barrel length or even the type of grip.
You can also contact us about creating the masterpiece of your dreams.





1 2 - 1 3



B 25 B2G Sporter

The B 25 B2G has become a great classic and is one of the most appreciated models. In its hunting class version, it is generally fitted with long 76 or 81 cm barrels, with a large type ventilated rib and an intermediary foresight. All this so that the 25/25s become a habit.

B Y B R O W N I N G

MODEL	B25 Sporting 205	B25 Sporting 206	B25 Sporting 207	B25 Sporting 208	B25 Trap 2	B25 Trap Evolution 2	B25 Skeet 105
BARRELS							
Calibre	12	12	12	12	12	12	12
Chamber	70 mm / 76 mm	70 mm / 76 mm	76 mm	70 mm	70 mm	70 mm	70 mm
Length	710 mm	760 mm	760 mm	810 mm	760 mm	760 mm	710 mm
Chokes	fixed	fixed	fixed	fixed	fixed	fixed	fixed
Ribs	ventilated 12 mm	ventilated 12 mm	ventilated 8 mm	ventilated 12 mm	ventilated 16 mm	ventilated 16 mm	ventilated 12 mm
STOCK (*)	pistol	pistol	pistol	pistol	pistol with anti-recoil	pistol with anti-recoil	pistol
Length	375 mm	375 mm	375 mm	375 mm	375 mm	375 mm	375 mm
Drop at comb	36 mm	36 mm	36 mm	36 mm	36,5 mm	36,5 mm	36 mm
Drop at heel	56 mm	56 mm	56 mm	56 mm	41 mm	41 mm	56 mm
FORE-END	tulip	tulip	tulip	tulip	semi-beavertail	semi-beavertail	semi-beavertail
TOTAL WEIGHT (**)	3,25 kg	3,35 kg	3,4 kg	3,5 kg	3,55 kg	3,5 kg	3,25 kg
FINISHING							
Action frame	blued or greyed	blued or greyed	blued or greyed	blued or greyed	blued or greyed	blued	blued or greyed
Wood	walnut, oil finished	walnut, oil finished	walnut, oil finished	walnut, oil finished	walnut, oil finished	walnut, oil finished	walnut, oil finished
SPECIAL FEATURES	Engravings B2G, C11, C12, C2G, D2L, D11, D12, D5G, Sp. Autumn and Cheverny on "Box-lock" models. Engravings I1, M1, M2, E1, Windsor Or, Renaissance, Cheverny Side Plate, Chenonceau and Special Woodcock on side-plates models with 3 pieces fore-end and flush pad.						
	Specific engraving for model «Gold 25» (Sporting 207) and Trap Evolution 2 (+ Disconnectable ejectors with adjustable and removable trigger)						
OPTIONS	Pistol grip stock on measurements. Custom guns. Second sets of barrels				Stock on measurements. Custom guns or pair of guns		

(*) Average values



Browning recommends the use of ammunition by Browning and Winchester

TARGET

B25 OVER-AND-UNDER SHOTGUNS



B25 Trap Evolution 2



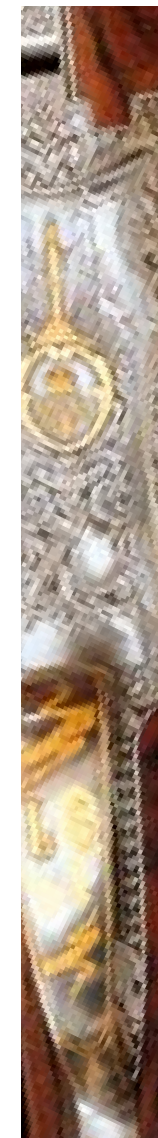
B25 Sporting 207 GOLD 25

B25 Trap Evolution 2

A genuine shooting machine, the B25 Trap has 76 cm long barrels and a 16 mm vented rib and is equipped with an adjustable trigger, disengageable ejectors, a luminescent front sight and a «Decelerator» anti recoil butt plate.

B25 Sporting 207 GOLD 25

Mainly designed for sporting clays, the GOLD 25 could also be perfect for hunting, thanks in particular to its 8 mm vented rib and its 76 mm chamber that can fire magnum cartridges. With an anti-recoil butt plate providing great shooting comfort, it is also characterised by its special "GOLD 25" engraving



C U S T O M S H O P



B25 grade B2G



B25 grade C11



B25 grade C12



B25 grade C2G



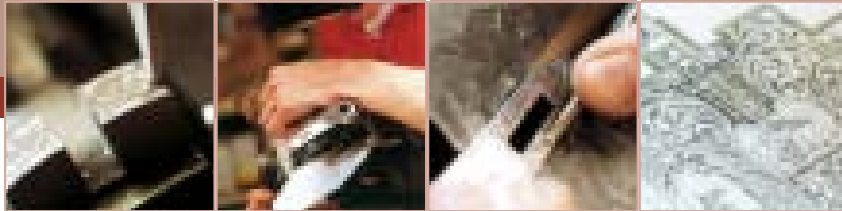
B25 Traditional



B25 Spécial Woodcock



B25 Spécial Duck



B Y B R O W N I N G



B25 Gold 25



B25 Trap Evolution 2



B25 grade D11



B25 grade D12



B25 grade D2L



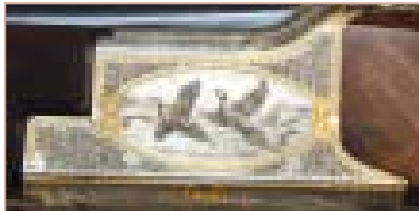
B25 grade D5G



1 4 - 1 5

ENGRAVINGS

B25



B25 Special Autumn



B25 Cheverny



B25 grade I1



B25 grade M1



B25 grade E1



B25 grade M2



B25 Special Perdrix



B25 Windsor Or



B25 Cheverny Side Plate



B25 Chenonceau

OPTIONS

As each Custom Shop gun is an exceptional gun, we offer you numerous possibilities to customise and adapt them as you wish.

The main options offered are the following :



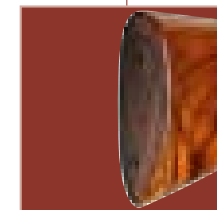
Half pistol stock



Tears drop



Three piece fore-end



Flush pad

BSL-SA.22
BAR

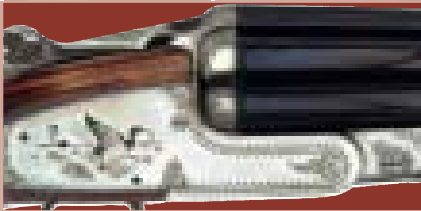
C U S T O M S H O P



1 6 - 1 7



BSL Grade LC1



BSL Grade LC2

The BSL side-by-side By Lebeau Courally
A traditional side lock action shotgun equipped with "Holland & Holland" type locks with double trigger and automatic ejectors. This gun, which is assembled and finished by Lebeau Courally, exists in 12 or 20 gauge versions and can be chambered to 2 3/4" or 3". The barrel lengths are 69 cm (20 gauge) or 71 cm (12 gauge). Two levels of engraved finish are offered : LC1, with a greyed action frame and decorative engraving or LC2, with a grey-tempered action frame, decorated with hunting scenes.

B Y B R O W N I N G

MODEL	BSL Cal. 12	BSL Cal. 20
BARRELS		
Calibre	12 or 12 M	20 or 20 M
Chamber	70 or 76 mm	70 or 76 mm
Length	710 mm	690 mm
Chokes	fixed	fixed
Ribs	concave, sunken	concave, sunken
STOCK (*)		
Length	385 mm	365 mm
Drop at comb	38 mm	39 mm
Drop at heel	58 mm	63 mm
FORE-END	splinter	splinter
FORE-END	double	double
TOTAL WEIGHT (*)	2,95 kg	2,8 kg
FINISHING (*)		
Action frame	greyed	greyed
Wood	walnut, oil finished	walnut, oil finished
OPTIONS		
Custom gun and stock to your measurements		

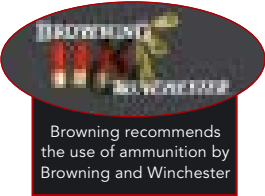
(*) Average values

MODEL	BAR ACIER Affût Std	BAR ACIER Affût Mag	BAR ACIER Battue
BARRELS			
Length	550 mm	600 mm	550 mm
Calibre	(1)	(2)	(3)
Rearsight	LPA	LPA	battle rib
Frontsight	front bead with foresight protection	front bead with foresight protection	red translucent
STOCK (*)			
Length	351 mm	351 mm	351 mm
Drop at comb	42,5 mm	42,5 mm	40,5 mm
Drop at heel	52 mm	52 mm	49 mm
MAGAZINE			
Type			
Capacity Std	4 or 2 (***)	3 or 2 (***)	4 or 2 (***)
Capacity Mag			3 or 2 (***)
TOTAL WEIGHT (*)	3,5 kg	3,75 kg	3,5 kg - Mag : 3,7 kg
FINISHING			
Wood	walnut, satin varnish	walnut, satin varnish	walnut, satin varnish
SPECIAL FEATURES			
4 threaded holes for scope mounting			
ACCESSORIES			
Mounted : screw head for sling			
Furnished : pair of removable sling swivels			
OPTIONS			
Available : Mk1 (limited quantity) - Grades IV			

(*) Average values
(**) or fixed according to local legislation
(***) according to local legislation
(1) .243 Win, .30-06 Sprg, .270 Win, .308 Win
(2) .300 Win Mag, 7 mm Rem Mag, .338 Win Mag
(3) .300 Win Mag, 7 mm Rem Mag, .338 Win Mag, .270 Win, .30-06 Sprg, .308 Win.

MODEL	SEMI-AUTO .22
BARRELS	
Length	490 mm
Calibre	.22 S or .22 LR
Rearsight	folding, adjustable in elevation
Frontsight	transversal
STOCK(*)	
pistol	
Length	345 mm
Drop at comb	30 mm
Drop at heel	67 mm
MAGAZINE	
Tulip splinter	
Type	tubular in stock
Capacity without reducer	11 LR or 15 S
Capacity with reducer	9
TOTAL WEIGHT (*)	2,3 kg
FINISHING	
Receiver	blued
Wood	satin varnish
OPTIONS	
Custom model	
Engravings Grades II and III	

(*) Average values



HUNTING



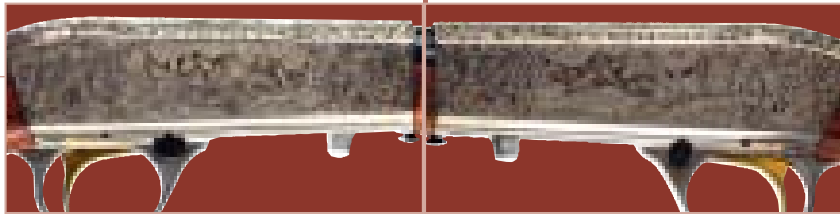
BSL



BAR Grade D

S.A .22 Grade 3

S.A .22 Grade 3



SA.22

Semi-automatic rifles BAR Grade D

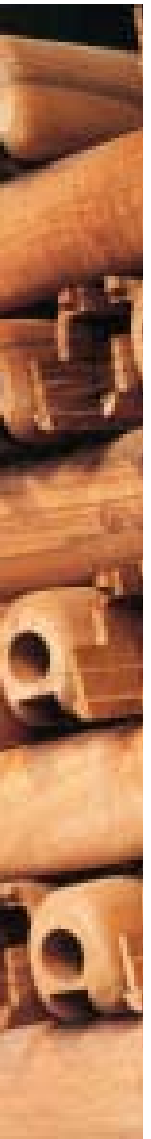
This is the luxury version of the BAR MK1, assembled in the Custom Shop. It is available in all the usual calibres in "Battue" or "Affût" versions.



SA .22 Grade 2

.22 Semi-Automatic rifle Grade 2

The best known and most copied .22 Semi-Automatic. This gun is particularly light and efficient. The barrel is removed in a trice. Produced by the Custom Shop using original parts, it is available in grades II, III and IV.





Fitted with side plates, this rifle exists in a "Custom" version having 65 cm barrels with a battue-type rib and a folding «ear shaped» leaf rear sight. It has a 3 piece fore-end and a pistol grip stock with teardrops and with a hidden butt plate, in walnut specially selected for the direction of its grain. The CCS 25

Express CCS 25 "Custom" with side-plate engraving exists in numerous calibres, such as .270W, .30-06, .30R Blaser, 7X65R, 8X57JRS, 9.2X62 and 9.3X74R. It is also available in a box-lock version with a wide selection of engravings.



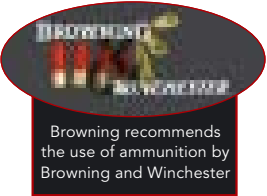
CCS 25 Bavarian



CCS 25 M1

MODEL	Express HERSTAL	Express CCS 25
BARRELS		
Calibre	8x57JRS - 9,3x74R	.270W, .30.06, .30 Blaser, 7x65R, 8x57JRS, 9,3x74R.
Length	590 mm	610 or 650 mm
Top Rib	battue, with pivot mounting	battue
Frontsight	bead maillechort	bead maillechort
Rearsight	fixed rearsight	folding
STOCK	pistol with anti-recoil	pistol
Length	370 mm	370 mm
Drop at comb	40 mm	40 mm
Drop at heel	62 mm	62 mm
FORE-END	tulip	tulip
TOTAL WEIGHT (*)	3,4 Kg	3,4 Kg
FINISHING		
Action frame	greyed	blued or greyed
Wood	oil finished	oil finished
SPECIAL FEATURES	Specific engraving Scope mounting	Engravings : B2E, BAVARIAN, DSG, M1 Flush pad on engraved models M1+ GM 3 pc
OPTIONS		
Scope mounting 2" set of barrels 20 Stock to your measurements		

(*) Average values



HUNTING

CCS 25 DOUBLE EXPRESS RIFLES



Express CCS 25 side-plate "Custom"



Express Herstal



CCS 25 B2E



Herstal



CCS 25 D5G

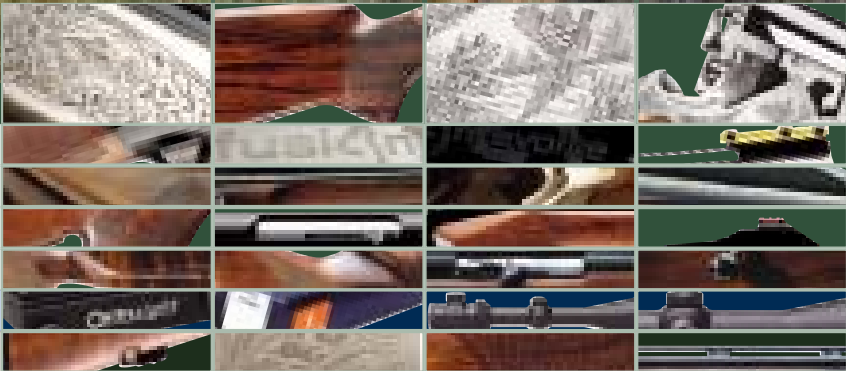
Express Herstal Cal. 8 x 57 JRS ou 9,3 x 74 R

This version offers the quality of the CCS 25 adapted for large game. It includes a battue-type rib incorporating the fixing locations for the base of a universal pivot scope mount (allowing a scope to be mounted in a matter of minutes and at lesser cost), a pistol grip stock with an insert type anti-

recoil pad and a tulip fore-end made from beautiful French walnut with an oil-rubbed finish. Medallion engraving featuring boar and deer, grey-tempered action frame. Only exists in calibres 8X57JRS and 9.3X74R.



2 0 - 2 1



OVER-AND-UNDER SHOTGUNS	2	2	-	3	1
SEMI-AUTOMATIC SHOTGUNS	3	2	-	4	1
EXPRESS RIFLES	4	2	-	4	3
SEMI-AUTOMATIC RIFLES	4	4	-	5	0
REPEATING RIFLES	5	1	-	5	5
SCOPES	5	6	-	5	9
G.T.S.	6	0	-	6	1

B Y B R O W N I N G

HUNTING

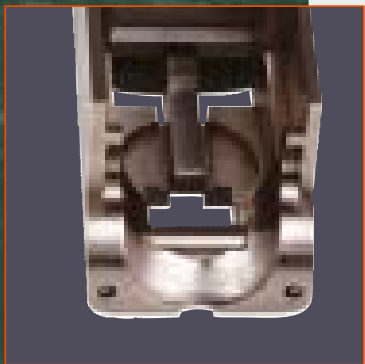
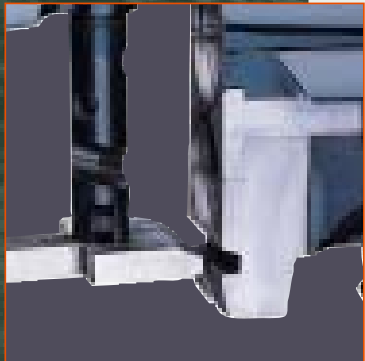


OVER-AND-UNDER SHOTGUNS

THE ARCHETYPE OF THE OVER-AND-UNDER SHOTGUN, CREDIBILITY AND A FABULOUS IMAGE IN THE HUNTING AND SHOOTING WORLD. A SYMBOL OF QUALITY, RELIABILITY AND INNOVATION, IT IS THE 5TH GENERATION OF THE LEGENDARY B25.

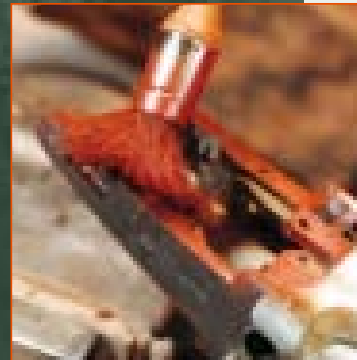
1. Faultless mechanics

- Action frame made of indestructible forged steel.
- Wide flat bolt which guarantees locking surfaces which are three times greater than other systems.
- A unique hinge pin, wide diameter, guarantees optimal resistance to wear. A guarantee of long-life.
- Impact wheel ejectors : straighter, more powerful ejection than retaining ejectors.
- Chromed barrels and chambers, don't rust, easy maintenance.



2. Hand-made product

- Exceptional high quality of manufacture. Each gun is adjusted by hand like a B25
- The only industrial shotgun with this level of performance.
- Barrel action frame/ action frame made in carbon black.
- Wood/metal adjustment with red ochre.
- Each set of parts is peculiar to a particular gun and follows this gun throughout the manufacturing process.



The Best Performing and most reliable shotgun

3. Guaranteed 10 years



- The only shotgun whose action frame is guaranteed for 10 years.

4. Essential features:



- Excellent balance
- Selective mono-trigger.
- Adjustable trigger with 3 positions on shooting models which allows you to change the trigger and make a final stock length adjustment.
- Steel Shot Proofed at the Liège test bench for the Invictor versions.



B525

H U N T I N G



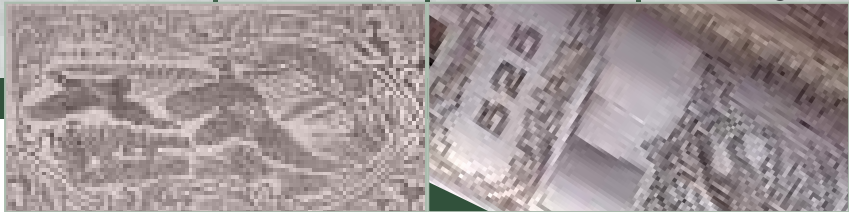
B525 Classic Cal 12 M

The multi-purpose gun par excellence as it incorporates a 3" chambered barrel that can fire both 70 mm (2"3/4) and 76 mm (3") cartridges, while at the same time being low in weight for the comfort of the shooter.

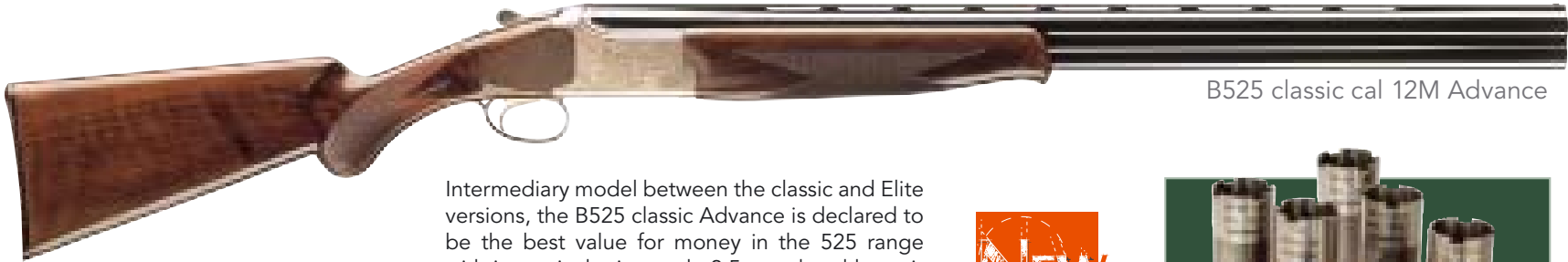


2 4 - 2 5

B525 Classic Cal 12 Magnum



B Y B R O W N I N G



B525 classic cal 12M Advance

Intermediary model between the classic and Elite versions, the B525 classic Advance is declared to be the best value for money in the 525 range with in particular its grade 2.5 wood and beautiful hunting scene engraving

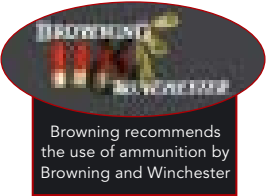


5 x Invictor

MODEL	B525
	Hunting/Hunter
BARRELS	
Calibre	12 M
Chamber	76 mm
Length	660 - 710 - 760 mm
Chokes	fixed / Invictor
Top Rib	ventilated 6 mm
STOCK (*)	
	Pistol
Length	375 mm
Drop at comb	36 mm
Drop at heel	56 mm
FORE-END	Tulip
TOTAL WEIGHT (*)	3,15 kg
FINISHING	
Action frame	greyed
Wood	satin varnish
OPTIONS	
	Advance - Elite - Prestige - Ultimate available in left-handed version (Gr1)
CHOKES	
	Hunter model : Invictor Inox 1/4 - 1/2 mounted. 3/4 - full, cyl. and key supplied

(*) Average values

The Best Performing and most reliable shotgun



B525 CLASSIC 12M

OVER-AND-UNDER SHOTGUNS



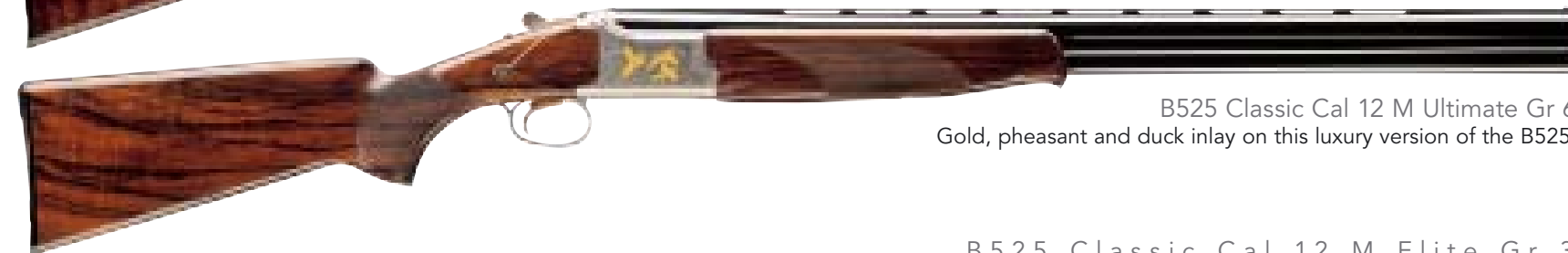
Only B525s equipped with an injector choke are tested for steel shot.



B525 Classic Cal 12 M Elite Gr 3



B525 Classic Cal 12 M Prestige Gr 5



B525 Classic Cal 12 M Ultimate Gr 6
Gold, pheasant and duck inlay on this luxury version of the B525.

B525 Classic Cal 12 M Elite Gr 3

Sobriety and elegance characterise the B525 in its Elite (Gr3) version : its engraving, the meticulously selected walnut and oil-rubbed finish make this an ideal compromise

between traditional looks and personality. It has a 3" Magnum barrel, just like the Classic model.

B525 Classic Cal 12 M Prestige Gr 5

The charm of the prestige (Gr 5) is more discreet. The fit of the barrels, the engraving and the very attractive old silver colour of its action frame make this an elegant gun of the best possible taste. It comes in an Opaline

case. This model has a stock with teardrops, and a multi-purpose 3" Magnum barrel like that of the Gr 1.

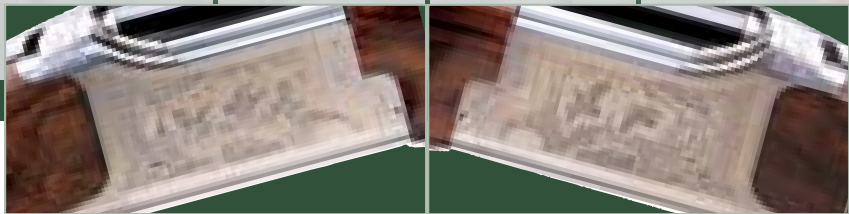
B525

H U N T I N G



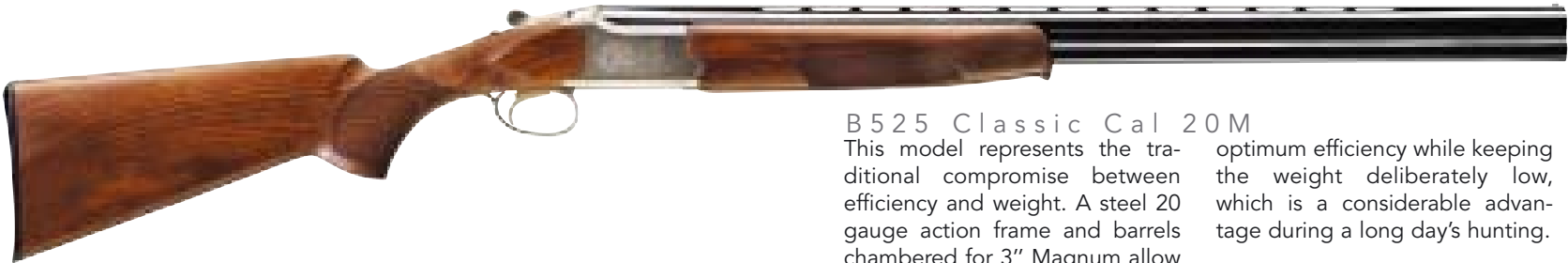
B525 Classic Cal 20M Elite Gr 3

B525 Classic Cal 20M Elite Gr 3
Particular attention has been paid to the choice of wood, the finish of the action frame and the type of engraving (incorporating new game scenes), all of which give this model a refined elegance while retaining the advantages of the basic model.



B525 Classic Cal 20M Elite Gr 3

B Y B R O W N I N G



B525 Classic Cal 20M

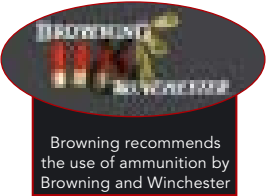
This model represents the traditional compromise between efficiency and weight. A steel 20 gauge action frame and barrels chambered for 3" Magnum allow

optimum efficiency while keeping the weight deliberately low, which is a considerable advantage during a long day's hunting.

MODEL	B525 Hunting/Hunter
BARRELS	
Calibre	20 M
Chamber	76 mm
Length	660 - 710 mm
Chokes	fixed / Invector
Top Rib	ventilated 6 mm
STOCK (*)	
Length	375 mm
Drop at comb	36 mm
Drop at heel	56 mm
FORE-END	Tulip
TOTAL WEIGHT (*)	2,9 kg
FINISHING	
Action frame	grayed
Wood	satin
OPTIONS	
FINISH : Elite - Prestige	
Straight hand stock version	
CHOKES	
Hunter model : Invector Inox 1/4 - 1/2 mounted, 3/4 - full and key supplied	

(*) Average values

The Best Performing and most reliable shotgun



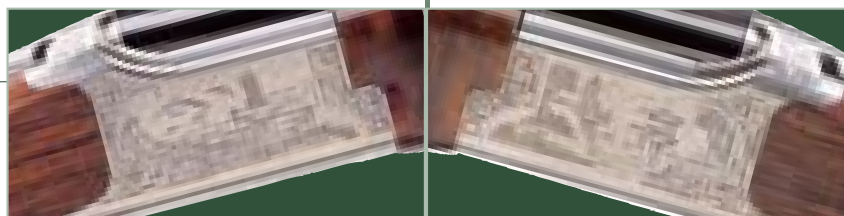
Browning recommends the use of ammunition by Browning and Winchester

B525 CLASSIC 20M

OVER-AND-UNDER SHOTGUNS



B525 Classic Cal 20M Prestige Gr 5
The top of the range of the B525 Cal 20, this grade 5 Prestige model will seduce you with the quality of its walnut and the depth of its engraving which is retouched by hand.



B525 Classic Cal 20 Prestige Gr 5



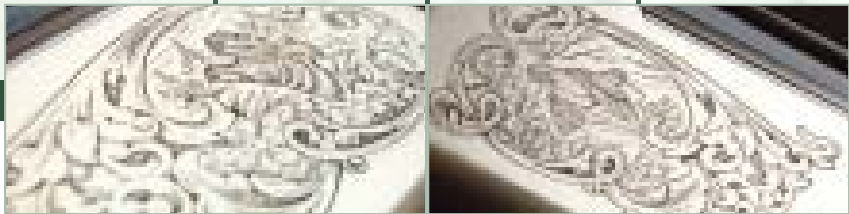
B525 Classic Cal 20M English Grip
Continuing the features of the Classic, this B525 distinguishes itself thanks to its English grip which gives it immaculate contours.

B525 CLASSIC LIGHT 12

OVER-AND-UNDER SHOTGUNS



2 8 - 2 9



B525 Classic Light Cal 12

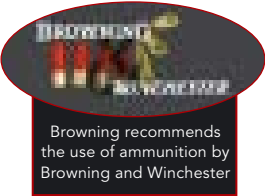
B525 Classic Light Cal 12

The gun of the 3rd millennium for the demanding hunter. All of the developments introduced with each new generation of Browning light models are incorporated in the B525 Light which constitutes the ultimate synthesis of efficiency, weight and good looks. An action frame made of a

lightweight «Aircraft» grade alloy reinforced with high strength steel inserts, a suitably profiled barrel and a suitable choice of wood and form result in a lightweight gun with perfect handling and balance, as well as an unequalled elegance, further enhanced by game scene engravings.

B Y B R O W N I N G

The Best Performing and most reliable shotgun



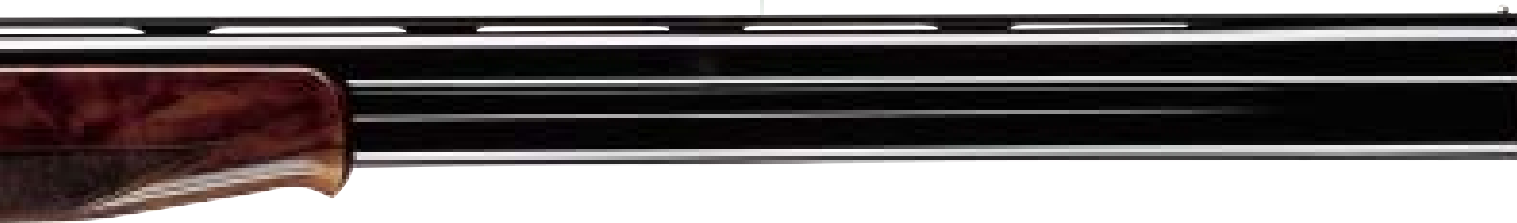
Browning recommends the use of ammunition by Browning and Winchester

MODEL	B525 LIGHT Hunting/Hunter	B425 Privilege	B425 light Hunting/Hunter	B425 light Elite 28
BARRELS				
Calibre	12	20 M/12M	20 M	28
Chamber	70 mm	76 mm	76 mm	70 mm
Length	610 - 660 - 710 mm	710 - 760 mm	660 - 710 mm	710-760 mm
Chokes	fixed / Invector	1/4 - 3/4	fixed / Invector	fixed
Top Rib	ventilated 6 mm	ventilated 6 mm	ventilated 6 mm	ventilated 6 mm
STOCK (*)	pistol	pistol	half-pistol	half-pistol
Length	375 mm	375 mm	360 mm	360 mm
Drop at comb	36 mm	36 mm	39 mm	39 mm
Drop at heel	56 mm	56 mm	61 mm	61 mm
FORE-END	Tulip	Tulip	Tulip	Tulip
TOTAL WEIGHT (**)	2,85 kg	2,85-2,9 kg	2,7 kg	2,6-2,7 kg
FINISHING				
Action frame	greyed	greyed	greyed	greyed
Wood	satin	oil finished	oil finished	oil finished
CHOKES (**)	Hunter Model: Invector Inox 1/4 - 3/4 mounted 1/2 - full and key supplied		Hunter Model : Invector Std 1/2 - 1/1 mounted, Inv. 1/4 and key supplied	

(*) Average values
(**) Fixed chokes for Hunting model; Invector chokes for Hunter

B425 SMALL CALIBRES

OVER-AND-UNDER SHOTGUNS



B425 Privilege Hunting Cal 20M
& Cal 12M



B425 Light 20M



B425 Light Elite 28

B425 Privilege Hunting Cal 20M

A «fine» firearm in the true sense of the word, the Privilege is one of the key products of Browning's know-how. The walnut used is a 4 star quality wood that is then oil rub finished by hand. The side-plate engraving combines deep engraving, decorative motifs and game scenes. This gun comes in an Opaline case.

B425 Light 20M

This gun represents a perfect combination of lightness, looks and strength. Its action frame is made of 7075 alloy with a stainless steel toner insert. Its new, narrower, tulip fore-end and semi pistol grip stock make this a particularly ergonomic gun.

B425 Light Elite 28

Sober and elegant : a new, original engraving, meticulously selected walnut with an oil-rubbed finish make this an ideal compromise between traditional looks and personality. This gun will provide maximum pleasure by allowing you to attempt a novel experience: sporting clays with a 28 !

3 PRECIOUS ADVANTAGES

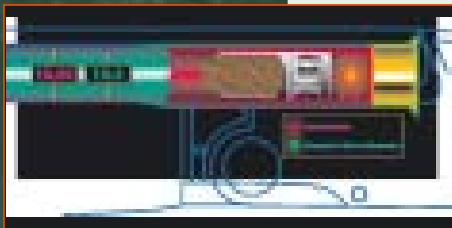
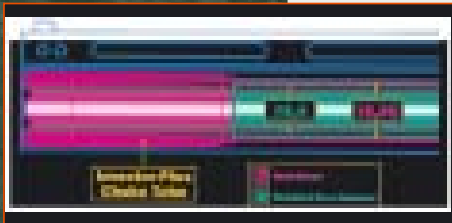
Browning reveals the professionals' secret: back-bored barrels.

First used in 1990, back-boring is a technical breakthrough that has allowed our shooters to win numerous medals.

Better impact and higher velocities for improved shooting accuracy. A «back-bored» barrel is one whose internal diameter (the bore diameter) has been increased beyond traditional specifications.

*The Best
Performing and
most reliable
shotgun*

1. Increased penetration velocity



- Back-boring ensures that there is less friction between the shot and the wall of the barrel. Instead of having to overcome friction, more of the energy generated by the gunpowder gases serves to propel the cartridge, thus increasing the velocity of the load

The shot retains its ballistic quality.

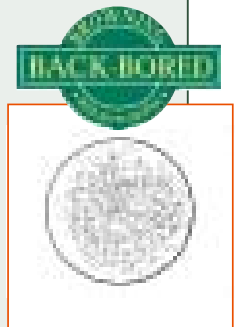
The force of contraction or the pressure exerted by the barrel wall on the load is reduced, thus reducing the number of deformed pellets fired.



2. Improved shot pattern



- The ballistic characteristics are improved and you achieve exceptionally uniform shots with many more effective pellets hitting the target.



3. Reduced recoil -6%

- A reduction in recoil means improved shooting comfort. In a back-bored barrel, the load passes more easily reducing the amount of recoil felt by the shooter, thus improving his shooting comfort.

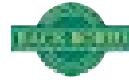


B425 SPECIALS

OVER-AND-UNDER SHOTGUNS



INVECTOR+
LONG CHOK



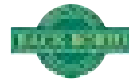
DURA-TOUCH
Armor Coating

3 1/2"

B425 Special Waterfowl Camo Cal 12
Now chambered in 89 mm or 3 1/2" , this version which is equipped with new Mossy Oak® Break up™ camouflage and Dura-touch coating, will give you unrivalled efficiency and comfortable use.



INVECTOR+
LONG CHOK

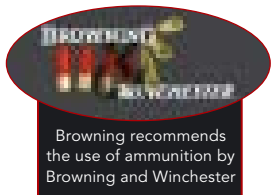


3 1/2"

B425 Special Waterfowl Cal 12 Mag
Designed for intensive use in natural aquatic environments, the Waterfowl will follow you on your duck and goose hunting expeditions with less risk of damage. Its stock is protected with the new Dura-Touch. It is chambered for 3 1/2" cartridges, and its barrel can accept steel shot and high load cartridges without any problem. The 62 mm «Invector Plus» Chokes ensure the best ballistic efficiency.

MODEL	B425 Special Waterfowl	B425 Special Waterfowl Camo
BARRELS		
Calibre	12	12
Chamber	89 mm (3 1/2")	89 mm (3 1/2")
Length	710 - 760 mm	760 mm
Chokes	Invector Plus	Invector Plus
Top Rib	ventilated 6 mm	ventilated 6 mm
STOCK (*)	rounded pistol	rounded pistol
Length	375 mm	375 mm
Drop at comb	38 mm	38 mm
Drop at heel	52 mm	52 mm
FORE-END	rounded	rounded
TOTAL WEIGHT (*)	3,4 kg	3,4 kg
FINISHING		
Action frame	greyed	greyed
Wood	satin varnish	Camo + Dura-Touch

(*) Average values



Browning recommends
the use of ammunition by
Browning and Winchester



1. Reliability & satility



- Gas plug system : this system is softer and more pleasant when shooting than an inertial system.
- The piston has a valve which operates independently, less pressure is then exerted on the piston, which results in more effective operation which is more reliable over time.

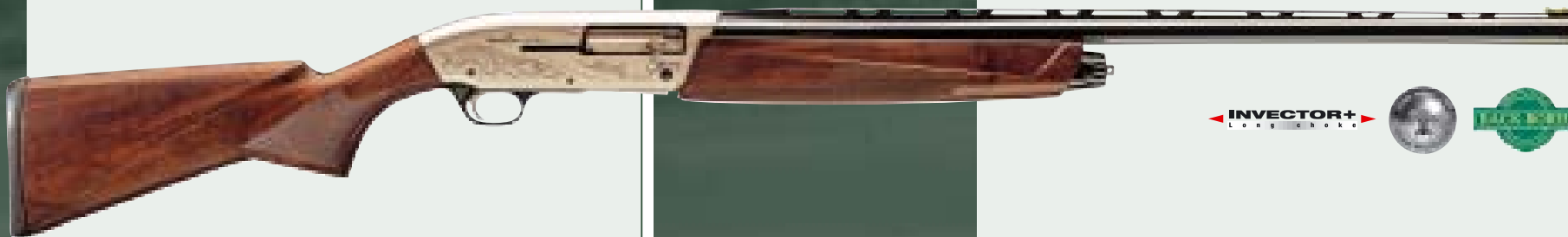


- Operates perfectly with all cartridges from 28gr to 56gr.
- With «soft» cartridges, the piston uses the bulk of the energy developed by the gases.
- With heavy cartridges, the excess gas is rejected by the piston's vents.

2. Modern design



An extra flat carry case allows you to easily carry all the accessories you need with you, and thus perfectly adapt the gun to all shooting conditions.




BROWNING
The Best There Is

INVECTOR+
Longshot



The most efficient shotgun in the field

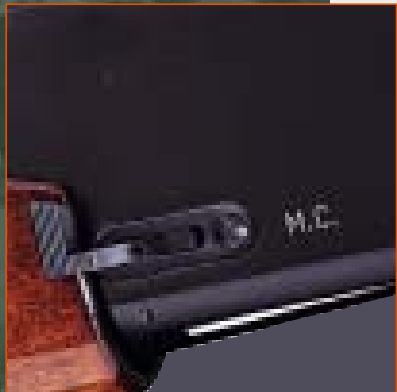
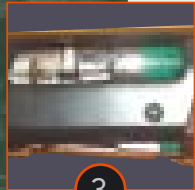
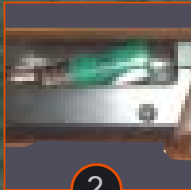
3. Exclusive advantages



- Speed loading (ultra rapid loading) : simplicity, loading rapidity, just one movement required to load. (3 new photos to show its operation)

EXCLUSIVE

The «Speed-loading» system allows you to load more quickly. With the breech in the rear-most position, simply slide a shell into the magazine and it is automatically sent to the chamber, ready to fire.



- Cut Off : Allows fast loading of the chambered cartridge.

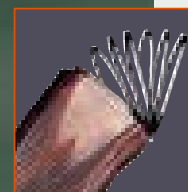
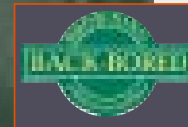
When engaged, this device is able to block the cartridges in the magazine so as to only load the cartridge located in the chamber. In the « ON » position it offers great safety when handling in the breech open position.

It also has the advantage of enabling you to keep the breech of your fusion open with cartridges in the magazine by engaging the cut-off and ejecting the cartridge contained in the chamber.

To quickly reload, release the cut-off and the breech will move forward to feed a new cartridge in the chamber.

- The Speed Loading & Cut Off association thus allows :
 - Fast loading
 - Quick replacement of the cartridge in the chamber
 - Reinforced safety with the breech open (Cut Off)
 - Instantaneous reloading by disabling the Cut Off.

4. Essential features



- Barrel and frame manufactured by the Fabrique Nationale (National Factory) in Herstal.
- Excellent balance and ergonomy.
- Ambidextrous safety devices, quick, easy adaptation.
- Hammer safety device exclusive to Browning, safer than simply a trigger safety device.
- Steel shot proofed at the Liège test bench
- "Back Bored" barrel. (see page30)
- Very high quality assembly and finish.
- In removable version total capacity of 5 cartridges.
- Hi-Viz foresight with a set of 7 additional foresights
- Adjustable stock because of 6 inserts which allow pitches and advantages to be adjusted depending on your requirements



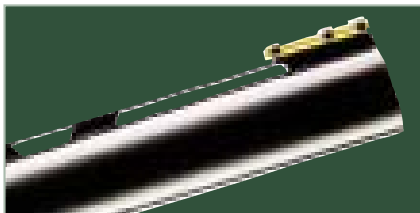
Fusion evolve II
Animal engravings and a nickeled frame are in the best possible taste and give a very special character to this gun which will be your favourite ally during your long hunting trips.

*Browning, the inventor of
the semi-automatic shotgun*


BROWNING
The Best There Is



Fusion Evolve II



Exceptional barrel

The Fusion Evolve's Back-Bored barrel and its new, ventilated rib which is silver-welded are synonymous with great rigidity. The advantage of this strength when firing is that the points of impact are perfectly consistent and regular. Your shot pattern isn't scattered.

B Y B R O W N I N G

MODEL	FUSION Evolve Standard	FUSION Evolve Elite	FUSION Evolve II
BARRELS			
Calibre	12 M	12 M	12 M
Chamber	76 mm	76 mm	76 mm
Length	610 - 660 - 710 - 760 mm	610 - 660 - 710 - 760 mm	660 - 710 - 760 mm
Chokes	Investor Plus	Investor Plus	Investor Plus
Top Rib	6 mm	6 mm	6 mm
STOCK (*)			
Length	370 mm	370 mm	370 mm
Drop at comb	35 mm	35 mm	35 mm
Drop at heel	57 mm	57 mm	57 mm
MAGAZINE			
Type	tubular aluminium	tubular aluminium	tubular aluminium
Capacity without reducer	4 (3 in 76 mm)	4 (3 in 76 mm)	4 (3 in 76 mm)
Capacity with reducer	2	2	2
TOTAL WEIGHT (*)	2,9 - 3 kg	2,9 - 3 kg	2,9 - 3 kg
FINISHING			
Receiver	anodized, black	anodized, black	Nickel
Wood	walnut, oil finished	walnut, oil finished - Grade 3	walnut, satin varnish
SPECIAL FEATURES			
	Light alloy receiver with magazine cut-off chrome-plated barrels - machined dovetails on top of receiver	Light alloy receiver with magazine cut-off chrome-plated barrels - machined dovetails on top of receiver	Light alloy receiver with magazine cut-off chrome-plated barrels - machined dovetails on top of receiver
ACCESSORIES			
	inletted swivel bases - Investor Plus mounted : 1/2 supplied : 1/4 - 3/4 - full - 6 inserts for stock adjustment Set of 6 interchangeable optical fibre foresights - Stock care oil	inletted swivel bases - Investor Plus mounted : 1/2 supplied : 1/4 - 3/4 - full - 6 inserts for stock adjustment Set of 6 interchangeable optical fibre foresights - Stock care oil	inletted swivel bases - Investor Plus mounted : 1/2 supplied : 1/4 - 3/4 - full - 6 inserts for stock adjustment Set of 6 interchangeable optical fibre foresights - Stock care oil

(*) Average values

fusion evolve

SEMI-AUTOMATIC SHOTGUNS

NEW
2005



Fusion Evolve Elite Cal 12 M
A dual tone frame with Browning markings associated with magnificent grade 3 walnut are the main features of this Elite version.

INVECTOR+
LONG CHASS



Fusion Evolve standard Cal 12 M
With all the Fusion Evolve family features, this standard version is characterised by its grade 2 gloss varnished walnut, A dual tone frame and its matt-finished barrel.

INVECTOR+
LONG CHASS



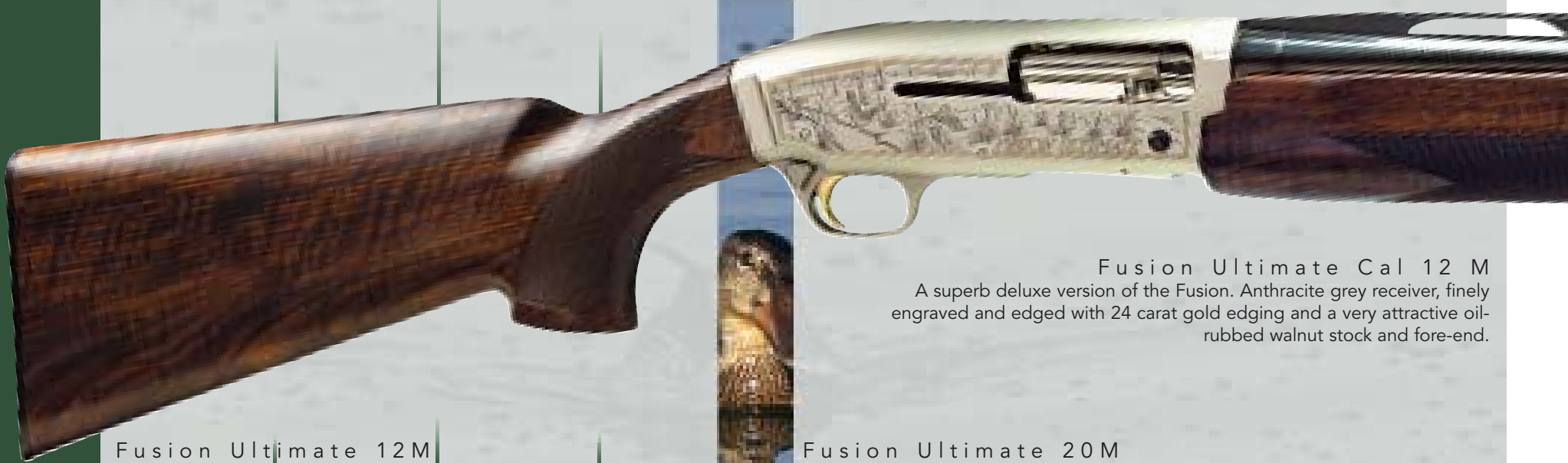
NEW
2005



Browning recommends
the use of ammunition by
Browning and Winchester

The most efficient shotgun in the field

FUSION H U N T I N G



Fusion Ultimate Cal 12 M
A superb deluxe version of the Fusion. Anthracite grey receiver, finely engraved and edged with 24 carat gold edging and a very attractive oil-rubbed walnut stock and fore-end.



3 6 - 3 7

Fusion Ultimate 12 M

Fusion Ultimate 20 M



MODEL	FUSION Ultimate 12 M	FUSION Slug	FUSION Ultimate 20 M	FUSION 20 M
BARRELS				
Calibre	12 M	12	20 M	20 M
Chamber	76 mm	76 mm	76 mm	76 mm
Length	660 - 710 - 760 mm	610 mm	660 - 710 mm	660 - 710 mm
Chokes	Invector Plus	Rifled	Invector Plus	Invector Plus
Top Rib	6 mm	Front and rear sight	6 mm	6 mm
STOCK (*)				
Length	370 mm	370 mm	365 mm	365 mm
Drop at comb	35 mm	35 mm (**)	36 mm	35 mm
Drop at heel	57 mm	57 mm (**)	60 mm	60 mm
MAGAZINE				
Type	tubular aluminium	tubular chrome	tubular aluminium	tubular aluminium
Capacity without reducer	4 (3 in 76 mm)	4 (3 in 76 mm)	4 (3 in 76 mm)	4 (3 in 76 mm)
Capacity with reducer (cart.70 mm)	2	2	2	2
TOTAL WEIGHT (*)	2,9 / 3 kg	3,1 kg	2,8 kg	2,8 kg
FINISHING				
Receiver	engraving, Ni, Anthracite grey	anodized, black varnish	engraving, Ni	anodized, black varnish
Wood	luxe walnut, oil finished	walnut, oil finished	luxe walnut, oil finished	walnut, oil finished
SPECIALFEATURES	Light alloy receiver with magazine cut-off chrome-plated barrels	Light alloy receiver with magazine cut-off - Chrome-plated barrels - Machined dovetails on top of receiver	Light alloy receiver with magazine cut-off chrome-plated barrels	Light alloy receiver with magazine cut-off chrome-plated barrels
ACCESSORIES	inletted swivel bases - Invector Plus mounted : 1/2 supplied : 1/4 - 3/4 - full - exterior 50 mm - 6 inserts for stock adjustment - Set of 6 interchangeable optical fibre foresights - Stock care oil	Mounted : head for front sling swivel Furnished: screw head for rear swivels and removable pair of rings - 2 spacers for adjusting stock height(**)	inletted swivel bases - Invector Plus mounted : 1/2 supplied : 1/4 - 3/4 - full - 3 inserts for stock adjustment Set of 6 interchangeable optical fibre foresights Stock care oil	inletted swivel bases - Invector Plus mounted : 1/2 supplied : 1/4 - 3/4 - full - 3 inserts for stock adjustment Set of 6 interchangeable optical fibre foresights Stock care oil

(*) Average values

(**)Average value with adjustable stock system (spacer n°2) • Spacer n°1 = 34-53 mm • Spacer n°3 = 36-61 mm

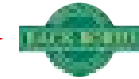


Browning recommends the use of ammunition by Browning and Winchester

FUSION

SEMI-AUTOMATIC SHOTGUNS

INVECTOR+
Long choke



Fusion Ultimate Cal 12 M



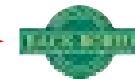
Fusion Slug Cal 12 M

Fusion Slug Cal 12 M
This special slug version is equipped with a chromed 3" barrel with a full-length rifled bore. The sighting system has been designed to provide accurate aiming in any weather and any lighting conditions. It includes an adjustable rear sight and an optical fibre front sight. The pitch of the stock is adjustable and the gun is supplied with a set of sling swivels.



Fusion Ultimate Cal 20 Magnum

INVECTOR+
Long choke



Fusion Ultimate Cal 20 Magnum

The Fusion 20 gauge also exists in a deluxe version, with a superb anthracite grey receiver edged in fine gold and a new engraving. The oil-rubbed walnut stock and fore end contribute to the superior quality of this gun.



Fusion Cal 20 M

INVECTOR+
Long choke



Fusion Cal 20 M

The Fusion range includes the Fusion 20M. In addition to the qualities of the 12 gauge, the Fusion 20M also provides lightness and ease of handling. The narrower receiver has been scaled to suit the gauge. The quality of the shot pattern is ensured by the 62 mm long Invector Plus chokes. The 3" chambering of this gun allows it to fire all 20 bore cartridges, regardless of length or load.

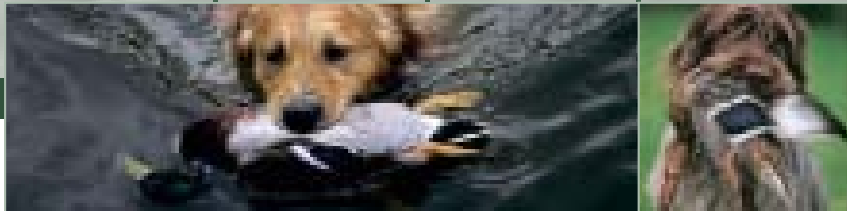
The most efficient shotgun in the field



Gold Camo Cal 12
New Mossy Oak® break up™
Continuing all of the features of the Gold Camo 3.5", this model offers the new Mossy Oak® Break Up™ film which guarantees you perfect imitation of the woodland.



3 8 - 3 9

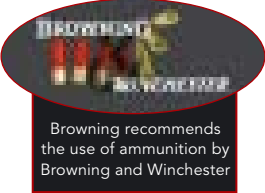


«Browning: the inventor
of the semi-automatic
shotgun»

B Y B R O W N I N G

MODEL	GOLD Hunter 3 1/2	GOLD LIGHT Cal 10
BARRELS		
Calibre	12 31/2"	10
Chamber	89 mm	89 mm
Length	710-760 mm	710 mm
Chokes	Invictor Plus	Invictor Plus
Ribs	ventilated 6 mm	ventilated 8 mm
STOCK (*)		
Length	362 mm	362 mm
Drop at comb	41 mm	41 mm
Drop at heel	45 mm	47 mm
MAGAZINE		
Type	tubular chrome	tubular chrome
Capacity without reducer	4 (3 in 76 mm)	4 (3 in 76 mm)
Capacity with reducer (cart.70 mm)	2	2
TOTAL WEIGHT (*)	3,4-3,6 kg	4,4 kg
FINISHING		
Receiver		
Wood		
SPECIAL FEATURES	Light alloy receiver with magazine cut-off - Chrome-plated barrels Invictor Plus models : 2 additional tubes and cross-shaped	
OPTIONS	CAMO model - Dura-TouchwrenComposite/CAMO - Dura-Touch	
ACCESSORIES	Mounted : head for front sling swivel Furnished: screw head for rear swivels and removable pair of rings	

(*) Average values
(**) Average value with adjustable stock system (spacer n°2) • Spacer n°1 = 34-53 mm • Spacer n°3 = 36-61 mm



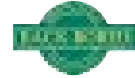
Browning recommends
the use of ammunition by
Browning and Winchester

GOLD

SEMI-AUTOMATIC SHOTGUNS



INVECTOR+
Long choke



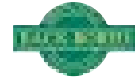
DURA-TOUCH
Armor Coating

3½"

Gold Camo Cal 12
New Mossy Oak® break up™



Gold Hunter Cal 12 3½" chamber

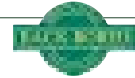


DURA-TOUCH
Armor Coating

3½"



Gold Camo Cal 12 New Shadow Grass™



DURA-TOUCH
Armor Coating

3½"



Gold Camo Cal 10

DURA-TOUCH
Armor Coating

Cal. 10

Also available with a
synthetic stock



Gold Hunter Cal 12
3½" chamber

This is a gun that is intended for those wishing to shoot heavy loads, and is ideal for hunting waterfowl and migratory birds. The Gold is a very versatile gun and is also able to shoot 2¾" cartridges of 32 g, allowing a very broad field of action.

Gold Camo Cal 12
New Shadow Grass™

An impressive gun under extreme conditions. The stock and fore-end, made of composite material, are extremely hard-wearing and totally unaffected by changes in temperature.

Gold Camo Cal 10
the ultimate power...

Intended above all for wildfowlers, the 10 gauge is without doubt the ideal solution in those regions requiring the use of steel shot. Our new light version retains a comfortable recoil (ventilated butt plate, anti-recoil).

The qualification of new products

- Before they are launched onto the market, Browning guns undergo numerous, very strict Browning internal tests. No product will be validated if it fails to completely fulfil the following requirements:

1. Operation and endurance tests :

- Minimum of 2 000 shots for rifles
- Minimum of 5 000 shots for hunting shotguns
- Minimum of 10 000 shots for sports shotguns
- Test conditions: the gun is cooled down every 50 shots and cleaned every 500 shots
- The full range of cartridges of different makes is used.
- No part breakage is tolerated.
- Once the test has been completed, none of the parts should be excessively worn.



2. Tests in adverse conditions.

- The gun should operate at extreme temperatures : from -30°C to +50°C

3. Torture tests :

All of these torture tests are carried out in extreme conditions that greatly exceed those of the conventional C.I.P. standards. Browning guns' legendary solidity and reliability are largely due to them passing all of these tests.

- Overload tests for all guns
- Obstruction tests for rifles
- Safety tests : drop tests for all guns

100% systematic inspection of mass produced guns

Browning's extremely stringent quality checks impose a systematic inspection of each serial gun which is screened during numerous checks and tests.

1. Gun checks

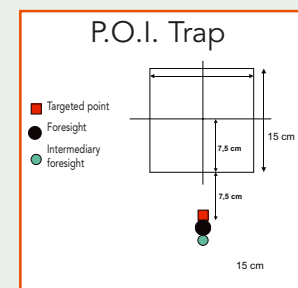
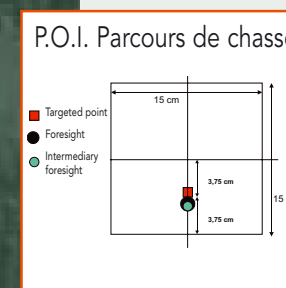
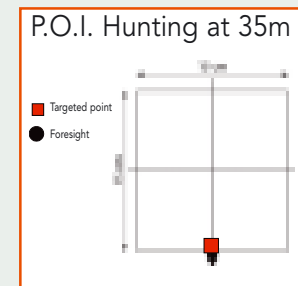
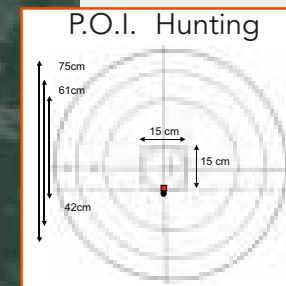
- Visual inspection of each product : gun + packaging
- Systematic measuring of certain points : headspace, chamber dimensions, weight, specific dimensions...

2. Gun tests

- Manual operation tests.
- Shooting tests : operation and accuracy.

3. Accuracy tests:

- For rifles: very precise check on shot patterns.
- For shotguns:
 - P.O.I. (Point Of Impact) test which is the shot pattern's average point or centre of gravity.
 - This test is carried out at 35 m with different points of aim depending on the product's family and therefore its use:



- For under-and-over shotguns, the maximum difference between 2 shot patterns' centres of gravity should not exceed 10 cm with a convergence set at 35m.
- Systematic check on the quality of the lead shot patterns using computerised analysis to guarantee operation and extreme reliability.

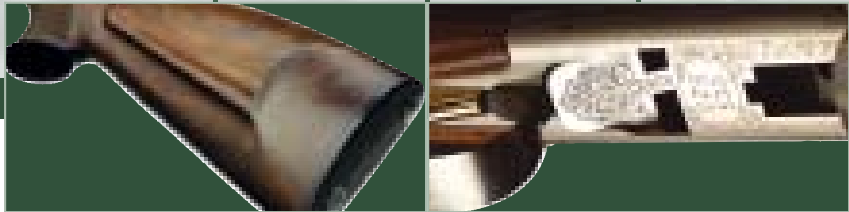


CCS 525

Browning has been the leading producer of express under and over rifles for decades. With the introduction of the CCS 525 in the 525 range, Browning wanted to provide the demanding hunter with a gun that is attractive, while at the same time guaranteeing flawless operation and unequalled accuracy, and that can be easily adjusted to accept the different types of cartridge available on the market.



4 2 - 4 3

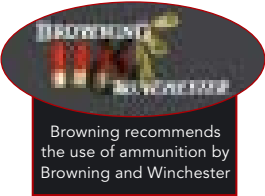


B Y B R O W N I N G

- Tartan chequering.
- Battue strip which facilitates sight assembly.
- 56 cm barrels equipped with an exclusive convergence system : Easy, reliable adjustment of your weapon's accuracy depending on the ammunition or the sight used.

MODEL	CCS 525
BARRELS	
Calibre	8 x 57 JRS
	9,3 x 74 R
	30R Blaser
Length	560 mm
SIGHT	
Frontsight	Fibre optic
Rearsight	battle Rib
STOCK (*)	Hog's back
	the Bavarian cheek piece
Length	370 mm
FORE-END	Tulip
TOTAL WEIGHT (*)	3,1 kg
FINISHING	
Action frame	greyed
Wood	satin varnish
SPECIAL FEATURES	animal engravings

(*) Average values



Browning recommends the use of ammunition by Browning and Winchester

CCS 525

EXPRESS RIFLES

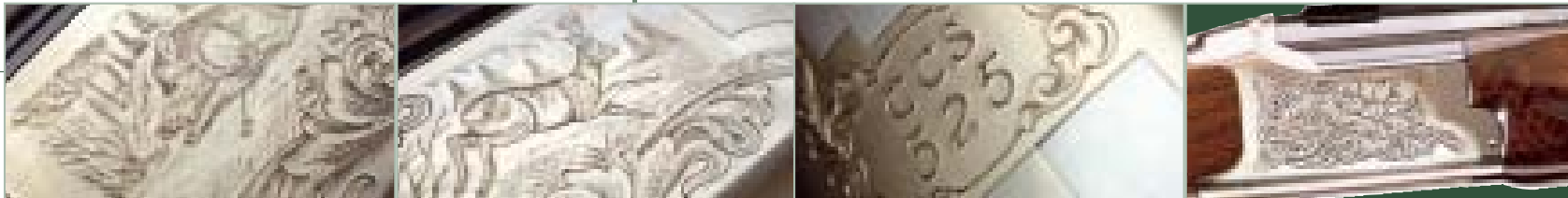
Browning has reinvented the Express Rifle



New animal engraving
Alloy action frame with steel insert, a
balanced and robust gauge



Cal 30R Blaser



Browning has reinvented the Express Rifle

The barrels, the essential part of this gun, are both traditional and original. A spacer on the upper barrel ensures the accuracy of the vertical convergence of the barrels, while lateral convergence is ensured by the design of the barrel itself, which incorporates a unique «Cradle» strip. Once the ammunition has been chosen, a spacer ring is recommended and inserted securely under the foresight on the upper barrel, guaranteeing unequalled accuracy. (*).

The weight and balance are perfect for current hunting conditions.

The action frame has been strengthened by means of high strength stainless steel inserts.

Very special attention has been paid to every detail of this gun: a «hog's back» stock with a Bavarian cheek piece, an accentuated tulip-shaped forearm for greater elegance, a fluorescent optical fibre foresight and a traditional battue rib

allowing a scope to be mounted by a gunsmith in minimum time. The animal engravings with which it is decorated make this a very special and unique rifle.

(*) It is essential that this operation is carried out by your gunsmith.

SEMI-AUTOMATIC RIFLES

- THE UNDISPUTED LEADER, BROWNING IS THE SEMI-AUTOMATIC RIFLE SPECIALIST.
- 40 YEARS' EXPERIENCE, THE FIRST BAR WAS LAUNCHED IN 1966.
- OVER 1.000.000 BARS SOLD IN THE WORLD

In 1966, Browning launched the BAR (Browning Automatic Rifle) that was to quickly become THE market reference. In spite of severe but often ineffective, competition, the BAR became the leading semi-automatic rifle in Europe. In 2002, in close collaboration with Winchester, Browning developed the WSM (Winchester Short Magnum) calibres, combining the power and the accuracy of classic «magnum» calibres with a smaller cartridge.

In 2003, Browning is launching the *ShortTrac*, the first semi-automatic rifle on the market to be developed specially for WSM calibres. The smaller dimensions of the WSM cartridges have made it possible to create a lightweight, compact gun that guarantees «Magnum» performance. The *ShortTrac* incorporates all the experience of the BAR gained by our Research and Development departments over a period of almost 40 years for your maximum satisfaction.



1. The most reliable rifle on the market, 40 years' experience

- Chromed chamber and gas cylinder, do not rust and make ammunition extraction easier.
- Gas plug can be adjusted to optimise operation for a certain type of cartridge.
- Welded gas cylinder, perfectly watertight.
- Breech damping system, reduces mechanical parts' wear and stress.
- The regulating system's floating mass ensures regular supply and more reliability.

2. Great accuracy



- Locking occurs in the barrel by means of 7 lugs which engage in an extremely rigid way. This gives excellent shooting accuracy and the possibility of firing magnum cartridges.
- One piece barrel: better rigidity than bound barrels.
- Hammered barrel manufactured by the Fabrique Nationale (National Factory) in Herstal, a guarantee of quality.
- The barrel is breeched in the frame which gives great rigidity.



The best selling semi-automatic rifle in the world.

3. The widest, most comprehensive range

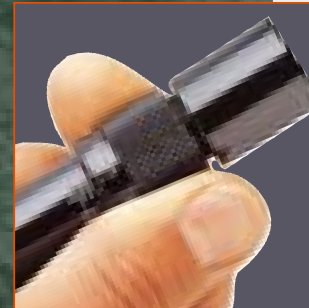
- 10 models, 12 calibres



- New WSM : 270, 7mm & 300

4. Essential features

- Very high quality finish and assembly.
- Reversible safety device for left-handed users.

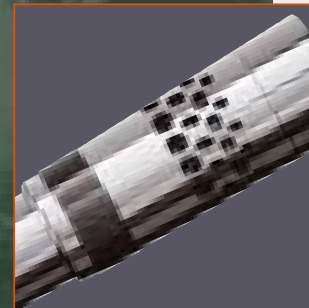


- Exclusive Browning B.O.S.S (Ballistic Optimizing Shooting System) system: Improved accuracy

The BOSS™ system allows the rifle to be quickly adjusted to the desired load. Each barrel equipped with the BOSS™ is marked with 10 incremental markings, and a table of average settings is supplied for each calibre.

Reduced recoil

The BOSS™ system allows the bullet to leave the barrel at the ideal moment, i.e. in the «peak» or the «valley» of the vibration wave when the muzzle is virtually motionless.



- Height- and side-adjustable stock on Short & LongTrac using 5 inserts.



- Innovative design
- Recoil sensation much softer than with bolt action rifles.

HUNTING

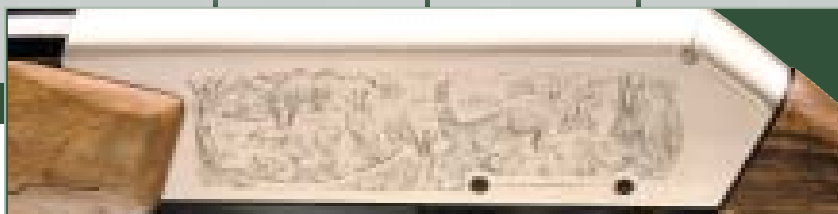


ShortTrac / LongTrac
Eclipse

A first for this Eclipse ShortTrac and LongTrac finish whose nickeled frame is decorated with a magnificent hunting scene engraving and selected oil-rubbed walnut.

BROWNING
The Best There Is

4 6 - 4 7



ShortTrac / LongTrac Eclipse

BY BROWNING

LongTrac ShortTrac



ShortTrac
Specially designed for the
new "Winchester Short Magnum"
calibres

LongTrac
Specially designed for
conventional calibres

MODEL	Long Trac Standard	Long Trac Elite	Long Trac Eclipse	Short Trac Standard	Short Trac Elite	Short Trac Eclipse
BARRELS						
Calibre	30-06 - 300 WM 7 mm RM	30-06 - 300 WM - 7 x 64	30-06 - 300 WM 7 mm RM	270 WSM - 7 mm WSM 300 WSM - 308 Win	270 WSM - 7 mm WSM 300 WSM	270 WSM - 7 mm WSM 300 WSM
Length	510 mm	510 mm	510 mm	510 mm	510 mm	510 mm
SIGHTS						
Frontsight	Adjustable fibre optic	Adjustable fibre optic	Adjustable fibre optic	Adjustable fibre optic	Adjustable fibre optic	Adjustable fibre optic
Rearsight	Adjustable battue rib	Adjustable battue rib	Adjustable battue rib	Adjustable battue rib	Adjustable battue rib	Adjustable battue rib
STOCK						
Length	351 mm	351 mm	351 mm	351 mm	351 mm	351 mm
MAGAZINE						
Type	removable magazine**	removable magazine**	removable magazine**	removable magazine**	removable magazine**	removable magazine**
Capacity	4 or 2 (***)	4 or 2 (***)	4 or 2 (***)	4 (308 Win) or 2 (WSM)***	2	2
TOTAL WEIGHT*	3,25 kg	3,25 kg	3,25 kg	3,25 kg	3,25 kg	3,25 kg
FINISHING						
Receiver	light alloy	light alloy	light alloy	light alloy	light alloy	light alloy
Wood	oil finished	oil finished	oil finished	satin varnish	satin varnish	satin varnish
SPECIALFEATURES	4 threaded holes for scope mounting	4 threaded holes for scope mounting	4 threaded holes for scope mounting	4 threaded holes for scope mounting	4 threaded holes for scope mounting	4 threaded holes for scope mounting
ACCESSORIES	6 spacers for adjusting stock height	6 spacers for adjusting stock height	6 spacers for adjusting stock height	6 spacers for adjusting stock height	6 spacers for adjusting stock height	6 spacers for adjusting stock height

(*) Average values

(**) Or fixed according to local legislation

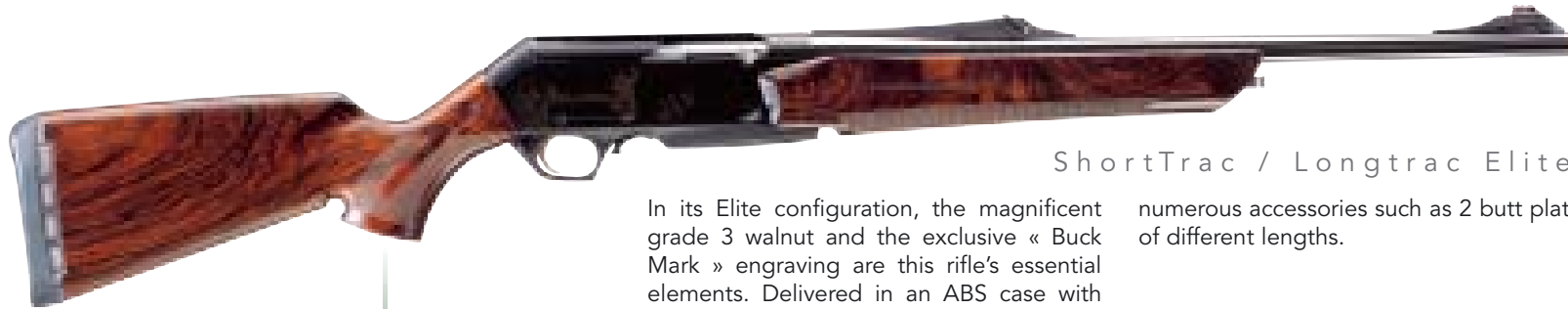
(***) According to local legislation



Browning recommends
the use of ammunition by
Browning and Winchester

ShortTrac / LongTrac

SEMI-AUTOMATIC RIFLES



ShortTrac / Longtrac Elite

In its Elite configuration, the magnificent grade 3 walnut and the exclusive « Buck Mark » engraving are this rifle's essential elements. Delivered in an ABS case with

numerous accessories such as 2 butt plates of different lengths.



Drop-down magazine

Drop-down magazine set



ShortTrac / Longtrac Standard

Here in standard version, the ShortTrac was the first semi-automatic rifle on the market developed specifically for Winchester Short Magnum calibres. As for the LongTrac it

offers conventional calibres whilst adopting the same innovative design.

BAR

H U N T I N G



9,3x62

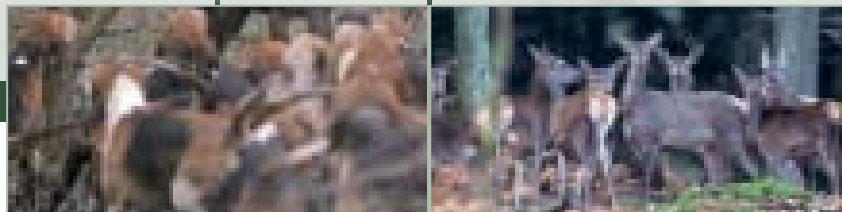
Bar Evolve 9,3x62 & 270Win

The shaped Monte Carlo stock, the more marked pistol grip and the narrower tulip fore-end will ensure excellent handling and incomparable comfort.

Particular care has also been taken in the selection and finish of the wood, most particularly the magnificent «Scottish» chequering.



4 8 - 4 9



*The best known
semi-automatic rifle in
the world*

B Y B R O W N I N G

MODEL	BAR Evolve	BAR Light Stalker	BAR Light Camo	BAR Light Affût
BARRELS				
Length	510 mm	510 mm	510 mm	550 mm
Calibre	(1)	(2)	(3)	(3)
SIGHTS				
Frontsight	red fibre optic	red fibre optic	red fibre optic	front bead with foresight protection
Rearsight	adjustable battue rib	Adjustable battue rib	Adjustable battue rib	
STOCK				
Length	351 mm	349 mm	349 mm	351 mm
Drop at comb	40,5 mm	40,5 mm	40,5 mm	40,5 mm
Drop at heel	49 mm	49 mm	49 mm	49 mm
MAGAZINE				
Type	r e m o v a b l e m a g a z i n e (* *)			
Capacity Std	4 or 2 (***)	4 or 2 (***)	4 or 2 (***)	4 or 2 (***)
Capacity Mag	3 or 2 (***)	2	2	3 or 2 (***)
TOTAL WEIGHT (*) STD	3,15 kg	3,15 Kg	3,15 Kg	3,15 kg
TOTAL WEIGHT (*) MAG	3,35 kg	3,35 kg	3,35 kg	3,35 kg
FINISHING				
Receiver	light alloy	light alloy, anodized black	light alloy, anodized black	light alloy anodized black
	grey receiver	satin varnish	satin varnish	satin varnish walnut satin
Wood	walnut oil finished	composite + Dura Touch	Camo + Dura Touch	varnish
SPECIAL FEATURES				
	4 threaded holes for scope mounting			
ACCESSORIES				
	Mounted : screw head for sling - Furnished : pair of removable sling swivels			
OPTIONS				
	Affût model available			

- (1) 270 Win, 9,3x62
(2) 30-06 Sprg, .300 Win Mag, 7 mm
Rem Mag, 338WM
(3) 30-06 Sprg, 300 WM
(4) 30-06 Sprg, 300WM, 308 Win.
(*) Average values
(**) Or fixed according to local legis-
lation
(***) According to local legislation



BAR LIGHT

SEMI-AUTOMATIC RIFLES



Bar Light Camo



DURA-TOUCH
Armor Coating



Bar Light Stalker

DURA-TOUCH
Armor Coating



Bar Light Affût

Bar Light Camo
Camo New Mossy Oak® Break Up™ version of the very well-known Bar Light Battue, this weapon will ensure complete discretion when hunting big game in intense vegetation.

Bar Light Stalker
The Bar light requires no introduction. This new version, with its composite stock and fore-end is virtually indestructible. When hunting in the undergrowth, it will be less likely to damage.

Bar Light Affût
This model is designed to provide still hunters the pleasure of a light, reliable and extremely accurate gun.

DUALIS
BLR



BAR ACIER
SEMI-AUTOMATIC RIFLES



5 0 - 5 1

Bar Acier Battue
With its more compact barrel, its battue type rib and its fluorescent fore sight, this gun is exceptionally effective and easy to handle in battue or stalking situations.

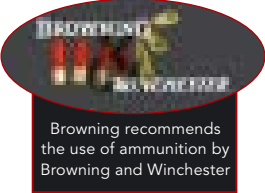
BAR BOSS™ «Affut» system
The addition of the BOSS™ system produces two particularly interesting effects : reduced recoil (in the region of 30 to 50 %) and improved accuracy.
The performance of the BAR is thus improved when using a scope or firing long range shots.

BAR Acier Affût
This version is fitted with a vertically and horizontally adjustable rear sight The fine metal foresight ensures a perfect accuracy of aim.

B Y B R O W N I N G

MODEL	BAR ACIER Battue	BAR ACIER Affût	BLR Lightning Affût	BLR Lightning Battue
BARRELS				
Length	560 mm	(1) 560 mm - (2) 600 mm	(4) 510 mm - (5) 560 mm	470 mm
Calibre	(3)	(1) (2)	(4) (5)	300 WM
Rearsight	battue rib	LPA	adjustable	battue rib
Frontsight	red translucent	front bead with foresight protection	gold plated w/ base plate	Fluorescent
STOCK (*)				
Length	351 mm	351 mm	362 mm	362 mm
Drop at comb	40,5 mm	42,5 mm	25 mm	25 mm
Drop at heel	49 mm	52 mm	25 mm	25 mm
MAGAZINE				
Type			removable magazine	removable magazine
Capacity Std	4 ou 2 (**)	4 ou 2 (**)	4 ou 2 (**)	-
Capacity Mag	3 ou 2 (**)	3 ou 2 (**)	3 ou 2 (**)	3 ou 2 (**)
TOTAL WEIGHT (*)	3,5 kg -Mag : 3,7 kg	3,5 kg -Mag : 3,7 kg	2,95 kg - Mag : 3,3 kg	3,4 kg
FINISHING				
Receiver	blued steel	blued steel	black anodized	black anodized
Wood	walnut, satin varnish		gloss varnished	gloss varnished
SPECIAL FEATURES			Folding down hammer in half-cock position	
ACCESSORIES				
OPTIONS				

(1) .243 Win, -30-06 Sprg, 308 Win
(2) .300 Win Mag, 7 mm Rem Mag, .338 Win Mag
(3) .300 Win Mag, .338 Win Mag, .270 Win, 30-06 Sprg
(4) 243Win, 308Win, 450 Marlin
(5) 270Win, 30-06, 270WSM, 300WSM
(*) Average values
(**) According to local legislation



DUALIS

REPEATING RIFLES



DUALIS Battue

A perfect alternative to the semi-automatic, Totally different from normal pump-action rifles, the Dualis reloads in record time. The fore-end moves along 2 axis: you draw it towards you, and it moves backwards and downwards, forming a circular motion and nestling comfortably under the magazine.

No visible cams, a silent action and a superb, highly fluid line. This gun is extremely effective with its floating cold-hammered (FN Herstal made) barrel, its drop-down magazine and its modern optical fibre foresight.

Drop-down magazine. It's asymmetric design allows extremely quick and accurate pointing.



MODEL	DUALIS
BARRELS	
Length	510 mm
Calibre	.300 WM, 30-06 Sprg, 7 RM, .270 Win, .308 Win
Rearsight	Adjustable battue rib
Frontsight	red fibre optic
STOCK (*)	
Length	351 mm
Drop at comb	48 mm
Drop at heel	72 mm
MAGAZINE	
Type	removable magazine
Capacity Std	4
Capacity Mag	3
TOTAL WEIGHT (*)	3,2 kg - Mag : 3,4 kg
FINISHING	
Receiver	light alloy, anodized
Wood	walnut satin varnish
SPECIAL FEATURES	
	4 threaded holes for scope mounting
ACCESSORIES	
	Mounted : screw head for sling
	Furnished : pair of removable sling swivels

(*) Average values

Absolute speed

BLR

REPEATING RIFLES



BLR

A classic look for this BLR model 81 which offers increased manoeuvrability thanks to its lightened aluminium frame and its semi-pistol stock. Its various versions allow you to shoot conventional calibres as well as magnum calibres. Furthermore the BLR is characterised by its extremely fluid operation, its safe use, its drop-down magazine and its rotating bolt.



ACERA

H U N T I N G



5 2 - 5 3



Walnut «hog's back» stock. The Bavarian cheek piece adds to its already good looks.



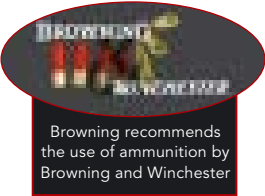
The seven lug rotating bolt engages directly into the barrel extension, making it particularly strong and reliable.

Drop-down magazine for speed and ease of loading.

B Y B R O W N I N G

MODEL	ACERA Battue	ACERA Affût
BARRELS		
Length	510 mm	580 mm
Calibre	270 Win, 7x64, 7 RM, 30-06 Sprg, 300 WM	300 WM, 30-06, 7X64 270 Win
Rearsight	Adjustable battue rib	LPA adjustable
Frontsight	red fibre optic	metal
STOCK (*)		
	Hog's back - The Bavarian cheek piece	Hog's back - The Bavarian cheek piece
Length	350 mm	350 mm
Drop at comb	48 mm	48 mm
Drop at heel	80 mm	80 mm
MAGAZINE		
Type	drop down	drop down
Capacity	standard : 4 magnum : 3	standard : 4 magnum : 3
TOTAL WEIGHT (*)		
	3,1 à 3,2 kg	3,1 à 3,2 kg
FINISHING		
Receiver	light alloy, anodized	light alloy, anodized
Wood	walnut oil finished	walnut oil finished
SPECIAL FEATURES		
	Furnished with inletted swivel bases 4 threaded holes for scope mounting	Furnished with inletted swivel bases 4 threaded holes for scope mounting

(*) Average values



Browning recommends the use of ammunition by Browning and Winchester

ACERA

STRAIGHT-PULL ACTION RIFLES



Acera

The only bolt action rifle in the world to have its breech block completely enclosed within the receiver



Acera Affût

Acera

With the Acera, reloading simply involves a straight-pull action: a straight back-and-forth movement along the line of the gun is all that is required. But its other major advantage is that the bolt is completely enclosed in the receiver. There is therefore no risk of receiving the bolt in the eye: the hunter is thus able to keep the target in his sights while reloading. Available in calibre 270 win, 7X64, 7RM, 30.06 and 300 WM. Comes in a black ABS carry case.

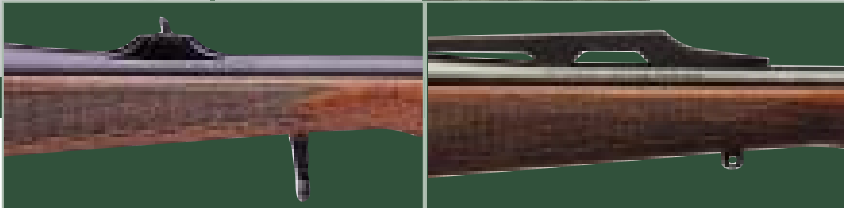
Acera Affût

Designed more for walk-up or still hunting, this new version has a 58 cm barrel with the appropriate sights. Easy scope mounting thanks to the steel inserts on the breech box. Comes in a black ABS carry case.

A-BOLT
EUROBOLT



5 4 - 5 5



Eurobolt
Interchangeable Battue-type rib and rearsight.

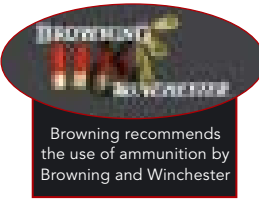
Without doubt the most versatile rifle on the market. Indeed, the Eurobolt is unique in that it is provided with interchangeable sights. The gun can thus be easily modified from a still hunting rifle (with a rear leaf sight) into a battue rifle (with a quarter rib). The trigger has a «stetcher» (set trigger) mechanism, allowing the gun to be fired with a very light trigger pull (hair trigger) for very accurate shots. The Bavarian «hog's back» stock is always perfect, both for sighting with open sites and with a scope.

Supplied with 2 sights: affect rearsight + battue rib: to be mounted according to choice.

B Y B R O W N I N G

	EUROBOLT	A-BOLT Médailon	A-BOLT Stainless Stalker	A-Bolt Composite Stalker	A-BOLT Varmint Stalker	A-Bolt Mountain Titanium
MODEL						
BARRELS						
Length	560 mm	(**)	(**)	(**)	(**)	(**)
Calibre	(1)	(2)	(3)	(4)	(5)	(6)
Rearsight	Affût + Battue	-	-	-	-	-
Frontsight	adjustable	-	-	-	-	-
STOCK (*)						
Length	368 mm	347 mm	349 mm	349 mm	349 mm	349 mm
Drop at comb	45 mm	19 mm	19 mm	19 mm	19 mm	19 mm
Drop at heel	70 mm	29 mm	29 mm	29 mm	29 mm	29 mm
MAGAZINE						
Type	removable magazine	removable magazine	removable magazine	removable magazine	removable magazine	removable magazine
Capacity	3 cal Mag.	3 cal Mag. (***)	3 cal Mag. (***)	3 cal Mag. (***)	3 cal Mag.	3 cal Mag.
	4 other cal.	4 other cal.	4 other cal.	4 other cal.	4 other cal.	4 other cal.
TOTAL WEIGHT (*)	3,2 kg	2,9 kg	2,9 kg	2,9 kg	2,9 kg	2,5 kg
FINISHING						
interchangeable sights						
RECEIVER						
Receiver	dull blued	dull blued	stainless steel	dull blued	dull blued	Titanium & stainless steel
Wood	walnut oil finished	walnut, oiled	composite	composite + Dura Touch	composite	camo + Dura Touch
SPECIAL FEATURES					Semi-heavy barrel	Receiver 100% titanium
ACCESSORIES						
removable swivel		removable swivel	removable swivel	removable swivel	removable swivel	removable swivel
			available in left-handed version			

(*) Average values
(**) 560 mm : 222 Rem, 223 Rem, 22-250 Rem, 243 Win, 308 Win, 30-06, 223 WSSM, 243 WSSM
585 mm : 270 WSM, 300 WSM
(***) 5 en 223 Rem & 222 Rem
(1) 7x64, 30-06, 7RM, 270 WSM, 300 WSM, 243 WSSM
(2) 222 Rem, 223 Rem, 22-250 Rem, 243Win, 30-06, 270 WSM, 300 WSM, 223 WSSM, 243 WSSM
(3) 223 Rem, 243 Win, 30-06, 308 Win, 270 WSM, 300 WSM, 223 WSSM, 243 WSSM
(4) 222 Rem, 243 Win, 308 Win, 30-06, 300 WSM, 243 WSSM
(5) 22-250 Rem, 243 WSSM
(6) 243 WSSM, 270 WSM



EUROBOLT - A·BOLT

REPEATING RIFLES



A-Bolt medaillon



A-Bolt Composite Stalker



A-Bolt Stainless Stalker



A-Bolt Mountain Titanium



2,5 Kg



A-Bolt Varmint Stalker



Adjustable trigger



A - Bolt Medaillon
A reduced 60° bolt action makes reloading the A-Bolt rifle quicker and easier, especially with a scope mounted. It's push button safety catch is ideally located at the top of the grip. Available in small calibres, it is ideally suited to hunting vermin, but will appeal to the most demanding shooters.

A-Bolt Composite Stalker
Sharing the same characteristics as the rest of the A-Bolt range, this new Stalker version, with its composite stock, will withstand the most severe conditions. It will also meet every expectation of both hunters and target shooters.

A-Bolt Stainless Stalker
Ideal for target shooting, vermin or game, the stainless stalker seduces as much by the intrinsic qualities of its materials as by its looks. Its composite fibreglass/graphite stock, together with its stainless steel barrel and action make it a gun that is perfectly suited to all kinds of weather.

A-Bolt Mountain Titanium
Everything has been studied to make this rifle a genuine featherweight : 100% Titanium casing, a breech made of composite materials, a super light stock specifically developed by Bell and Carlson which is the result of a combination of composite materials and fibreglass. A Pachmayr Decelerator butt plate softens the recoil.

A-Bolt Varmint Stalker
With its semi-heavy barrel and its special highly ergonomic grip, the A-Bolt Varmint Stalker rifle will be perfect for faraway shots which require extreme accuracy

OPTALENS S C O P E S



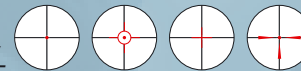
The Optasight is one of the very latest generation of sights based on the principle of a projected reticule. This revolutionary sight does not have its equal on the market: it incorporates a sensor that measures the ambient light level and adjusts the brightness of the reticule accordingly. The constant need to manually adjust the brightness when passing from bright sunshine to shade is now a thing of the past. The Optasight provides a choice between four reticules, simply by operating a selector knob. It is equipped with a large window (22 x 28mm), providing the perfect compromise between a wide field of vision, lightness and compactness.

(Powered by a CR 2032 lithium battery) – Guaranteed 3 years.



QUICK,
ACCURATE, PERFECT

OPTASIGHT



Model	Optasight
Size (mm)	Long : 80 - L : 36 - H : 55
Weight (g)	112
Window	22 x 28
Magnification	1
Reticule	⊕⊕⊕⊕
Autonomy (H)	60-80

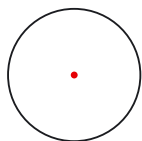
- 1• Multi-coat Anti-reflection and anti-scratch treatment.
- 2• Location of CR2032 battery
- 3• Vertical and sideways reticule adjustment
- 4• Quick, easy assembly.
- 5• Self regulating brightness sensor
- 6• Reticule brightness adjustment thumbwheels (choice of 7)
- 7• Reticule selector (choice of 4)
- 8• After adjustment on the target, firmly tighten this screw to avoid any ill-timed shifting of the reticule.



5 6 - 5 7

Browning, the world's leading gun producer wanted to pass on the benefit of its experience of hunting and target shooting by developing the "Optalens" scope range. This range has been designed, down to its minutest details, to meet your highest standards. All Optalens scopes are guaranteed 30 years*.

* Except Optapoint and Optasight.



Red Point



B Y B R O W N I N G

Model	Optapoint
Magnification	1
Tube (mm)	33
Reticule	Point
Twilight Factors	-
Exit pupil diameter	-
Field of vision (in m at 100m)	-
Length	119

THE SYMBOL OF SPEED

OPTAPOINT

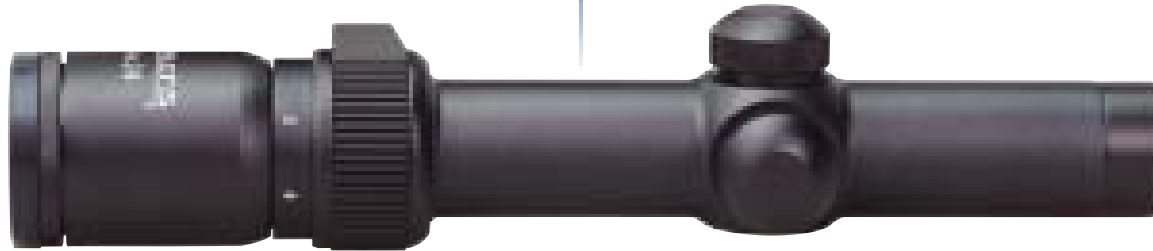
Optalens Optapoint

This illuminated dot scope provides 1x magnification, which is ideal for quick firing. The brightness can be adjusted and the definition of the dot is always perfect (no edge iridescence).

The 33 mm diameter tube gives a vast field of vision. This model comes with an adjustable polarising filter, a lithium/manganese battery and a mount that is compatible with 16.5 mm wide rails. The Optapoint is guaranteed for 1 year.

OPTALENS

IDEAL QUALITIES FOR BATTUE HUNTING



1-4 x 24

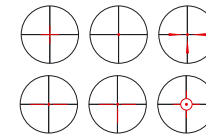


reticule 4

PERFECT DEFINITION UNDER ALL CIRCUMSTANCES



1-4 x 26 MRE

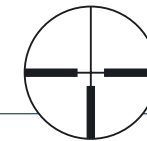


reticules

THE UNIVERSAL



1,5-6 x 42



reticule 4

FOR USE IN ANY WEATHER, UNDER ALL CIRCUMSTANCES



1,5-6 x 42 IS



reticule 4 IS

Model	1,5-6 x 42	1-4 x 24	1-4 x 26 MRE	1,5-6 x 42 IS
Magnification	1,5-6	1-4	1-4	1,5-6
Tube (mm)	30	30	30	30
Reticule	4	4	MIS	4 IS
Twilight Factors	7,9-15,9	4,9-9,8	5-10,2	7,9-15,9
Exit pupil diameter	28-7	24-5	26-6,5	28-7
Field of vision (in m at 100m)	21,1-5,2	28,5-8	25,4-8	21,1-5,2
Length	295	253	250	294

Optalens Model 1-4 x 24

Battue hunting requires the use of a scope having very specific optical qualities. The 1-4 x 24 scope (total length 263 mm), with its qualities of lightness and maneuverability, is the perfect answer. It combines a wide field of vision with a reticule No. 4 for rapid firing

The care taken in its manufacture and the multi-coat treatment of the lens ensures perfect brightness in even the most unfavourable conditions. Its one-piece alloy body also makes it particularly robust.

Optalens Model 1-4 x 26 MRE

For firing quickly on the hop from a path, in scrub land or in foggy conditions, an illuminated reticule is just the solution for a battue hunter.

The 1-4 x 26 scope offers a choice of 6 easily selectable reticules, simply by operating the selector. The adjustable brightness guarantees perfect definition under all circumstances. Particularly light, compact and genuinely strong, this scope is the ideal companion for all your hunting trips.

Optalens Model 1,5-6 x 42

A virtually universal scope, the 1.5-6 x 42 combines a short length (only 298 mm), a large magnification range (1.5 to 6 times) and a reticule 4. It thus constitutes a high performance, extremely versatile scope. Like all Optalens scopes, its inside is filled with nitrogen to prevent fogging due to changing temperatures.

Optalens Model 1,5-6 x 42 IS

The disconnectable illuminated reticule of the 1.5-6 x 42 IS is ideal for sighting the target when shooting in poor light (twilight) or where the shot requires to be fired extremely quickly. The red dot at the center of the very fine reticule No. 4, with its well defined edge, is combined with a brightness adjustment system to avoid excessive pupil dilation.

Each Optalens scope comes with protective lens caps

Each Optalens scope comes in a recyclable cardboard box.

Each scope comes with a set of removable folding lens caps



FOR HUNTING IN THE MOUNTAINS

3-9 x 40

reticule 14



ONE OF THE BEST STALKING SCOPES

3-12 x 56

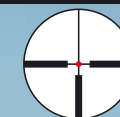
reticule 14



A MUST IN POOR LIGHT CONDITIONS

3-12 x 56 IS

reticule 4 IS



5 8 - 5 9

Model	3-9 x 40	3-12 x 56	3-12 x 56 IS
Magnification	3-9	3-12	3-12
Tube (mm)	30	30	30
Reticule	14	14	4 IS
Twilight Factors	10,9-18,9	12,9-25,9	12,9-25,9
Exit pupil diameter	13,3-4,5	18,7-4,7	18,7-4,7
Field of vision (in m at 100m)	11,3-3,3	9-2,3	9-2,3
Length	327	361	362

B Y B R O W N I N G

Optalens Modele 3-9 x 40

The combination of a large magnification range (from 3 to 9 times) and a lens diameter of 40 mm make this an ideal scope for use in the mountains, and more generally in all cases where the key advantage is a compromise between weight and magnification. The reticule No. 14 is really perfect for long range shots. The little dot situated beneath the intersection of the cross hairs allows the point of impact to be determined, and thus compensates for the trajectory of the projectile. The very high quality multi-coat treatment and the aperture diameter (which goes up to 13.3 mm) make this a very effective scope for selective shooting. It also ensures perfect colour rendition.

Optalens Modele 3-12 x 56

Designed for still hunting, from a stand, the 3-12 x 56 scope provides maximum visual comfort. The very high quality multi-coat lens treatment makes this one of the very best scopes in the world where colour transmission and restitution of form are concerned. With twilight factors from 12.9 to 25.9, your scope remains perfectly useable, even under conditions of very poor or low light. The reticule No. 14 (with an additional dot beneath the intersection) is ideal. The scope is assembled with meticulous care in a clean room and is filled with nitrogen to avoid all risk of fogging or sensitivity to variations in temperature.

Optalens Modele 3-12 x 56 IS

Perfectly adapted to still hunting, this illuminated reticule version of the 3-12 x 56 is at its best at twilight or in very bad light. The very fine red dot, with its very well defined edge, ensures unequalled efficiency. Its meticulous construction, its one-piece alloy housing (of total length not exceeding 377 mm) and silent fine adjustment screws make this an extremely strong scope that is guaranteed for 30 years, like the whole of the OPTALENS range.



reticule
30/30



reticule
30/30



reticule
30/30



reticule
30/30



reticule
30/30



reticule
30/30



Optalens Initial 3-7 x 20
With its 3/4" body and its integrated 11 mm rail compatible mounting, it is the perfect scope for an air gun or a .22 rifle.

Optalens Initial 4 x 32
The most widely used magnification for medium distance shots (75m). Attractive satin finish, 1" body.

Optalens Initial 6 x 40
The key feature is that the exit diameter is 40 mm, allowing a higher twilight factor. Multi-coat anti-reflection treatment and nitrogen filled body.

Optalens Initial 3-9 x 40
A very wide magnification range (3 to 9 times), the zoom is accurate, the thumbwheel perfectly adjusted. Reticule 30/30

Optalens Initial 3-9 x 50
An optical quality that will surprise you. The image is clear, the anti-reflection treatment is perfect, no reticule brightness, unbeatable value for money

Optalens Initial 4-12 x 50
For all very long range shots. Optimal twilight factor, reticule 30/30, multi-coat treatment of lenses, nitrogen-filled body.

Model	3-7 x 20	4 x 32	6 x 40	3-9 x 40	3-9 x 50	4-12 x 50
Magnification	3-7	4	6	3-9	3-9	4-12
Tube (inch)	3/4"	1"	1"	1"	1"	1"
Reticule	30/30	30/30	30/30	30/30	30/30	30/30
Twilight Factors	7,7-11,8	11,3	15,5	10,9-19	12,2-21,2	14,1-24,5
Lens diameter (mm)	20	32	40	40	50	50

GTS

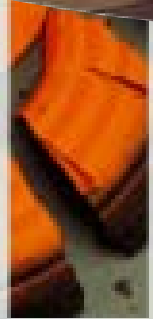
G

S



GTS Cal 12M Elite

With its superb engraving, this version of the GTS gains in distinction and elegance. The engraving is based on the distinctive GTS design (of a duck gradually being transformed by «morphing» into a clay), further enhanced with 24 carat gold and additional decorative engraving, and superb oil-rubbed European walnut.




BROWNING
 The Best There Is

6 0 - 6 1

INVECTOR+
 Long choke



B Y B R O W N I N G



BROWNING
WINCHESTER

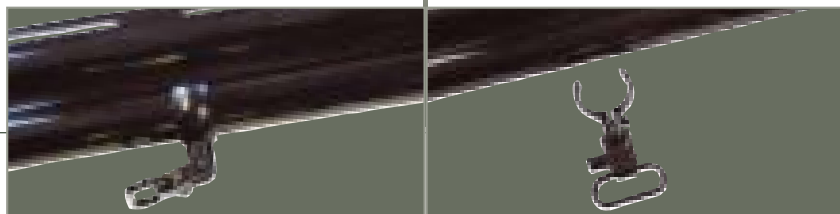
Browning recommends
 the use of ammunition by
 Browning and Winchester

GAME & TARGET SHOOTING

HUNTING & TARGET



Removable butt swivel ring system
supplied with each GTS



GTS Cal 12M Grade 1

This is the ideal model for both sporting clays and hunting. Its back-bored barrel, its 10 mm rib and its ability to shoot any type of cartridge (including steel shot) make it an incredibly efficient gun, without loss of comfort, for hunting waterfowl and migrating birds. It has removable butt swivel rings, its stock is made from very attractive selected European walnut with an oil-rubbed finish.



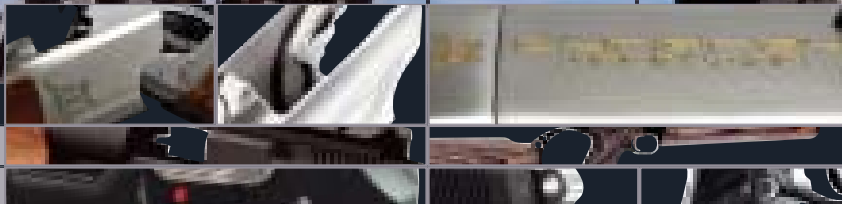
MODEL	SPECIAL G.T.S.
	Standard / Elite
BARRELS	
Calibre	12 M
Chamber	76 mm
Length	710 / 760 mm
Chokes	Invictor Plus
Top Rib	ventilated 10 mm
STOCK (*)	
Length	375 mm
Drop at comb	36 mm
Drop at heel	56 mm
FORE-END	tulip
TOTAL WEIGHT (*)	3,45 / 3,55 kg
FINISHING	
Action frame	greyed
Wood	oil finished

(*) Average values




BROWNING
 The Best There Is[®]

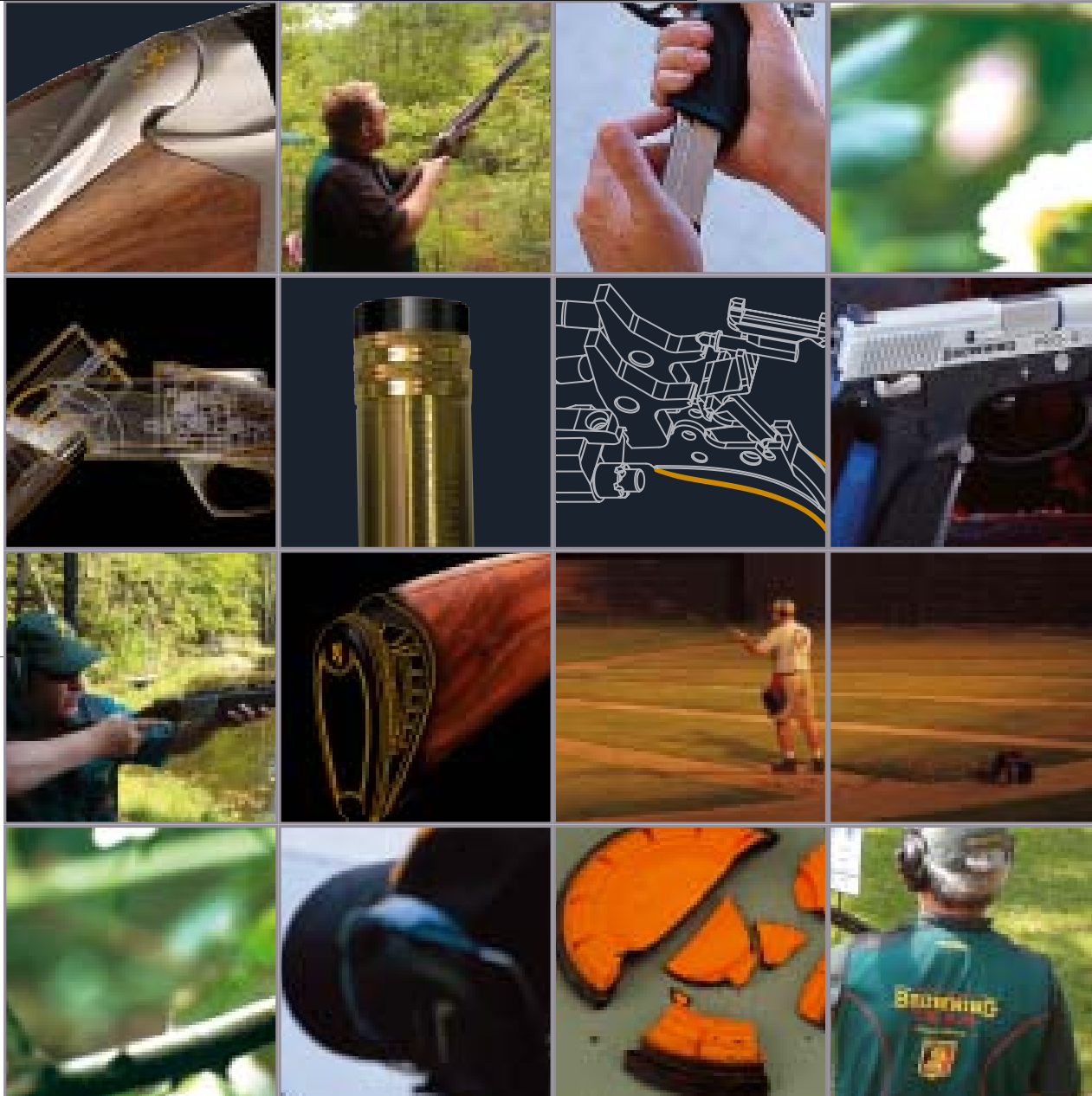
6 2 - 6 3



OVER-AND-UNDER SHOTGUNS	6	4	-	7	5
BUCK MARK RIFLE / SA .22/ BL .22	7	6			
HAND GUNS	7	7	-	7	9

B Y B R O W N I N G

TARGET





CYNERGY

BROWNING MAKES ALL THE DIFFERENCE

OVER-AND-UNDER SHOTGUNS

Since the introduction of John M. Browning's famed Superposed, the name Browning has been synonymous with innovative and reliable over and under shotguns. The best-selling B525 followed, successfully bearing the flag of Browning shotgun superiority and further solidifying Browning's place as the pre-eminent over and under shotgun company.

Continuing with the Browning tradition of quality and advanced technology, 2005 is the year of the Cynergy™ — a totally new low profile shotgun destined to have its place among the rich lineage of Browning shotguns. Like the Superposed and B525, the Cynergy is more than just another shotgun, it is uniquely Browning, The Best There Is™.

1. Innovative Design

- The most innovative over-and-under shotgun on the market.
- Developed by THE creator of the over-and-under shotgun.
- A silhouette which is classically elegant, modern and radically different

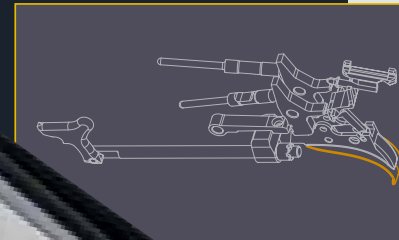


2. The lowest action frame profile : 60mm



- Its exclusive integrated hinge system offers an ultra low action frame.
 - A natural extension of the shooter
 - Reduced recoil sensation.
 - Reduces the barrel flip, allowing a faster 2nd shot.

3. Fastest firing : 0.0019 seconds



- 0.0019 seconds as opposed to 0.0031 for the competitors.
- New exclusive inversed firing system.
- Use of rocker arms to inverse the direction of the impact going from the impact wheels to the firing pins.
- Reduction in the stroke of moving parts
- Gives sharper, faster shooting.



BROWNING
The Best There Is

The biggest revolution since the creation of the B 25

4. 25% less recoil



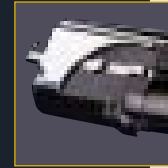
- «Inflex» butt plate, its design and material means that more recoil is absorbed than with any other butt plate.
- The plate's exclusive structure allows 1.5 to 2 times more absorption than with a traditional plate.
- Excellent shooting comfort, ideal for women and young shooters.
- Easy to adjust and economical stock length as there are 3 butt plates and an insert.
- 6 possible configurations give an adjustment range of 32mm



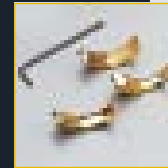
5. Essential features



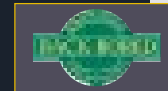
- Exceptional long-life and robustness thanks to its design and the integrated hinge system.



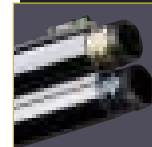
- Larger action frame surface, reduces both wear and rubbing.
- Mechanical inertial triggers, avoids double firing and guarantees the 2nd shot in any case.



- Adjustable trigger with 3 positions on target shooting models which allows you to change the trigger and make a final stock length adjustment.
- Linear impact wheel ejectors : straight, powerful ejection.
- Maximum safety : the only shotgun with this level of safety with both a trigger safety device, a group firing safety device and a rocker arm safety device.



- Back-bored barrels with a lightened profile : lighter and faster swing. (see page 30)



- New «Diamond» Titanium chokes, Titanium PVD-treated chokes which give excellent ballistic quality as well as perfect resistance to wear and corrosion.



- Chromed barrels and chambers: do not rust and makes maintenance easier.
- Steel Shot proofed for the hunting class models.
- 2 flat bolts located here and there on the barrels ensure excellent locking.



CYNERGY



Cynergy sporter
Specially designed for target shooting, the Cynergy Sporter stand out in particular because of its exclusive Diamond Titanium external chokes which offer excellent ballistic quality. Its look and revolutionary design without a doubt give the shooting world a real revival.



BY BROWNING



Cynergy Composite Black Ice
Its futuristic appearance will be the talk of the shooting grounds.
Stock and fore-end made of composite materials with rubber inserts give this shotgun a significant look and great resistance to the elements.
3 adjustable cheek-pieces are delivered with the gun enabling you to modify the stock's cast as you wish.

MODEL	Cynergy Sporter	Cynergy Sporter Composite Black Ice	Cynergy Sporter Black Silver	Cynergy Trap	Cynergy Uncut
BARRELS					
Calibre	12	12	12	12	12
Chamber	76 mm	76 mm	76 mm	70 mm	70 mm
Length	71 - 76 - 81	71 - 76 - 81	71 - 76	76 - 81	76 - 81
Chokes	Diamond	Diamond	Diamond	Fixes 3/4/F	Fixes 3/4/F
Top Rib	Vent. 11 - 8 mm	Vent. 13 - 10 mm	Vent. 13 - 10 mm	Vent. 13 - 10 mm	Vent. 13 - 10 mm
STOCK (*)					
	Pistol	Pistol adjustable	Pistol	Pistol	Pistol
Length	375 mm	362 mm	375 mm	370 mm	
Drop at comb	45 mm	28 - 46 mm	45 mm	38 mm	
Drop at heel	62 mm	28 - 46 mm	62 mm	51 mm	
FORE-END					
	Tulip	Tulip	Tupil	semi-beavertail	semi-beavertail
TOTAL WEIGHT (*)	3.5 kg	3.4 kg	3.5 kg	3.5 kg	3.5 kg
FINISHING					
Action frame	grey & gold engraving oil finished	grey & gold engraving Composite	Bronzed, Silver engraved	grey & gold engraving oil finished	grey & gold engraving
Wood			Poncé huilé		
SPECIAL FEATURES					
	Diamond 1/4 - 1/2 assembled - Diamond 3/4 cyl. provided - 2 butt plates and an insert provides	Checkering with rubber inserts Diamond 1/4 - 1/2 assembled - 1 butt plate and an insert provides	Diamond 1/4 - 1/2 assembled - 2 butt plates and an insert provides	2 butt plates and an insert provides	2 butt plates and an insert provides

(*) Average values



Browning recommends the use of ammunition by Browning and Winchester



OVER-AND-UNDER SHOTGUNS



Cynergy Black Silver



Cynergy Trap



Cynergy "Uncut"

***The biggest revolution since
the creation of the B 25.***

Cynergy Black Silver

Black action frame, silver signatures, oil-rubbed walnut, the Cynergy Black Silver brings a new identity to the Cynergy family and seems to be the Sporter model best suited to hunting.

Cynergy Trap

The stock dimensions have been closely studied, a grip that more than ever leaves its mark and a slightly fluted fore-end make the Cynergy Trap extremely effective in the various Trap disciplines and this at the highest level. Secondly, the Cynergy's very design with its low action frame and its revolutionary shooting allows you to fire 2nd shots extremely quickly and in complete comfort. A real first.

Cynergy "Uncut"

To enable you to adjust your stock to your dimensions perfectly and to choose your own standards, we offer you this Uncut version of the Cynergy with uncut stock. Perfection is yours...



ULTRA X - TRAP



6 8 - 6 9



the new revolutionary adjustable stock of the Ultra X. Undo the single adjustable screw through the butt plate, move the cheek piece to the desired position and retighten the screw. You are now ready to fire.

Single adjustable selective trigger. Supplied with 3 different triggers. Quick and accurate, as its position can be adjusted to suit the size of your hand.

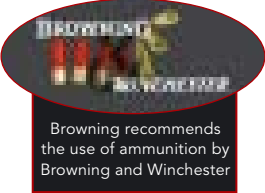
Concentrated technology ...

Ultra XTR Midas Cal 12
This well known Trap model is now also available with keyless removable Midas chokes, giving it greater versatility for the different trap disciplines (Olympic trap, Universal trap, double trap, etc.) and unequalled ballistic efficiency.

BY BROWNING

MODEL	ULTRA XTR MIDAS	ULTRA XT	ULTRA XTR	ULTRA XSH
BARRELS				
Calibre	12	12	12	12
Chamber	70 mm	70 mm	70 mm	70 mm
Length	760 mm	760/810 mm	760/810 mm	740/760 mm
Chokes	Midas	fixed	fixed	Midas
Top Rib	vent. 13-10 mm	vent. 13-10 mm	vent. 13-10 mm	vent. 13-10 mm
STOCK (*)	Pistol adjustable	Pistol adjustable	Pistol adjustable	Pistol adjustable
Length	375 mm	375 mm	375 mm	375 mm
Drop at comb	28-38 mm	28-38 mm	28-38 mm	28-38 mm
Drop at heel	32-42 mm	32-42 mm	32-42 mm	32-42 mm
FORE-END	semi-beavertail	semi-beavertail	semi-beavertail	Tulip
TOTAL WEIGHT (*)	3,5/3,6 kg	3,5/3,6 kg	3,5/3,6 kg	3,55/3,6 kg
FINISHING				
Action frame	grey & gold engraving	grey & gold engraving	grey & gold engraving	grey & gold engraving
Wood	oil finished	oil finished	oil finished	oil finished
SPECIAL FEATURES	Midas 3/4 Full factory installed - Midas 1/2 - Extra Full and key supplied - Adjustable rubber cheek piece		Adjustable rubber cheek piece	Midas 1/4-3/4 factory installed - Midas 1/2 - Full and key supplied

(*) Average values - supplied with Allen key for adjustment of stock



Browning recommends the use of ammunition by Browning and Winchester

ULTRA XT - XTR - XSH

OVER-AND-UNDER SHOTGUNS

Excellent for Trap



Removable Midas chokes. Removal and installation without need of a wrench. Unequalled ballistic performance.



Ultra XT



Ultra XTR



Ultra XSH



Ultra XT

Ultra XTR

Ultra XSH

The Ultra XT (T for Trap) version is a gun of undoubtable efficiency. The adjustment range of its cheek piece allows it to be adapted to all angles of clay. The semi-beavertail fore-end, the symmetrical grip and its extraordinary balance give it impeccable handling. Comes in an aluminum carry case.

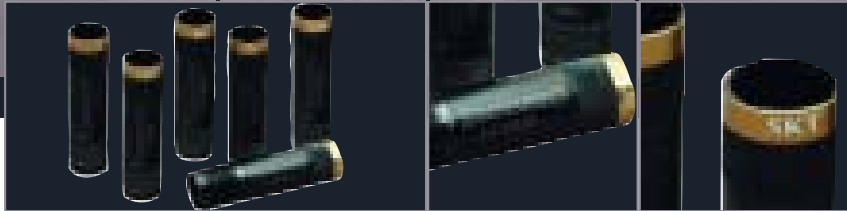
This model is provided with a rubber cheek piece that is non-slip silky smooth to the touch. This gun allows millimeter accuracy of aim with a level of comfort never before achieved. It is intended above all for very intensive use. Comes in an aluminum carry case.

Intended for trap shooters seeking maximum versatility between disciplines (trap – double trap and helice (ZZ bird), this Ultra XSH is equipped with removable Midas chokes and has 74 or 76 cm barrels. Comes in an aluminum carry case.

ULTRA X - SPORTER



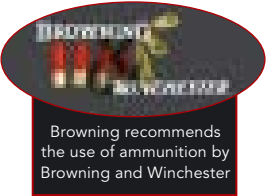
7 0 - 7 1



Midas(*) Chokes: easily replaced without need for a wrench. They provide maximum ballistic performance.
(*) Developed in conjunction with Briley.

Ultra XS Sporter
Sporting clays is an increasingly technical discipline with a very wide range of trajectories. A field course, a wood course, with a majority of incoming and going away clays... It is therefore necessary to be able to alter the configuration of the stock in a matter of seconds.
The XS Sporter version is equipped with Midas chokes and the Sporting version has fixed chokes. Comes in an aluminum carry case.

Concentrated technology ...



B Y B R O W N I N G

MODEL(*)	ULTRA XS Sporting	ULTRA XS Sporter	ULTRA XS Sporter Ported	ULTRA XS Sporter Cal 20M
BARRELS				
Calibre	12	12	12	20
Chamber	70 mm	70 mm	70 mm	76 mm
Length	710/760 mm	710/760/810 mm	710/760 mm	710/760 mm
Chokes	fixed	Midas	Midas	Invector+
Top Rib	vent. 13-10 mm	vent. 13-10 mm	vent. 13-10 mm	vent. 10 mm
STOCK (**)	Pistol adjustable	Pistol adjustable	Pistol adjustable	Pistol
Length	375 mm	375 mm	375 mm	375 mm
Drop at comb	28-38 mm	28-38 mm	28-38 mm	36 mm
Drop at heel	48-58 mm	48-58 mm	48-58 mm	56 mm
FORE-END	tulip	tulip	tulip	tulip
TOTAL WEIGHT(**)	3,5/3,55 kg	3,55/3,6 kg	3,55/3,6 kg	3,15/3,2 kg
FINISHING				
Action frame	grey & gold engraving	grey & gold engraving	grey & gold engraving	grey & gold engraving
Wood	oil finished	oil finished	oil finished	oil finished
ACCESSORIES				
Sporter : Midas 1/4 - 3/4 - 1/2 - Full and key supplied				

(*) Fixed chokes for Sporting • Midas forXS Sporter, XS Sporter Ported and INV+ for XS Cal 20.
(**) Average values - supplied with Allen key for adjustment of stock

ULTRA XS

Excellent for Hunting classes

OVER-AND-UNDER SHOTGUNS



Ultra XS Sporter



Ultra XS Sporter Ported



Ultra XS Sporter non adjustable



Ultra XS Sporter cal 20M



Ultra XS Sporter Ported

With its ported barrels, this gun is the very best there is in terms of efficiency, technology and comfort. By significantly reducing recoil and muzzle flip during shooting, the gun allows a second shot to be fired more quickly and more accurately. Comes in an aluminum carry case.

Ultra XS Sporter Non Adjustable

Traditional stock for this version of the Ultra XS, fans will be overjoyed.

Ultra XS Sporter cal 20M

Equipped with Invector Plus chokes, a 10 mm sighting rib and a magnificent oil-rubbed wood finish, the Ultra XS 20 is the ideal gun for sports shooters.

B525 SPORT



7 2 - 7 3



B525 Sporting Advance
Intermediary model between the classic and Elite versions, the B525 classic Advance is declared to be the best value for money in the 525 range with in particular its grade 2.5 wood and its beautiful hunting scene engraving.



5 x Invector



B Y B R O W N I N G

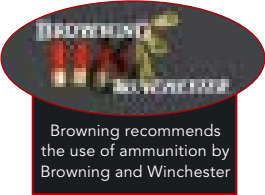
Following the introduction of the hunting B525 in 2003, the range is naturally being developed this year in the Sports shooting field. In fact, it is a complete range of B525 Sport which see the light of day with numerous versions which reveal major innovations:

- the new barrels are now chambered in 3" which allow steel shot to be fired, in the models fitted with adjustable, «Invector» type chokes. These same «Invectors» are also new, as they are going to be made of «stainless steel» from now on, which makes them light and sturdy to improve patterns.

- Another change, the trigger weights which have been re-worked to become both lighter and more accurate.
- The B525 Sport line is resolutely innovative with a specific re-filing of the action frame and the barrel wings. All the models are also fitted with lateral ventilated ribs which improve the guns handling in particular.
- The wood benefits from an all new oil finish which is far brighter.

MODEL	B525 Sporting	B525 Sporter	B525 Sporting	B525 Sporter
BARRELS				
Calibre	12M	12M	20 M	20 M
Chamber	76 mm	76 mm	76 mm	76 mm
Length	710 - 760 - 810 mm	710 - 760 - 810 mm	710 - 760 mm	710 - 760 mm
Chokes	1/4-3/4	INVECTOR	1/4-3/4	INVECTOR
Top Rib	vent. 10 mm	vent. 10 mm	vent. 10 mm	vent. 10 mm
STOCK (*)				
	pistol	pistol	pistol	pistol
Length	375 mm	375 mm	375 mm	375 mm
Drop at comb	36 mm	36 mm	36 mm	36 mm
Drop at heel	56 mm	56 mm	56 mm	56 mm
FORE-END	tulip	tulip	tulip	tulip
TOTAL WEIGHT (*)	3,4 - 3,5 kg	3,45 - 3,55 kg	3,1 - 3,15 kg	3,15 - 3,2 kg
FINISHING				
Action frame	greyed	greyed	greyed	greyed
Wood	oil finished	oil finished	oil finished	oil finished
ACCESSORIES				
		(1)		(1)
OPTIONS				
	(3)	(3)	(2)	(2)
available in left-handed version				

(1) Sporter : INVECTOR 1/4-1/2 mounted, 3/4 and cyl supplied
(2) finishing Elite - Prestige
(3) finishing Advance - Elite - Prestige - Ultimate
(*) Average values



Browning recommends the use of ammunition by Browning and Winchester

B525 SPORT

OVER-AND-UNDER SHOTGUNS



B525 Sporting Advance



The Best Performing and most reliable shotgun

B525 Sporter Cal 12 also available
in the following grades

Classic Grade 1

Elite Grade 3

Prestige Grade 5

Ultimate Grade 6



B525 sporter Elite cal 20M



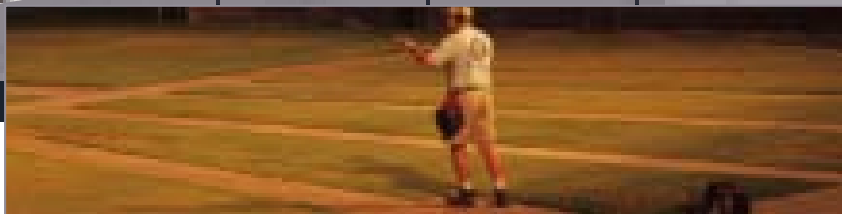
B525 sporter Prestige cal 20M

B525 TRAP




BROWNING
The Best There Is

7 4 - 7 5



B Y B R O W N I N G




BROWNING
WINCHESTER

Browning recommends
the use of ammunition by
Browning and Winchester

B525 TRAP

OVER-AND-UNDER SHOTGUNS



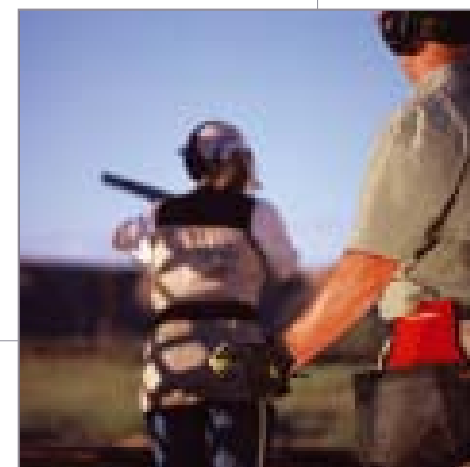
B525 Trap Advance cal 12



The Best Performing and most reliable shotgun

These two B525 Trap versions are perfectly designed for Trap, they benefit from a stock and hand-guard whose dimensions have been carefully studied, a rib which is 13 mm wide and long barrels.

As for the Advance model, it is endowed with magnificent English style engraving and superior quality wood.



B525 Trap Cal 12

MODEL	B525 TRAP	B525 advance
BARRELS		
Calibre	12	12
Chamber	70 mm	70 mm
Length	760 - 810 mm	760 - 810 mm
Chokes	3/4-1/1	3/4-1/1
Top Rib	vent. 10 mm	vent. 10 mm
STOCK (*)	pistol	pistol
Length	375 mm	375 mm
Drop at comb	33,5 mm	33,5 mm
Drop at heel	39 mm	39 mm
FORE-END	semi-beavertail	semi-beavertail
TOTAL WEIGHT (*)	3,5 - 3,55 kg	3,5 - 3,55 kg
FINISHING		
Action frame	greyed	greyed
Wood	oil finished	oil finished
ACCESSORIES		
OPTIONS		
	available in left-handed version	

(1) Sporter : INVECTOR 1/4-1/2 mounted, 3/4 and cyl supplied

(*) Average values

BUCK MARK RIFLE / SA .22/ BL .22 PRO 9



7 6 - 7 7

BUCK MARK RIFLE / SA .22/ BL .22

.22 RIFLES



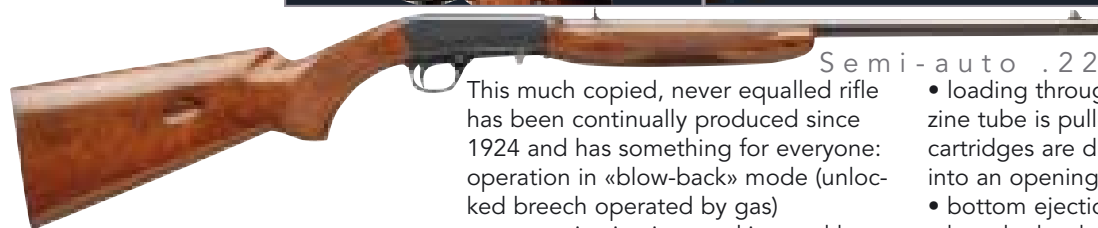
This is without doubt one of our very favourite Browning products. With its exceptional, highly accu-

Buck Mark Rifle rate and reliable design, this gun provides a vast range of possibilities of use.



This is the latest addition to the Buck Mark Rifle range. It has been designed to give the shooter the maximum possible accuracy through the use of a heavy large

Buck Mark Classic Target Rifle diameter Match type barrel. The laminated wooden stock and forearm give it a special and highly distinctive look.



Semi-auto .22

This much copied, never equalled rifle has been continually produced since 1924 and has something for everyone: operation in «blow-back» mode (unlocked breech operated by gas)

- automatic ejection, cocking and loading

- loading through the stock (the magazine tube is pulled to the rear and the cartridges are dropped one at a time into an opening in the stock)

- bottom ejection
- barrel take-down with wear adjustment



BL .22

This gun, with its undeniable «Wild West» charm features a very short travel lever (33°), external hammer and magazine tube. It also allows the possibility of mixing all types of cartridge (long, long-rifle, short) without risk of jamming.

BY BROWNING

MODEL	SEMI-AUTO .22 Grade 1	Buck Mark Rifle	Buck Mark Classic Target Rifle	BL .22
BARREL			Match	
Length	490 mm	500 mm	500 mm	500 mm
Calibre	.22 S or .22 LR	.22	.22	.22 LR
Rearsight	folding, adjustable in elevation	adjustable	-	folding, adjustable in elevation
Frontsight	transversal	fibre optic	-	bead on base plate
STOCK (*)	pistol			straight
Length	345 mm	476 mm	476 mm	343 mm
Grip		ergonomic plates	ergonomic plates	
Material		wood	laminated wood	
Drop at comb	30 mm	22 mm	22 mm	41 mm
Drop at heel	67 mm	38 mm	38 mm	57 mm
TRIGGER				
Trigger pull		1,15 to 2,25 Kg	1,15 to 2,25 Kg	
MAGAZINE				
Type	tubular (stock)			tubular
Capacity without reducer	11 LR or 15 S	10 cartridges	10 cartridges	15 LR, 17 L, 22 S
Capacity with reducer	9			see legislation
TOTAL WEIGHT (*)	2,3 Kg	2 kg	2 kg	2,27 Kg
Total Length		850 mm	850 mm	
FINISHING				
Receiver	blued	polished finish	polished finish	blued
Wood	gloss varnish	sanded, blued	sanded, blued	gloss varnish
SPECIAL FEATURES		Integral mounting rail	Integral mounting rail	
OPTIONS	Custom version			

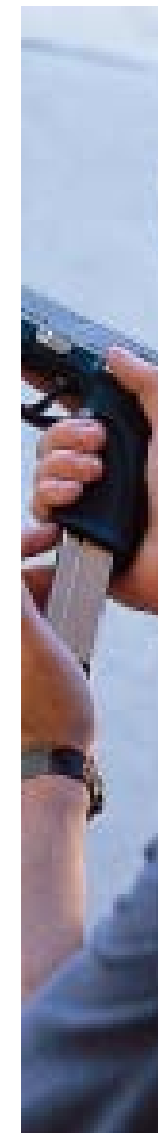
(*) Average values

PRO 9

HAND GUNS



Pro 9



Pro 9

The Pro 9 handgun is the result of lengthy research aimed at developing a gun that precisely meets the needs of the market. This classic double action handgun (double action for first shot, single action for the others), which was jointly developed by FN Herstal and Browning, is not only a highly reliable gun but also a unique solution in terms of ergonomics, safety and modularity.

The expertise of FN Herstal and Browning in handgun design and the care taken in developing the Pro 9 have already made it a « Standard » of reliability, like its predecessor the celebrated HP. This gun incorporates highly sophisticated technological solutions:

The steel slide sits on a steel mechanical cradle, which is itself housed in a receiver made of synthetic material, thus combining strength, weight and balance.

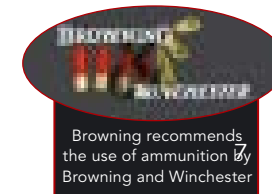
The firing mechanism is housed in an easily replaceable « firing box », for ease of servicing, both for yourself and your gunsmith. A medium-sized handgun, the handle can be adapted to suit the hand of each user

Safety has not been ignored. The Pro 9 handgun is equipped with the most modern systems:

- Firing pin safety to avoid the gun accidentally firing without first pulling the trigger.
 - A safety lever to make the gun safe and to deactivate the hammer with or without a cartridge in the chamber.
- Finally, it is fitted with a rail which is able to receive an extensive range of accessories, such as flash lights, laser designators, etc.

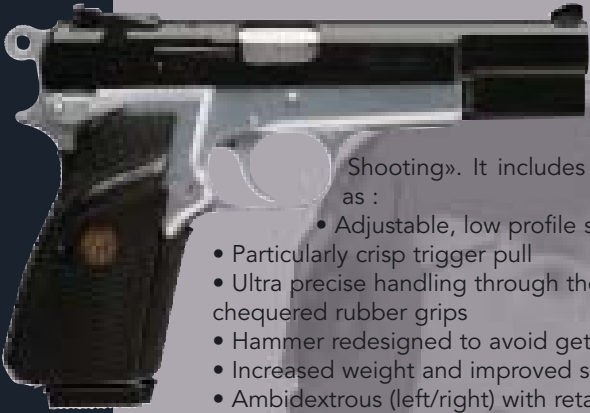
MODEL	PRO 9 (DA/SA)*
BARREL	
Length	101,6 mm
Calibre	9 mm LUGER
Rearsight	fixed
Frontsight	fixed
	dovetail notch
GRIP	
Type	ergonomic
Material	Hi-Impact Nylon
TRIGGER	
Trigger pull (**)	DA: 4,6 kg / SA: 1,7 kg
MAGAZINE	
Capacity	15
TOTAL WEIGHT	710 g magazine empty
TOTAL LENGTH	180 mm
FINISHING	Meconite /
SPECIALFEATURES	
	Tenifer (slide)
	Reversible catch/
	Firing pin safety
	Integrated Picatinny rail

(*) DA/SA = double action for the first shot, single action for the others



GP-BDA BUCK MARK

GP - BDA HAND GUNS



GP Practical ajustable
The GP Practical has been developed to meet the stringent demands of «Practical Shooting». It includes numerous improvements, such as :

- Adjustable, low profile sights
- Particularly crisp trigger pull
- Ultra precise handling through the use of Pachmayr chequered rubber grips
- Hammer redesigned to avoid getting caught when drawing
- Increased weight and improved stability
- Ambidextrous (left/right) with retained magazine safety
- Larger magazine entry in the frame
- Ejectable magazine equipped with Pachmayr rubber buffer
- Particularly corrosion resistant finishes



Browning BDA
The BDA is an extremely reliable gun which is very robust and provides maximum safety. It incorporates the results of decades of experience gained with the famous HP pistol and includes numerous innovations, both in terms of the materials used and the design of certain parts. The BDA offers the following features :

- Greater strength of parts
- Lower weight and increased compactness
- Improved extraction, ejection and feeding
- Automatic firing pin safety
- Fixed sights
- Reversible magazine stop
- New magazine
- Better grip.



GP Sport

The latest standard version of the HP handgun incorporating new low profile sights.

GP MK III S

The GP MK III S combines all the qualities of the original HP with an ambidextrous safety and a weight (910 g) that makes it a safer and more accurate gun to handle. It is also fitted with Pachmayr grips for improved handling. A handsome gun with its blued and chrome finishes.

GP Silver Chrome

The GP also exists in a Silver Chrome version, equipped with an adjustable backsight that can be adjusted for both windage and elevation and a sport foresight with a rounded base. It is also fitted with Pachmayr grips to provide improved handling. A handsome gun with its blued and chrome finishes.



MODEL	GP MK III S	GP Practical	GP Silver Chrome	GP Sport	BDA
BARREL					
Length	119 mm	119 mm	119 mm	119 mm	118,5 mm
Calibre	9 mm Luger	9 mm Luger	9 mm Luger	9 mm Luger	9 mm Luger
Rearsight	dovetail sight notch	adjustable height and direction or fixed	adjustable height and direction	adjustable height and direction	dovetail sight notch
Frontsight	MH III dovetail notch	specific Sport dovetail notch	specific Sport dovetail notch	specific Sport dovetail notch	dovetail notch
Grip					
Type	ergonomic plates	ergono. checkered	ergono. checkered	ergono. checkered	ergonomic plates
Material	plastic	rubber	rubber	wood	plastic
TRIGGER					
Trigger pull (*)	3,2 to 4,5 Kg	3,2 to 4,5 Kg	3,2 to 4,5 Kg	3,2 to 4,5 Kg	1,7 to 2,7/4,5 to 5,5 Kg
MAGAZINE					
Capacity	13 cartridges	13 cartridges	13 cartridges	13 cartridges	14 cartridges
TOTAL WEIGHT (*)	0,91 Kg	0,98 Kg	0,98 Kg	0,93 Kg	0,875 Kg
TOTAL Length (*)	200 mm	200 mm	200 mm	200 mm	200 mm
FINISHING	sanded, phosphated, varnished	phosphated black varnished sanded	sanded chrome plate	polished chrome plated	phosphated varnished
SPECIAL FEATURES	(1)	(1)	Magazine with shock absorber	(1)	(2)
ACCESSORIES					
	Additional magazine Cleaning rod Transport case			Additional magazine. Cleaning rod. Transport case	
OPTIONS					
	Custom Shop. Additional sights MKIII with luminescent spot «Meprolight»		Custom Shop. Additional sights MKIII with luminescent spot «Meprolight»		
	Martingale ring	3 position flat spanner Allen wrench Ø 1.5 mm	3 position flat spanner Allen wrench Ø 1.5 mm	3 position flat spanner Allen wrench Ø 1.5 mm	calibre 9 X 21

(1) Manual and ambidextrous safety, with lever blocking sear and slide.
Magazine and firing pin automatic safeties. Magazine with visualisation holes and ejection spring
(2) Automatic firing pin safety – Ambidextrous hammer lowering lever. Magazine with visualisation holes and ejection spring. Removable martingale ring. Exposed hammer.
(*) Average values

BUCK MARK

.22 HAND GUNS

Buck Mark Standard

A cut above the rest, this is Browning's version of a basic pistol. It can easily compete with the best .22 calibre target shooting guns. Hundreds of HMSA winners are there to prove it. Its features include a thumb-operated magazine release, a 10-shot magazine, a bull barrel and «Pro-Target» sight.

Buck Mark Standard Nickel

Black rubber and bronzed steel combine to make this a particularly tough-looking pistol. The nickel plating on the slide and barrel provide increased protection. The grips provide sure handling. An extremely reliable and accurate pistol.

Buck Mark Plus

The Buck Mark Plus has exactly the same features as the standard model, with the addition of laminated wooden pistol grips make for a naturally warm feeling of warmth and great looks.



MODEL	BUCK MARK Standard	BUCK MARK Standard Nickel	BUCK MARK Plus	BUCK MARK Bullseye	BUCK MARK Target 5.5
BARREL					
Length	140 mm	140 mm	140 mm	184 mm	140 mm
Calibre	.22 LR	.22 LR	.22 LR	.22 LR	.22 LR
Rearsight	adjustable	adjustable	adjustable	adjustable	adjustable avec pont anti-reflet
Frontsight	fixed	fibre optic	fibre optic	fixed	adjustable
Grip					
Type	ergonomic plates	ergonomic plates	ergonomic plates	ergonomic plates	ergonomic plates
Material	Plastic	Plastic	laminated wood	wood	walnut
TRIGGER					
Trigger pull (*)	1,15 to 2,25 Kg	1,15 to 2,25 Kg	1,15 to 2,25 Kg	1,15 to 2,25 Kg	1,15 to 2,25 Kg
MAGAZINE					
Capacity	10 cartridges	10 cartridges	10 cartridges	10 cartridges	10 cartridges
TOTAL WEIGHT (*)	1 Kg	1 Kg	1 Kg	1 Kg	1 Kg
Total Length (*)	241 mm	241 mm	241 mm	287 mm	245 mm
FINISHING	polished, sanded, blued	polished, sanded, nickel	polished, sanded, blued	polished, sanded, blued	polished, sanded, blued
SPECIALFEATURES					
					Ribs ability to fix scope
ACCESSORIES					
	Supplied with Allen key	Supplied with Allen key	Supplied with Allen key	Supplied with Allen key	Allen key to adjust trigger pull
OPTIONS					
					Ergonomic grip

(*) Average values

Buck Mark Bullseye

According to the old adage, it's the shooter that counts, not the gun. But the shooter also knows that he wouldn't have been able to win without his gun. It is for this reason that many sports shooters have chosen the Browning Buck Mark Bullseye. Its accuracy and reliability make it the perfect choice for Compton shooting. It is very well balanced, and is available with a rosewood or a rubber grip.

Buck Mark Target 5.5 blued finish

Identical to the Buck Mark Target 5.5 Gold, but with the original Target blued finish.

ASSEMBLY

RIFLES

PIVOTING MOUNTS

CCS 525

H0/1412	FRONT BASE PIVOT MOUNT
H310/00121	FRONT RING 1" H.12 C.17
H310/05121	FRONT RING 30mm H.12 C.17
H2514/0080	BASE BH 8.0
H318/0050	BACK RING 1" H.5
H318/5050	BACK RING 30mm H.5

BAR MK1/MK2 - ACERA - SHORT/LONGTRAC - DUALIS - BPR - ABOLT - EUROBOLT - ERICE

H300-00003	BAR - BPR - ACERA - DUALIS COMPLETE PIVOT MOUNT 1"
H300-05003	BAR - BPR - ACERA - DUALIS COMPLETE PIVOT MOUNT 30mm
H300-00002	ABOLT EUROBOLT COMPLETE PIVOT MOUNT 1"
H300-05002	ABOLT EUROBOLT COMPLETE PIVOT MOUNT 30mm
H300-00143	EUROPEAN COMPLETE PIVOT MOUNT 1"
H300-05143	EUROPEAN COMPLETE PIVOT MOUNT 30mm
H142-70242	ERICE COMPLETE PIVOT MOUNT 1"
H142-75242	ERICE COMPLETE PIVOT MOUNT 30mm

FIXED MOUNTS

BAR MK1/MK2 - ACERA - SHORT/LONGTRAC - DUALIS - BPR

HMOUNTBARSHTR	BAR MK1 MK2 - SHORT/LONGTRAC - RAIL
HMOUNTBARSHTR	BPR - ACERA - DUALIS - RAIL

RINGS FOR FIXED MOUNTS (FITS ON ALL ABOVE MODELS)

HBL10048	RINGS 30 mm
HBL10042	RINGS 1"

ABOLT - EUROBOLT - EUROPEAN

HMOUNTWSM	ABOLT II FIXED SCOPE BASE KIT WSM
HMOUNTWSSM	ABOLT II FIXED SCOPE BASE KIT WSSM

HBL15520	ABOLT EUROBOLT SHORT ACTION BASE KIT
HBL15522	ABOLT EUROBOLT LONG ACTION BASE KIT

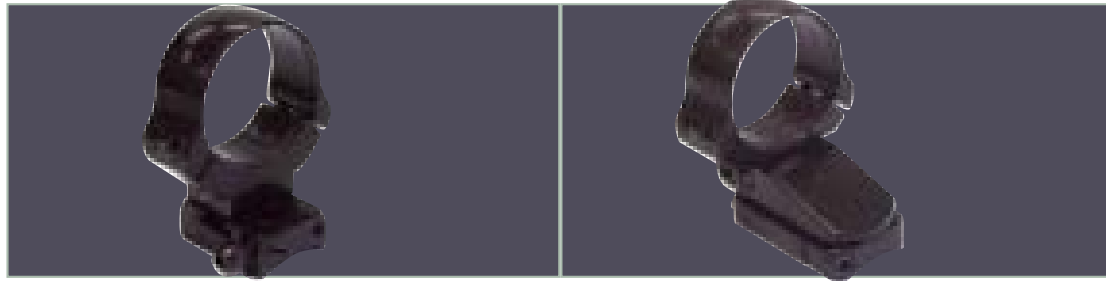
RINGS FOR FIXED MOUNTS (FITS ON ALL ABOVE MODELS)

HBL10048	RINGS 30 mm
HBL10042	RINGS 1"

ERICE (Optasight & Optapoint)

H82-10242	RAIL FOR ERICE FOR OPTASIGHT_OPTAPOINT
-----------	--

CCS525



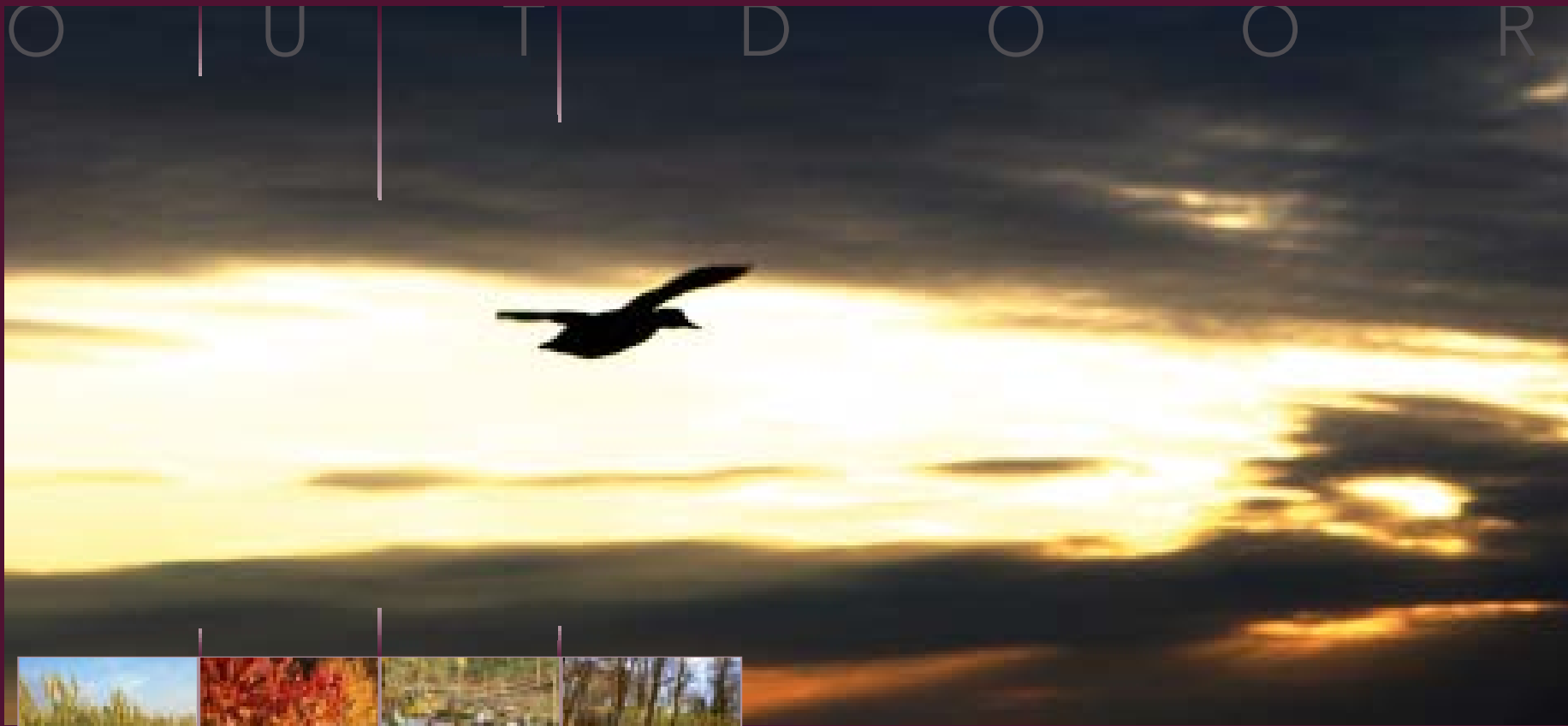
BAR MK1/MK2 - ACERA - SHORT/LONGTRAC - DUALIS - BPR - ABOLT - EUROBOLT - ERICE



BAR MK1/MK2 - ACERA - SHORT/LONGTRAC - DUALIS - BPR



ABOLT - EUROBOLT - EUROPEAN



HUNTING & SHOOTING CLOTHES	8	2	-	9	1
CASES • GUNSLIPS & BAGS	9	2	-	9	5
KNIFES	9	6	-	9	8

BY BROWNING

XPO™
XTENDED PERFORMANCE OUTERWEAR

INTRODUCING XPO™ BIG GAME

BROWNING'S NEW XPO™: XTENDED PERFORMANCE OUTERWEAR

Different fabrics, features, laminates and linings come and go in the outdoor garment industry, but look to Browning to be on the cutting edge of tough, quiet, comfortable and practical outdoor wear.

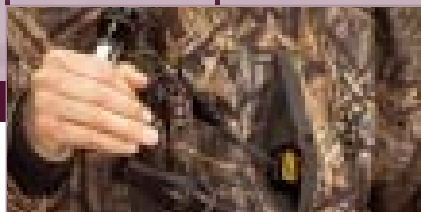
Browning's new XPO outerwear is designed and constructed to stand up to the most severe outdoor conditions that Mother Nature can send.

Browning's new XPO outerwear teams up with new Pre-Vent™ fabric, a **waterproof, windproof, breathable laminate**. This new fabric ensures hunters will stay dry and warm. Pre-Vent fabric also breathes, allowing perspiration to escape. Hunters can't predict the weather, but they can predict the excellent protection and comfort they get from Browning's new XPO Big Game Series featuring Pre-Vent fabrics.

PRE-VENT™ STAY DRY AND COMFORTABLE

WATERPROOF, WINDPROOF, BREATHABLE,

Browning's latest development in outdoor draws upon every feature dedicated hunters demand of their performance clothing. The new Pre-Vent™ fabric is waterproof, windproof and breathable, not to mention lightweight, durable and highly affordable. Pre-Vent fabric is **100% Waterproof**, a feature most outdoor enthusiasts insist upon, and at the same time prevents the chilling winds of autumn from cutting through the garment. And for those times when the temperatures or activity levels rise, Pre-Vent is highly breathable, wicking moisture away from the body, leaving hunters dry regardless of the weather. Pre-Vent is featured in a wide range of Browning outdoorwear for 2005. From cold-weather parkas and jackets to lightweight raingear, Pre-Vent is the choice for any hunter, any person, in any environment, in any condition and in any weather.



GEAR 'TRIEVERS'™ SYSTEM

PROTECTION AND CONVENIENCE

Available in a Call Lanyard model with four slip-knot lanyard, or an Accessory model, with split-ring attachment, the Gear 'Trievers'™ (patent pending) attaches to a specialized tab inside the pockets of this year's parkas. The Gear 'Trievers' retractable cable keeps gear, such as calls, flashlights and GPS units, tucked inside the side pockets until they are ready to be used. Sold separately.

POCKET EXPANDER SYSTEM

A NECESSARY CONVENIENCE

The new Browning Pocket Expander System (patent pending) is the latest convenience found in this year's Big Game parkas. The pocket Expander System allows for a shell loop flap to be tucked inside the large bellows pockets to protect shells against the elements, or placed on the outside for easier, faster access. This unique design also allows for access to the bellows pockets even when using the shell loop flap on the outside. Count on Browning's innovations to design hunting clothing that make a day in the field far more comfortable and convenient.



XPO™ BIG GAME 4-IN-1 PARKA

Shell :

XPO Big Game fabric with Pre-Vent™ waterproof, windproof, breathable laminate.

- Lining has mesh in upper body and nylon taffeta in lower body and arms.
- Set-in sleeves featuring one piece, no-seam construction and articulated elbows
- Water-tight neoprene cuffs with hook and loop tabs
- Two bellows pockets with new Pocket Expander System and handwarmer pockets
- Pockets on left chest to accommodate Browning's New Gear 'Trievers'™ System
- One inside security pocket with zipper closure
- Internal waist drawcord
- Detachable hood with molded visor, height adjustment drawcord and two button front closure
- Two-way front closure with inner and outer

- storm flaps secured by five snaps
- License tab in back

Liner : • Quiet camo warp knit shell fabric

- Solid colour nylon taffeta lining
- Thermore® insulation
- Reversible design
- Set-in sleeves
- Two pockets on each side
- Elasticised waist
- Rib knit cuffs
- Sizes S-XXXL

30369214••

OUTDOOR

GEAR TRIEVER™



Gear 'Trievers'™
system
121011


DRYlite™

DRY-LITE™

LET IT RAIN AND RAIN AND RAIN
LIGHTWEIGHT, PACKABLE RAINGEAR.

Waterproof technology has come a long way since the days of sweat-inducing, rubberised rain coats. And **no technology is more advanced than Browning's new Dry-Lite™ raingear.** Featuring Browning's all-new Pre-Vent™ **waterproof, windproof, breathable,** 2.5 layer laminate, Dry-Lite™ is constructed from a lightweight, high-density tricot, giving it the durability raingear needs. But the real benefit of Dry-Lite™ is its light weight. At a combined weight of 1.2 pounds, the Dry-Lite Jackets and Pants fit into their own stuff sacks that can easily be carried in a small bag. Talk about a dream come true for hunters. The compact size and minimised weight of Dry-Lite makes it perfect for trekking into the remote country, stuffing into a pack for a questionable weather day in a treestand or simply stashing it behind a car seat for those unpredictable thunderstorms. Dry-Lite is the answer for those needing quality, **lightweight,** package raingear.



- Short sleeve camo t-shirt
- 100% Cotton jersey • Chest pocket with Buckmark embroidery
 - Mossy Oak camo patterns

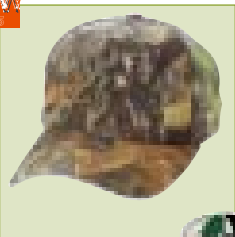
- Sizes : S-2XL
 - Mossy Oak® New Break-Up® Break-Up™
- 30111914••



Camo cap with 3D Buckmark

- Adjustable back
- One size fits all
- Mossy Oak® Break-Up™

308479141



NEW
2005


DRYlite™

←PRE-VENT™
WATERPROOF • WINDPROOF • BREATHABLE



DRY-LITE™ JACKET

- High-density tricot with Pre-vent™ waterproof, breathable fabric
- Raglan sleeve construction with adjustable, water-tight hook and loop cuffs
- Adjustable attached hood with drawcord closure and molded brim
- Full front closure with WaterGuard™ zipper and chin guard
- Two handwarmer pockets with WaterGuard™ zippers
- License tab
- Drawcord bottom
- Stuffs into included bag
- Available in Mossy Oak® New Break-Up® or Loden coloured
- Dry-Lite™ Jacket and Pant weigh a combined 1.2 Lbs,
- Sizes S-3XL

30467114•• - Mobu
30467140•• - Green

DRY-LITE™ PANT

- High-density tricot with Pre-vent waterproof, breathable fabric
- Zip-to-knee elasticised cuffs with WaterGuard™ waterproof zippers
- Elasticised waist with drawcord and belt loops
- One rear security pocket with hook and loop closure
- Stuffs into included bag
- Available in Mossy Oak® New Break-Up® or Loden coloured
- Dry-Lite™ Jacket and Pant weigh a combined 1.2 Lbs
- Sizes S- 3XL

30267214•• - Mobu
30267240•• - Green

NEW
2005


DRYlite™

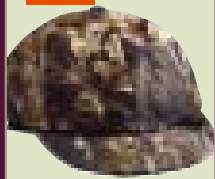


Hydro-Fleece®
Pro Series
Pant

Improved Hydro-Fleece® ProSeries fabric with **Gore-Tex® laminate for quiet, waterproof, windproof and breathable performance**

- Sizes : S-3XL
 - Mossy Oak® Break-Up™
- 30263814 ••**

- 1.- Tekna-Fleece lining
- 2.- Side-seam leg zippers extend to the knee
- 3.- Zippered fly
- 4.- Fully constructed waistband with kidney flap (back higher)
- 5.- Two cargo pockets, two front pockets and one rear pocket with quiet zipper pulls



Hydro-Fleece®
caps

- Hydro-Fleece™ fabric with Gore-Tex® inserts
- Adjustable Velcro® headband
- One size fits all
- Mossy Oak® Break-Up™

30892504



Hydro-Fleece®
Lightweight Glove

- Hydro-fleece shell with Gore-Tex fabric
- Improved no-slip palm
- Flex-grip knuckle seams
- Primaloft insulation
- Extended Lycra

- Sizes : S-XL
 - Mossy Oak® Break-Up™
- 30786414••**

Hydro-Fleece®
Pro Series 4-in-1 Parka

Shell : • Improved Hydro-Fleece® Pro Series fabric with **Gore-Tex® laminate for quiet, waterproof, windproof and breathable performance**

- Zippered rear pocket
- Drawcord waist

Liner : • New DuPont® Thermolite® Micro insulation for warmth without bulk

- Sizes : S-3XL
 - Mossy Oak® Break-Up™
- 30363314••**



New
2005



Belvaux shirt
100% Cotton
• Plain Olive colour
• Sizes : M-2XL
30150838..

7

- 1.- Detachable, insulated, height adjustable hood
- 2.- Two zippered bellows pockets plus inside security pocket
- 3.- Underarm gusset and articulated elbow
- 4.- Adjustable Lycro® cuffs
- 5.- Quiet, direct-attach zipper pulls.
- 6.- Liner : Camo fleece reserves to olive-colour tadel nylon
- 7.- Elasticised bottom and knit cuffs
- 8.- Two slash pockets on each side
- 9.- Grip strips on shoulders

OUTDOOR



Ardennes Hydro-Fleece Parka

Hydro-Fleece fabric is a **waterproof, windproof & breathable**

- Utilising Gore-Tex laminate for quiet
- Thermore insulation for warmth without bulk • Detachable insulated hood • Tekna-fleece lining
- 2 lower slash pockets and 1 inside security pocket • Full-length YKK zipper with flap • Velcro adjustable Lycra cuffs inside sleeves • Drawcord waist
- Game bag
- Sizes : S-3XL
- Green

30353638..



New
2005

Tasche pullover

100% bonded polyester fleece for great wind resistance • Quarter zip front • Stand-up collar • Oversized kangaroo pocket on front with zip closure • Embroidered pocket flap • Zip close handwarmer pockets

- Drawcord bottom
- Sizes : M-2XL

Limited quantity

- Spruce (Olive green) 30442747..
- Black 30442790..



New
2005



St Hubert Parka

- Lightwax parafine coated fabric
- Waterproof, windproof, breathable
- Two large hunting pockets + handwarmer pocket on each side
 - One side pocket with zipper
 - One inside chest pocket with zipper
 - Drawcord on waist
 - Drawcord on bottom
 - Two zippered large pockets in chest
 - Detachable hood with velcro band to better view, roll in hood
 - Fluo band included
- Olive
- Sizes : S-2XL

30320638••



Fluo band included

Hunting gloves Middle

- Green
- Made of polyurethane and Nylon
- Windstopper®
- S-2XL

30720539••



Hunting gloves Double

- Green
- Made of Windstopper®
- S-2XL

30720239••



Hunting gloves Cold

- Green
- Gloves/Mitten
- Made of Windstopper®
- S-2XL

30720339••



Rochefort quilted Jacket

- Water repellent
- Windproof
- Lightwax fabric
- Two large down pockets
- Two handwarmer pockets
- Nylon liner
- One inside chest pocket
- Sizes : S-3XL
- Olive

30420138••



Faune Pull over

- 70% Acrylic - 30% Wool
- Green
- Sizes : S-2XL

30150239..



Safety blaze overlay vest

- 100% Polyester oxford • Zip front • Back license loop
- Large snap flap shell pockets • Buckmark embroidery on front and back
- Blaze
- Sizes : S-3XL

30510001••

OUTDOOR

NEW
2005



Black

30521150•• right-handed

30521050•• left-handed

Green

30550139•• right-handed



Master Plus Shooting Vest

- Tailored and engineered for complete freedom of movement with ultimate functionality
- A large water resistant leather patch for easy mounting
- With Reactar™ pad pocket so you can add a Reactar™ pad for maximum recoil protection and comfort when shooting
- Integral vest expander for additional size flexibility
- Large shell pockets
- Available in black, red and green
- Sizes: S-XXXL



Black /Red

30500290•• right-handed

30500390•• left-handed

Loden/Beige

30500240•• right-handed

30500340•• left-handed



Mens Deluxe Shooting Vest

- Twill full-length shooting patch
- Mesh body for ventilation
- Two-way front zipper
- 4 large front shell pockets
- Bartacs at all stress points
- Side tab adjustments
- Large back pocket for empties or other gear
- Built-in REACTAR™ pad system (REACTAR™ not included)
- Right-hand or Left-hand
- Sizes: M-XXXL

Reactar

NEW IMPROVED REACTAR SHOOTING PAD

Browning's exclusive, new and improved REACTAR pad (Recoil Action Arrestor) absorbs recoil on the inside of vest, jacket or shirt without altering appearance or increasing length of pull • Only 8.5 mm thick • Lightweight • Flexible to form to your body • Uses patented Beta Gel which reduces peak recoil up to **49%**. Pocket not included. White

3090002

309012 (WSL)



Clay Shooting Vest

- Twill full-length shooting patch
- Mesh body for ventilation
- Two-way front zipper
- 4 large front shell pockets
- Side tab adjustments
- Large back pocket for empties or other gear
- Built-in REACTAR™ pad pocket (REACTAR™ not included)
- Large clay logo embroidery on back/shoulder
- Right-hand
- Sizes: S-3XL

Black/Orange Clay logo

30521290••



Toe Rest

- You can use this accessory to let the barrels of your gun lie on the top of your shoes.
- Real leather 100%

218511 - Black





8 8 - 8 9



Crew short sleeve shirt with shooting patch

- 100% ring spun cotton
- Quilted shooting patch
- Screen printed shooting design
- S-2XL
- White/Claymaster

30102547••

- Grey/Stars & Strips

30102449••



Caps

- Adjustable
- One size fits all
- 100% cotton



• Twill Prim Brim
308480401



• Twill Prim Brim
308480901



• Camo 3D Buck Cordura
308479141



• 2 Tone Eur Solid
308205991



• Security Fluo
3082021

OUTDOOR



T-Shirt Dust' Em

- 100% cotton heavyweight fabric
 - Sizes= M-2XL • Grey • Logo on back
- 30134992••**



T-Shirt Muddy Dog

- 100% cotton heavyweight fabric
 - Sizes= M-XL • Blue
- 30137149••**



T-Shirt Duck Photo

- 100% cotton heavyweight fabric
 - Sizes= M-2XL • Green
- 30137142••**



T-Shirt Flying Duck

- 100% heavy cotton
 - Sizes= M-2XL • Blue
- 30136262••**



Polo Euro Pique
• 100% Cotton

Logo :
Embroidered or
button-hole label

- Green - S-2XL
30126539••
- Navy - M-2XL
30126545••
- Black - S-2XL
30126590••

CYNERGY Cap

- One size fits all
- 100% cotton
- Black/Yellow

3082111



Clay master black

- Adjustable
- One size fits all
- 100% cotton Twill

308001901

T-Shirt Billboard Flag L/S

- 100% cotton heavyweight fabric
- Long sleeves (L/S)
- Sizes = M-2XL

30131470••



T Shirt Billboard Camo Cactus

- 100% cotton heavyweight fabric
- Sizes= S-2XL
- Green

30137042••



• Micro Fibre
Security Fluo
308214



• Chrome
• Chromed colour logo
308221



• Rainbow
• Rubber logo
308220



• Pen Buck 2 Tone
308217 Grey/Tan
308218 Petrol Blue/Tan



• Gum
• Gum logo
308219



• Style Buck 2 Tone
308215 Dark Blue/Tan
308216 Dark Green/Tan



Investor Key (+)
Black/Gold • Cal 12
113116

Extra Long 5 cm Extra Long 10 cm
Investor+ Cal 12 Investor+
Cal 12



Midas

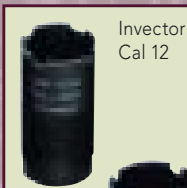
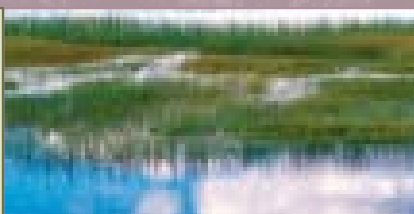


Diamond Chokes

Flex foam choke tube

Waterproof, model foam is lightweight and comfortable
Available in Mossy Oak Break up on request
Hold extended choke tubes and Little skeeters/Double belt loop

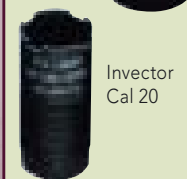
Black: **12170**



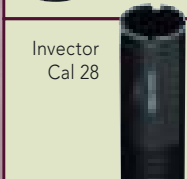
Investor
Cal 12



Investor+
Cal 12



Investor
Cal 20



Investor
Cal 28



Investor
Cal 410

CHOKE KEY

T wrench 12	5201100
T wrench 12 +	5120001
T wrench 28	1130016
T wrench . 410	1130017
Wrench 20 & 20 +	62200T

INVECTOR CHOKE

Calibre 10

X-Full Turkey	5920700
F (1/1)	59201
M (1/2)	59203
IC (1/4)	59204

Calibre 12

X-Full	5120700
F (1/1)	5120100
IM (3/4)	5120200
M (1/2)	5120300
IC (1/4)	5120400
Sk.	5120500
Cyl.	5120600

Calibre 12 Plus

Full Long. 10cm (1/1)	16656
Full Long. 5cm (1/1)	16650
Full Long. 5cm (3/4)	16651
X-Full	6120700
F (1/1)	6120100
IM (3/4)	6120200
M (1/2)	6120300
IC (1/4)	6120400
Sk.	6120500
Cyl.	6120600

Calibre 20

F (1/1)	5220100
IM (3/4)	5220200
M (1/2)	5220300
IC (1/4)	5220400
Sk.	5220500
Cyl.	5220600

Calibre 20 Plus

F (1/1)	5221011
M (1/2)	5221012
IC (1/4)	5221013
Sk.	5221014
Cyl.	5221015

Calibre 28

F (1/1)	1130256
M (1/2)	1130276
IC (1/4)	5221113
Sk.	1130296
Cyl.	5221115

Calibre 410

F (1/1)	1130257
IC (1/4)	1130287
Sk.	1130297

Investor Plus

Rifle deer 12 Calibre	1130863
-----------------------	---------

MIDAS

Calibre 12 Plus / Calibre 20

Extra Full Trap	1130123
Full (1/1)	1130153 / 1130653
IM (3/4)	1130163 / 1130663
M (1/2)	1130173 / 1130673
LM (1/2 improved)	1130133
IC (1/4)	1130183 / 1130683
Skeet	1130193 / 1130693
Cyl.	1130113
Spreader (dispersant)	1130103

DIAMOND Cal. 12 NEW

X-full	BOOBW10806
F (1/1)	BOOBW10805
IM (3/4)	BOOBW10804
M (1/2)	BOOBW10804
IC (1/4)	BOOBW10802
Sk.	BOOBW10801
Cyl.	BOOBW10800



Choke Key



Midas Cal 12 and Cal 20



Choke Tube Case

1210120

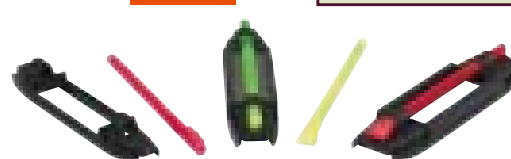
Hi-Viz Comp Sights

The Browning HI-VIZ® Comp-Sight has a metal base that threads directly into the bead-hole on your shotgun for a more permanent sight picture

- Interchangeable light pipes allow the shooter to match light pipe diameter and colour to the shooting conditions
- The new HI-VIZ® Comp-Sight permits proper «barrel-management», enabling the shooter to know exactly where the barrel is in relation to the target.



12850



Hi-Viz Bird Buster magnetic shotgun sights

All Browning HiViz Bird Buster magnetic sights come with four interchangeable LitePipes of different diameters for different light conditions * Includes three different sizes magnetic bases to fit the rib on any shotgun * Fits all BROWNING Shotguns

12859

OUTDOOR



Hearing Protection Deluxe
Comfortable, extra-wide padded headband
• Adjustable stainless steel wires
• NRR 22 dB
12632 - Black



Featherlight Shooting Glasses

- Crystal clear, polycarbonate lenses with tint combinations: bronze, vermillion, orange, transparent
- Non-slip nose and ear
- Removable centre piece preventing fogging
- Maximum eye protection

12708



Polarlight ultra-light shooting glasses

- Interchangeable vermillion, grey and polarized sandstone coloured lenses • Great for shooting or fishing
- Lightweight, wrap-around Hydralon™ frames • Thermo Grip™ nose and temple pads • Padded case included.

12711



Hearing Protection US Electronic

- Electronically eliminates all unwanted sound.
- Enhances weaker sounds normally not audible when wearing hearing protection.
- NRR 19dB

12639 - Black



Profile Passive Ear Protection

The passive Protection offers many of the same design characteristics

- Noise attenuation is approximately 24 dB
- They may be comfortably worn with glasses, are lightweight and feature padded seals and a cushioned headband

12649 - Black

Profile Electronic Ear Protection

- The electronic model features a low frequency "lift", which enables the shooter to hear more bass detail whilst at the same time the treble response is gently rolled off, eliminating distracting and unwanted high-pitch sounds
 - When shooting, sound below the 75 dB safe level is heard normally
 - As the gun is fired, this threshold is exceeded and the sound output is cut to zero but quickly returns back to normal.
- With charger 220-230-240 V:

12648 - Black 220 - **12642** - 220 Green

12641 - Black 240 UK - **12643** - Green 240 UK

Charger Ear Protection 2 Pins plug • **12645**

Charger Ear Protection 3 Pins plug • **12662**



Shooting gloves Cabretta

- made of leather
- Black

30700590•• - S-XXL



Shooting gloves Comfort

- Made of Polyurethane and Bielastic mesh.
- Black

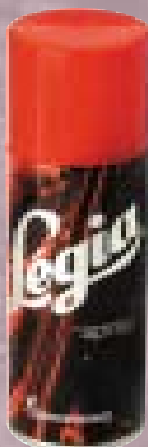
30720190•• - S-XXL



Shooting gloves Feuillant

- Made of Nubuck 100% and Thinsulate Thermae Insulation
- Brown

30720031•• - S-XXL



Standard
200ml
12426



Stockcare
200ml
12427 -



Longlife
200ml
12428 -

Browning Special Care Products

Our gas-free pump-action system and the adherence of our low volatility oils, make the LEGIA SPRAY 25% more efficient than traditional gun oils.

- LEGIA SPRAY Standard (Red): cleaning oil for barrels and receivers: excellent for maintenance and protection.
- LEGIA SPRAY Stockcare (Green): the ideal product for protecting and maintaining precious woods. Nourishes and increases the impermeability of all «oil rubbed» finishes.
- LEGIA SPRAY Longlife (Grey): Low volatility oil. The oil film remains on the gun longer, making it the ideal product for use in extreme conditions (salty, damp, etc.)



Barrel-cleaning kit

The Browning Barrel Weasel™ is a simple tool that thoroughly and effectively cleans your rifles and shotguns in about ten seconds. Bronze bristles, embedded in the nylon cord, loosen deposits while the cord itself wipes away deposits in a way cleaning patches can't equal. Constructed from durable nylon cord, the Barrel Weasel is washable and reusable for many years.

12410 - Cal 22

12411 - Cal 270/7mm

12413 - Cal 300/3006/308

12414 - Cal 20

12415 - Cal 12



12 or 24 Pack Dome Cooler

- 600 Denier Polyester coated with heavy-duty polyurethane
- Heavy-gauge vinyl lining
- Leakproof, electronically welded liner
- Heavy-duty self-repairing nylon zippers
- Durable nylon web straps
- Open-cell foam construction provides protection for canned beverages or even a video camera
- Mossy Oak Break-Up™ camo
- Three sizes to choose from, including a model that converts to a backpack.

121796 - 12 pack

121797 - 24 pack



Gun-cleaning mat

The safe way to protect both firearms and furniture. The soft, felt-like fabric won't damage firearms and has a **waterproof Zorb Tech™** backing. Zorb Tech stops spills from spreading and inhibits the soak through of cleaners. **The mat is also washable, dryable and highly stain resistant.**

40,64 x 137,16 cm

12420 - Black

SOFT-SIDE COOLERS



Back Pack Cooler

- One bag: 2 ways of using

121795



Fowl Gear™ Blind Bag

- Durable, coated nylon outer in Mossy Oak Break Up™
- Water-stay line and zippered storm flap provide a water resistant interior
- Both bags have closed-cell foam construction that make them buoyant
- Call pockets and a zippered dry pocket for extra water protection
- Guide model will float, even with 10 boxes of 12 gauge 3" shells
- Outside shell loops provide quick access to alternate loads.

12171

OUTDOOR

Midas Canvas Gunslip

- Shell : 22 oz. Canvas
- Lining : Flannel
- Padding type: Quilted flannel
- Zipper: Snap Closure
- Trim and Binding: Canvas
- Green

141999152 - 132 cm regular Green

Buck Mark Rifle

Gunslip

600D polyester

- Green
- Zipper padlock included

1410036 - 92 cm regular

GreenBuck Mark Rifle

Deluxe Canvas Gunslips

- Shell : Cotton Ducko Lining : Sherpa Pile
- Padding type: Open Cell Foam Zipper: # 5 Nylon
- Trim and Binding: Expanded Vinyl
- Green

141220152 - 132 cm regular Green

141220248 - 122 cm scope Green

Gunslip Clay Logo

- Black/Fluo logo

149217 For 71 cm Barrel length

149221 From 76 to 81 cm Barrel length

X-Cellerator braces support

- Easily adjustable slip-lock buckle.
- Can be positioned as shoulder or backpack sling.
- Wide range of adjustments.
- Super swivels included.
- Width 3.2 cm



Suits all Browning rifles

122302025 - Black

122301425 - Beige

122300125 - MoBu

Suitable for BPS Cal 12/20
A5 and Gold Cal 12/20

122302029 - Black

122300129 - MoBu

Standard Canvas Gunslips

Shell :

- Cotton Canvas
- Lining: Brushed Nylon knitted fabric
- Padding type: Tuff

Pad :

- Zipper: # 5 Nylon
- Trim and Binding: Expanded Vinyl
- Green, Tan, MoBu

141202150 - 127 cm regular Beige

141202152 - 132 cm regular Beige

141205152 - 132 cm regular Green

141221150 - 127 cm regular MoBu

141221152 - 132 cm regular MoBu

(MoBu = Mossy Oak Breakup)

X-Cellerator Plus™ Slings W/ Cartridge Loop

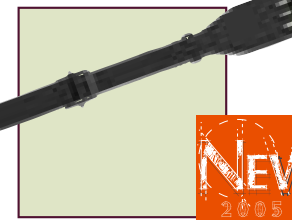
Fits all Browning rifles

- Three cartridge loops on the shoulder pad keep additional ammunition readily available

122302325

- The padded shoulder strap provides unbelievable comfort
- Easy adjusting, slip-lock buckle
- Includes nylon swivels
- Select either black or Mossy Oak® Break up®

122310325





Carry case (leather/canvas range)

- Thick leather handle, leather corner reinforcement
- Interior lined in soft fabric marked with the Browning logo.
- Removable spacers according to the length of the barrels (66cm to 81cm)
- 2 combination locks plus 2 leather closing straps

142610 - Beige



Carry case (leather range)

- Very high quality hand-made 100% leather carry case for exceptional guns.
- Thick leather handle, leather corner reinforcement
- 2 combination locks plus 2 leather closing straps
- Wooden base
- Removable spacers according to the length of the barrels (66cm to 81cm).
- Natural

142410

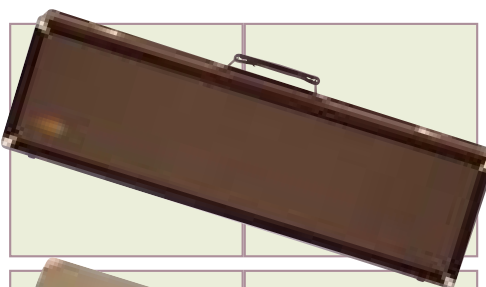
9 4 - 9 5

European Collector's Series Cases

The 1.000 denier Cordura fabric exterior is highly resistant to abrasion and scuffing. A special compartment is provided for Invector choke tubes. The case is provided with corner reinforcement and combination locks.

- For 76 cm shotguns only
- Beige

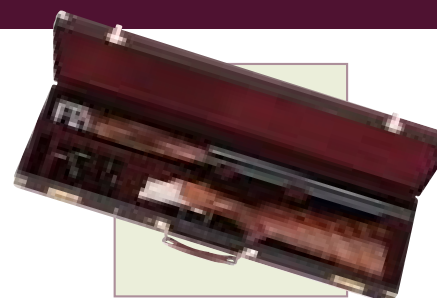
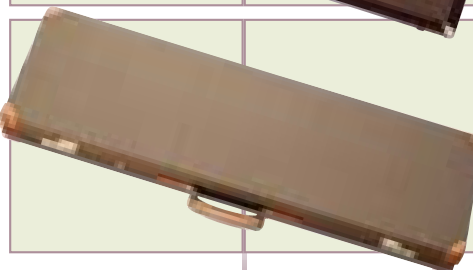
142760



Canvas case

- Canvas exterior accentuated by rich leather corners, thick leather handle and leather Browning logo.
 - Fits barrel lengths from 66 cm - 81 cm
- Two brass combination lock keep your gun secure.
 - Short nap wool interior

142510



Dura-Wax Series case

- Very resistant to abrasion and scuffing
- Browning Dura-Wax will also protect your gun against bad weather and knocks.
- Gun positioning blocks hold your gun securely in place.
- For 76 cm shotguns barrel length
- Green

142720

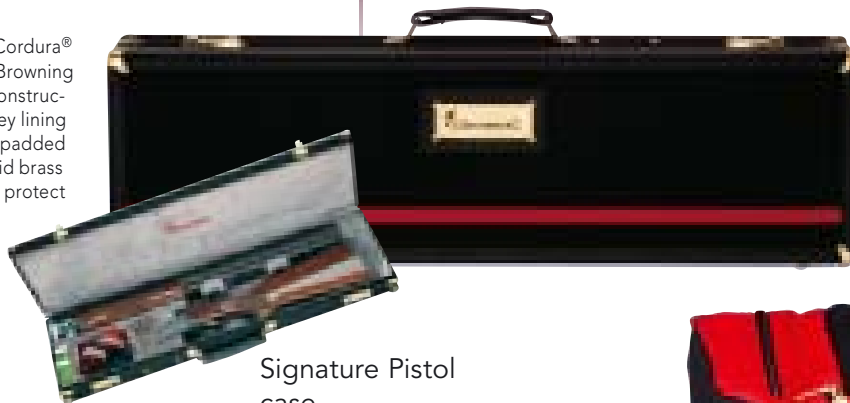


OUTDOOR

Signature Case

- Handsome black 1000 Denier Cordura® exterior with red trim and brass Browning signature
- Solid wood frame construction
- Soft, protective, plush grey lining on all interior surfaces including padded blocks to secure your gun
- Solid brass combination locks and hardware protect the corners.
- Black/Red

142730



Shell Carrier

- Holds four boxes of shells in centre compartment
- Two roomy zippered pockets for shooting accessories
- Reinforced for strength and to allow the carrier to stand up on its own.
- Black/Red

12141

Signature One Box Carrier

- Holds one box of shells
- Constructed of Cordura®
- Black/Red

12150

Signature Pistol case

- Pistols up to 16"
- Shell: 1200 denier polyester
- Lining - Corduroy
- Padding type: dual tech foam
- Zipper 7 delrin
- Trim & binding: 1200 Denier Polyester
- Zipper padlock included
- Black/Red

143401816



Signature Cargo Bags

- Tough nylon construction with shoulder straps
- Roomy water resistant vinyl-coated interiors
- Two end and one front zippered side-pockets with YKK® zippers.
- Black/Red

121311 - Small Cargo Bag

121312 - Medium Cargo Bag



12115

12116

Signature Shooting Bags

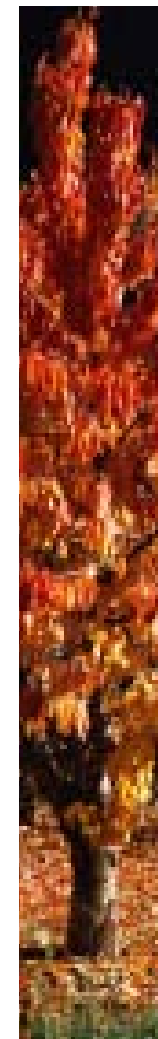
- 1000 Denier Cordura® outer with self-repairing zippers
- Reinforced lining
- Closed-cell foam for rigid shape
- Expandable shell bag holds empty shells and can be drawn tight with drawcords
- Padded carry handle and shoulder strap.
- Black/Red

Signature Gunslips

- Shell: • 1000 Denier Cordura®
- Lining : Corduroy
- Padding type: Dual-Tech foam
- Zipper: # 7 Delrin
- Trim and Binding: Cordura®
- Zipper padlock included
- Black/Red

141401150 - 76 cm barrel

141401152 - 81 cm barrel



Kodiak F.D.T.
 Blade 9,5 cm • Steel I N OX AUS 8A Teflon Coated
 Handle 12 cm • Zytel+rubber
 Weight 200 g
>Mod. 600 - 322600

Kodiak F.D.T. Drop Point
 Blade 9,5 cm • Steel I N OX AUS 8A Teflon Coated
 Handle 12 cm • Zytel+rubber
 Weight 125 g
>Mod. 608 - 322608

Wingshooter F.D.T.
 Blade 8,5 cm • Steel INOX AUS 8A Teflon Coated
 Handle 10,5 cm • Zytel+rubber

Weight 150 g
>Mod. 620 - 322620

Angler F.D.T.
 Blade 7,5 cm • Steel INOX AUS 8A Teflon Coated
 Handle 10,5 cm • Zytel+rubber
 Weight 150 g
>Mod. 630 - 322630

Kodiak MOBU
 Blade 9,5 cm • Steel I N OX AUS 8A Teflon Coated
 Handle 12 cm • Zytel+MOBU

Weight 150 g
>Mod. 645 - 322645

F.D.T. KNIFE COLLECTION



Weight 70 g
>Mod. 690 - 322690



Weight 150 g
>Mod. 691 - 322691



Weight 215 g
>Mod. 692 - 322692



All knives are delivered with sheath or box or blister pack



Extreme F.D.T.
 Blade 9 cm • Steel INOX 440C Teflon Coated
 Handle 11,5 cm • Rubber Coated Alu • MOBU

SILHOUETTE KNIFE COLLECTION



Buck Mark

Blade 11,5 cm • Steel INOX 440B Teflon Coated
 Handle 11,5 cm • Rubber Coated Alu • MOBU
 Weight 250 g
>Mod. 670 - 322670

Blade 11,5 cm • Steel INOX 440B Teflon Coated
 Handle 11,5 cm • Rubber Coated Alu • MOBU
 Weight 250 g
>Mod. 672 - 322672

Blade 12 cm • Steel INOX 440B Teflon Coated
 Handle 11,5 cm • Rubber Coated Alu • MOBU
 Weight 250 g
>Mod. 671 - 322671



SIGNATURE KNIFE COLLECTION

Blade 9 cm • Steel INOX AUS 8A (wsl)
Handle 11,5 cm • Zytel
Weight 110 g

>Mod. 709 - 322709



Blade 11 cm • Steel INOX AUS 8A (wsl)
Handle 13 cm • Zytel
Weight 125 g

>Mod. 708 - 322708



RED DEER KNIFE COLLECTION



Blade 8,5 cm • Steel I NOX 440A
Handle 11 cm • Real Stag

Weight 250 g

>Mod. 5004 - 322996

Weight 220 g

>Mod. 5003 - 322995



OUTDOOR

Long Trailing

Blade 10 cm • Steel INOX AU S-8A
Handle 12 cm • Zytel + Pakkawood

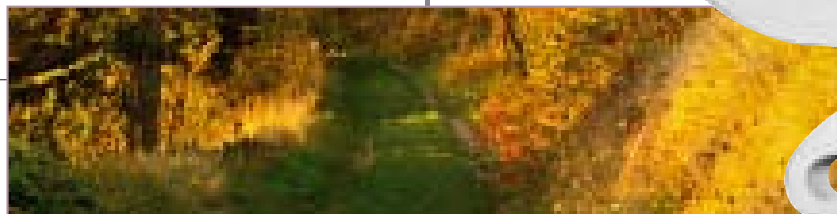
Medium Drop

Blade 8 cm • Steel INOX AU S-8A
Handle 10 cm • Zytel + Pakkawood

Medium Trail

Big Game

Blade 8,5 cm • Steel INOX AU S-8A
Handle 11,5 cm • Zytel + Pakkawood



FEATHERWEIGHT KNIFE COLLECTION



Weight 110 g

>Mod. 817 - 322817



Weight 75 g

>Mod. 825 - 322825



Weight 75 g

>Mod. 836 - 322836



Weight 150 g

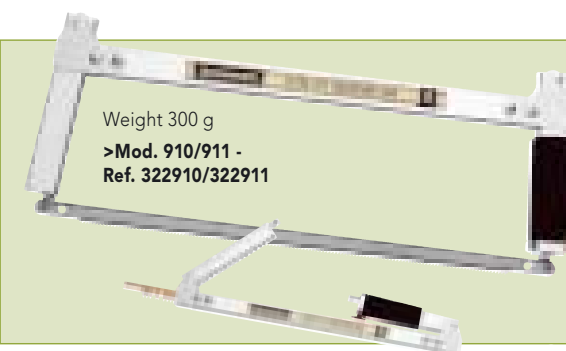
>Mod. 828 - 322828

Take-Down Saw

Blade 322910 38 cm • Wood and bone
Blade 322911 45 cm • Wood and bone
Handle 6061-T6 Alu. with foam grip

Folding Game & Camp saw

>Mod. 900 - 322900



Weight 300 g

>Mod. 910/911 -
Ref. 322910/322911

HAWK HUNTER KNIFE COLLECTION

Hunter Skinner



Blade 11 cm • Steel INOX 440B
Handle 11,5 cm • Real Stag
Weight 290 g

>Mod. 2608 CE - 322993

Weight 300 g

>Mod. 2608 WW - RX2608WW

Blade 11 cm • Steel INOX 440B
Handle 11,5 cm • Pakkawood
Weight 315 g

>Mod. 2608 - 322992

Blade 11,5 cm • Steel INOX 440B
Handle 11,5 cm • Cocobolo Macassar
wood
Weight 300 g

>Mod. 2608 W - RX2608W



DAGGER KNIFE COLLECTION

Solitaire
Blade 23 cm • Steel INOX 440
Handle 12,5 cm • Real Stag

Weight 500 g

>Mod. 119 - 322991

Hallali
Blade 23 cm • Steel INOX 440
Handle 12,5 cm • Real Stag

Weight 500 g

>Mod. 019 - 322990



125th ANNIVERSARY KNIFE COLLECTION

Limited edition

Handle Black G10 + Red Maple wood Weight
800 g

>Mod. 76 - 321076

Blade 8,5 cm • Steel INOX 440C Teflon
Coated • Handle 11,5 cm • Black G10
Weight 75 g

>Mod. 75 - 321075



VECTIS

THE MASTERY OF AIR



Vectis 026



Vectis 032



Vectis 220

MODEL	Vectis 026	Vectis 032	Vectis 220
BARREL	breaking	breaking	fixed
Length	47 cm	47 cm	46 cm
Calibre	4,5 mm	4,5 mm	4,5 mm
Rearsight	micrometric	micrometric	micrometric
STOCK (*)	beech	beech	beech
Finish	polished satin	polished satin	polished satin
Checkering	yes	yes	yes
Total Length	111 cm	114 cm	115,5 cm
TOTAL WEIGHT	3,15 kg	3,4 kg	4,22 kg
RECEIVER	rail 11 mm	rail 11 mm	rail 11 mm
SAFETY	non automatic	automatic	automatic
VO(*) SPEED	270 m/s	312 m/s	280 m/s

(*) According to local legislation

LEGIA PHOENIX

GAME CARTRIDGES

Legia Phoenix Semi-magnum 42g Ni



Legia Phoenix Classic 34g



Legia Phoenix Super 36g Ni



Légia Phoenix Classic	CBPXCL34P	12/70	22 Ni	34 g	wad	0-2-4-5-6-7	400	10
Légia Phoenix Super	CBPXU36P	12/70	22 Ni	36 g Ni	wad	0-2-4-5-6-7	400	10
Légia Phoenix Semi magnum	CBPXS42P	12/70	22 Ni	42 g Ni	wad	0-2-4-5-6	390	10
Légia Phoenix Brenneke	CBPXBK12	12/67	22 Ni	31,5 g (486 gr)	-	Brenneke	445	10

B Y B R O W N I N G

Browning International s.a.

Parc Industriel des Hauts-Sarts
3^{ème} avenue, 25
B-4040 Herstal - BELGIUM
Fax: +32 (0)4 240 52 12
www.browningint.com

RZBCAT05GB :
2€

GB



BROWNING
The Best There Is

Fusion Evolve II

